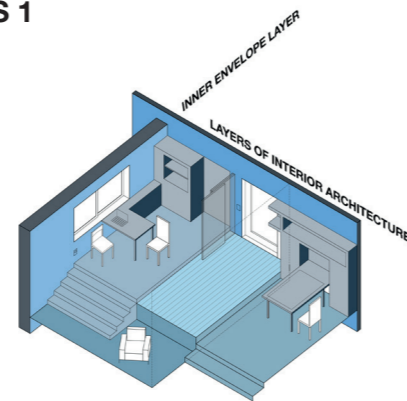


INTRODUCTION

In recent years, there has been an increasing interest in the development of interior domestic working spaces. During COVID-19 architects and designers were facing the understanding of the fast transformation of work practices of people. During the pandemic, people had to adapt their domestic spaces in response to the situation, meanwhile, office spaces were kept emptied or they were transformed into shelters for Covid patients. One of the main obstacles at that time was the lack of space in homes, the household density complexity, and the capacity of domestic spaces and furnishings to hold this transformation. This situation has made analyse some designers about the relationship be-

tween furniture architecture and its users. Layers of interior architecture assess the significance of the relationship between architecture and furniture, how is the articulation of these two elements in the interior space and how is the furniture's relationship with the inhabitants. This thesis examines and reveals the way in which the built-in furniture can be integrated into the interior envelope and architectural structure which it contains. It is possible for this skin to become singular once, the architect provides a particular function with the incorporation of special features having a domestic identity.

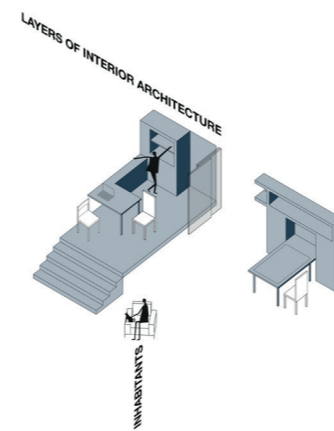
THESIS 1



The spatial interconnection between built-in furniture and architecture must be fluent and organic. The relationship between layers of interior architecture and the inner envelope is symbiotic, organic, and articulate.

The built-in pieces play a fundamental role in interior architecture; it renounces the quality of mobility. It blends into the space providing functionality and identity. They create a unique link with the space they inhabit as a genius loci of the interior space.

THESIS 2

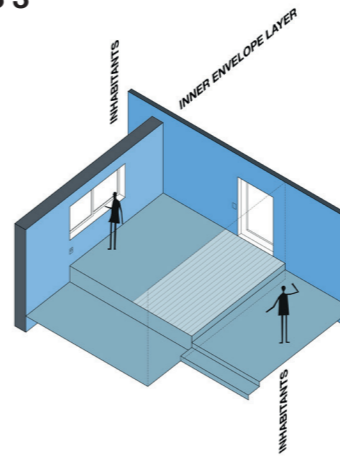


The influence of the inner layers of architecture on inhabitants contributes to the conformation of their habitat and well-being. The layers of interior architecture seek to satisfy the inhabitant's needs, provide comfort, help the conformation of their habitat and develop the people's well-being. On several occasions provide a surprise factor and functional contingency that enlivens the use and enjoyment of its users.

The thesis has provided a deeper insight into the interior envelope analyses through the different built-in furniture designed by the author and its close relationship with individuals. This piece is not just related to the physical space and its surrounding; it provides a singular connection and interior space assessment. It differs from mobile furniture in that, although it contributes to the conformation of the habitat, it does not reach a degree of solidarity with it.

Correctly choosing materials, colors, functions, ergonomics, and shapes of the furnishings design can improve human behavior. The most significant reason is that it is the layer where humans are more related. Individuals have a direct connection with it. So, there are natural and indirect influences from the architectural elements to the humans.

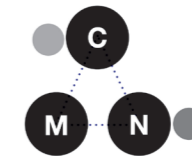
THESIS 3



Interior design must be symbiosis with its inhabitants, where the correct selection of materials of the envelope promotes well-being and comfort, allowing a fluid development of the activities.

The inner envelope is connected to the exterior facade of the building. It is the layer that links the exterior with the interior. Its design and resolution condition the spatial quality of the interior. Its permeability, in some cases more open and in others more closed, links the inhabitant to the exterior. This layer that is the border between two worlds, indoors and outdoors, regulates human mental and physical well-being, performances and relationships.

THESIS 4



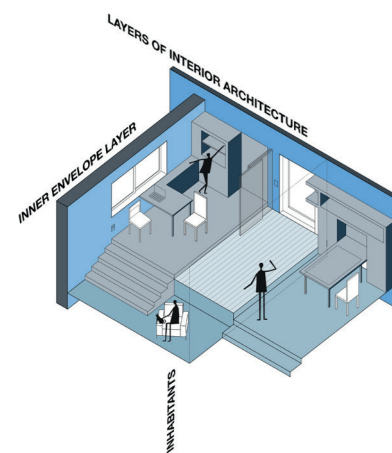
MCN - built-in furniture scheme is a valuable tool for classifying and understanding types of elements to be designed considering the client's needs and interior space configuration.

It can be suggested as a design approach the triadic MCN approach, where the main categories can be found in the triangle vertices: Metamorphosis, Creation of a world, and Nesting. However, some furniture devices can be located between extremes and share characteristics from both sides. For instance, it could realize the furniture is an MN (metamorphosis-nested) case, sharing both attributes.

CONCLUSION

This study has examined the relationship among built-in furniture, interior architecture, and its inhabitant. The research also shows through the analysis and development of five projects how important it is the resolution of these pieces from the beginning of the architectural project and the significant role these fit-ins can have in the inhabitant behaviours and psychological well-being.

Overall, this study strengthens the idea that this tripartite relationship between what the author has called: Layers of interior architecture, the inner envelope and the inhabitant through the projects presented.



LAYERS

OF INTERIOR

ARCHITECTURE

