

# PORTFOLIO

ZHANG QIAN



DESIGN & RESEARCH & TEACHING

2022-2017

**Zhang Qian**  
**DLA Portfolio**  
**Supervisor:**  
**Dr. Akos Hutter**  
**Full Professor**





**ZHANG QIAN**  
**ARCHITECTURE DLA**



# TABLE OF CONTENTS

## 01

### DESIGN PROJECTS

Project 1	--	09
Project 2	--	13
Project 3	--	17
Project 4	--	21
Project 5	--	25
Project 6	--	29
Project 7	--	35
Project 8	--	39
Project 9	--	49

## 02

### PUBLISHING & AWARDS

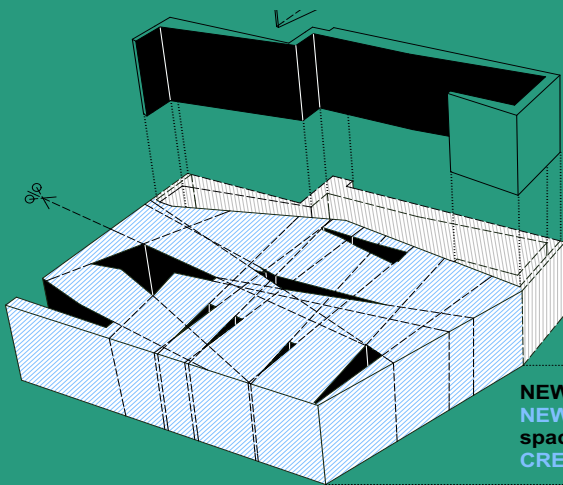
Publishing	--	54
Awards	--	56

## 03

### TEACHING PROGRAMS

Program 1	--	59
Program 2	--	67
Program 3	--	71





**FURNITURE**  
- showcase  
- shelves  
- store

**TRADITIONAL EXPERIENCE of SHOPPING and  
TRADITIONAL EXPERIENCE of SPACE**

**NEW EXPERIENCE of SHOPPING and  
NEW EXPERIENCE OF SPACE**  
space is carved and cut out from one volume  
**CREATIVE and INFLUENTIAL SPACE**

# PROJECT 1



PROJECT 1

## **Integrated Modular Wall Panel System Design**

Tengzhou, Shandong, China  
Spring 2022

**A** series of interior wall panels, including the modular system design of doors and small pieces of furniture. This is a customized interior-furnishing product designed for a Chinese manufacturer of finished doors and wall

**R**evolving around the concept of "Tangible Elegance", the project design presents three sensation aspects, showcasing "humanistic" in architectural detail forms.



Integrated  
Visible Aesthetic



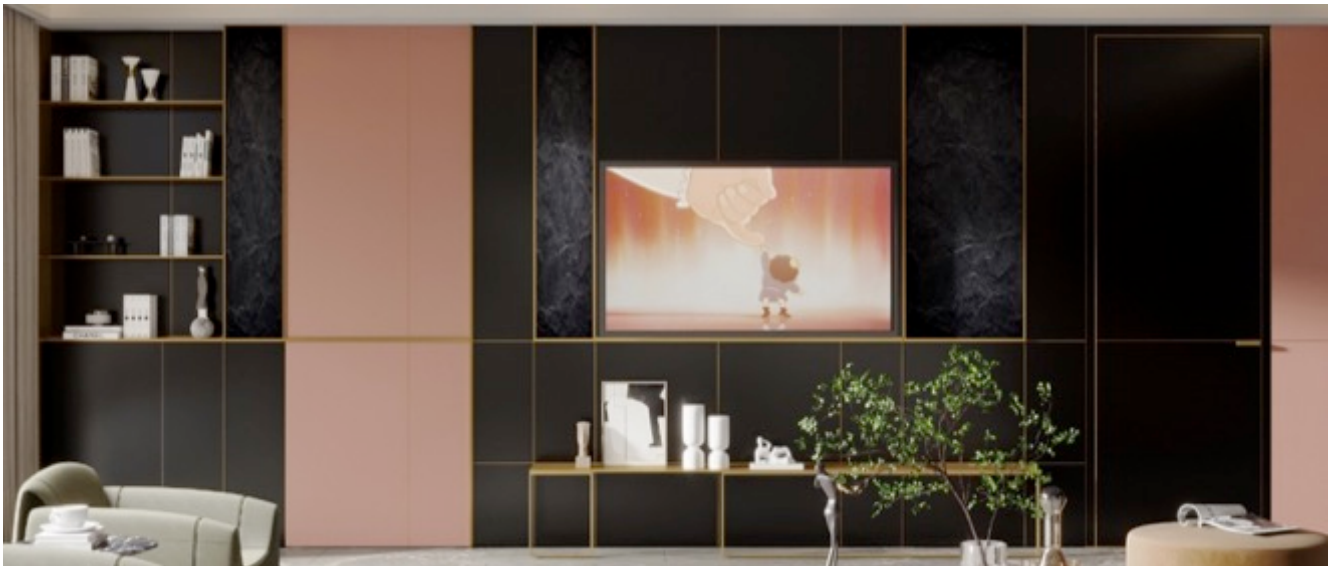
Contrasting textures  
Tangible

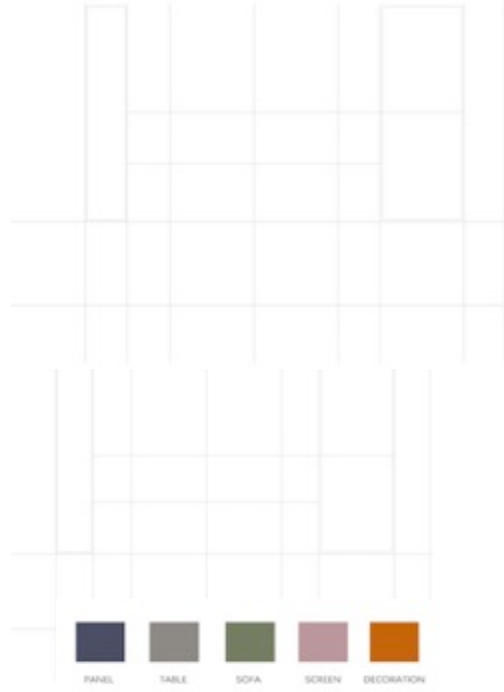


Fragmented crack  
Sensible



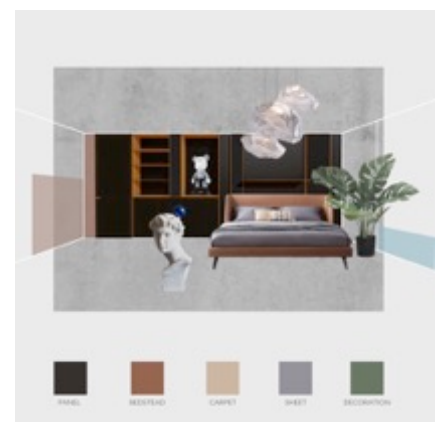
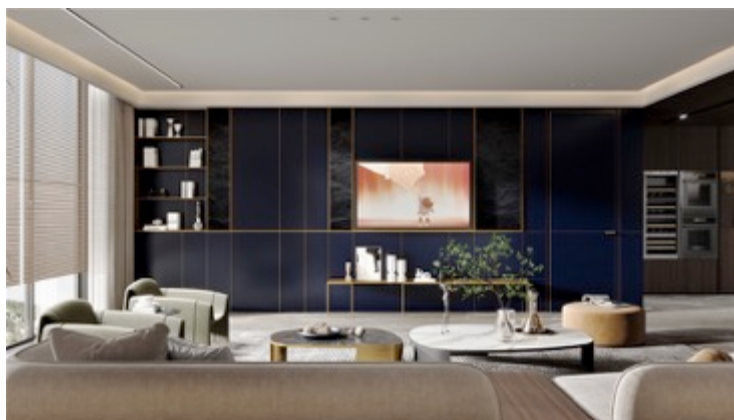
# TANGIBLE ELEGANCE





### Living Room and Dining Room

„Satin Ebony Black” wall panel surfaces with integrated rough hewn black slate components distinguished by bronze metal frames. Wall distribution is elaborated by integrated bronze metal lines. Living room desk and book shelves are also integrated wall elements produced by bronze metal.



# PROJECT 2





PROJECT 2

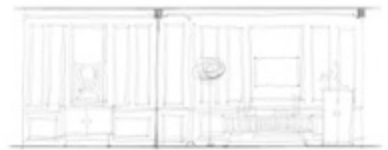
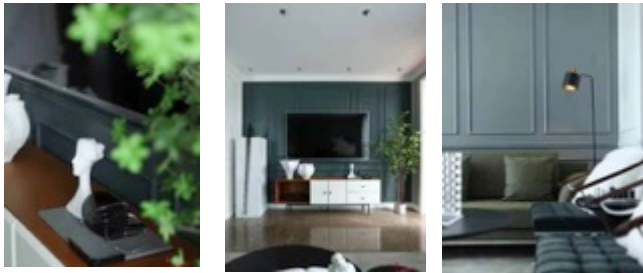
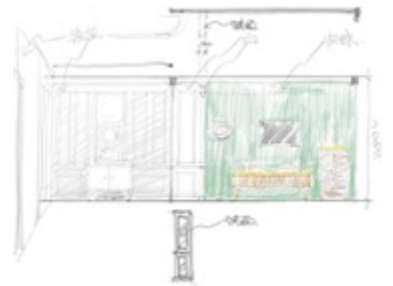
## Model Interior Design Of Town House

Fouzhou, Jiangxi, China

Spring 2020

**A** series of model apartment of a real estate company, I explored the philosophical thinking of humanistic design in the design of daily small-scale living space. This project is designed not only for potential residents in the future, but also as a commercial promotion and display of the whole real estate apartment products.

**T**hrough the creation of daily aesthetics and rich feeling details, we have completed the design and implementation of a series of attractive apartments.





# PROJECT 3



PROJECT 3

## Huilan Yoga Lifestyle Center Interior Design

Wuhan, Hubei, China

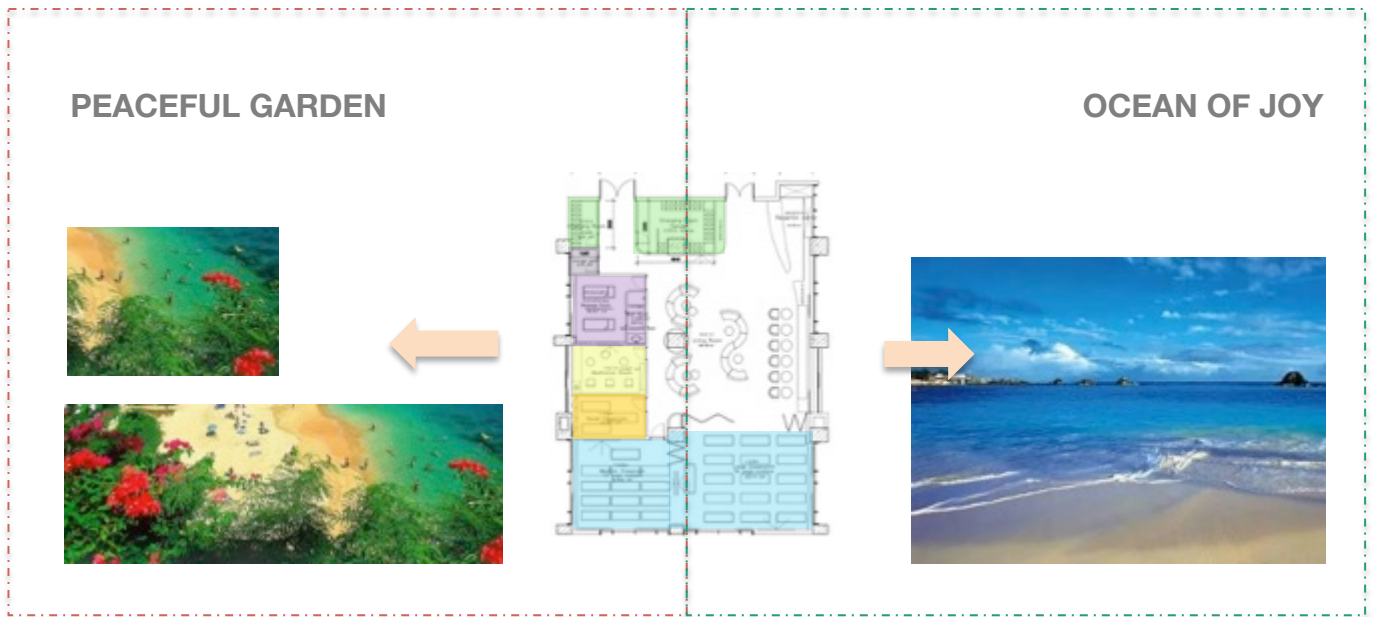
Spring 2019

**A**fter the design bidding, we won the yoga center design project of Huilan yoga. This is the first yoga health life center planned by this most influential yoga group in China. The client wants to have a bright and positive space with different functions, which can convey the healthy yoga lifestyle and happy Yoga spirit to their members.

**I**nspired by the client's requirements, we take "people" and "people's feelings" as the starting point of the design concept in this interior design project, creating a flowing, colorful and cheerful yoga world.



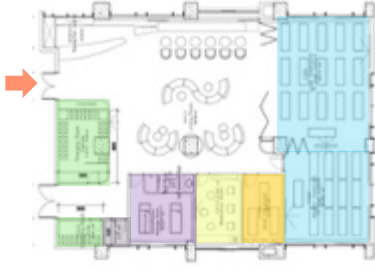
# HUILAN YOGA LIFESTYLE CENTER



The design conception is inspired by the beautiful nature of Hawaii. The abstract impressions of ocean and colorful vegetation are the inspiring images for the whole space---ocean of joy and peaceful garden. Ocean of joy implies the essence of the public space, it is open , flowing, pure and full of the waves of joy. The Living Room and service bar is the open public space. Peaceful garden implies the atmosphere of the functional areas---more private, healing, quiet and come with different colors. The classrooms, meditation room, massage room and change rooms are the more private spaces.



# HUILAN YOGA LIFESTYLE CENTER

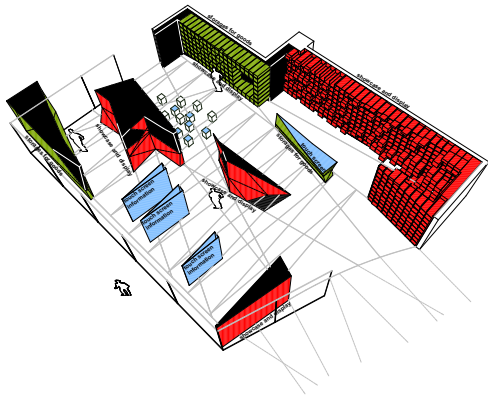


- 主入口  
ENTRANCE
- 客厅及吧台  
LIVING ROOM & BAR
- 瑜伽教室  
YOGA ROOM
- 瑜伽私教室  
PRIVATE YOGA ROOM
- 冥想室  
MEDITATION ROOM
- 按摩室  
MASSAGE ROOM
- 更衣室  
CHANGING ROOM
- 储物室  
STORAGE
- 安全出口  
EMERGENCY EXIT



# PROJECT 4





PROJECT 4

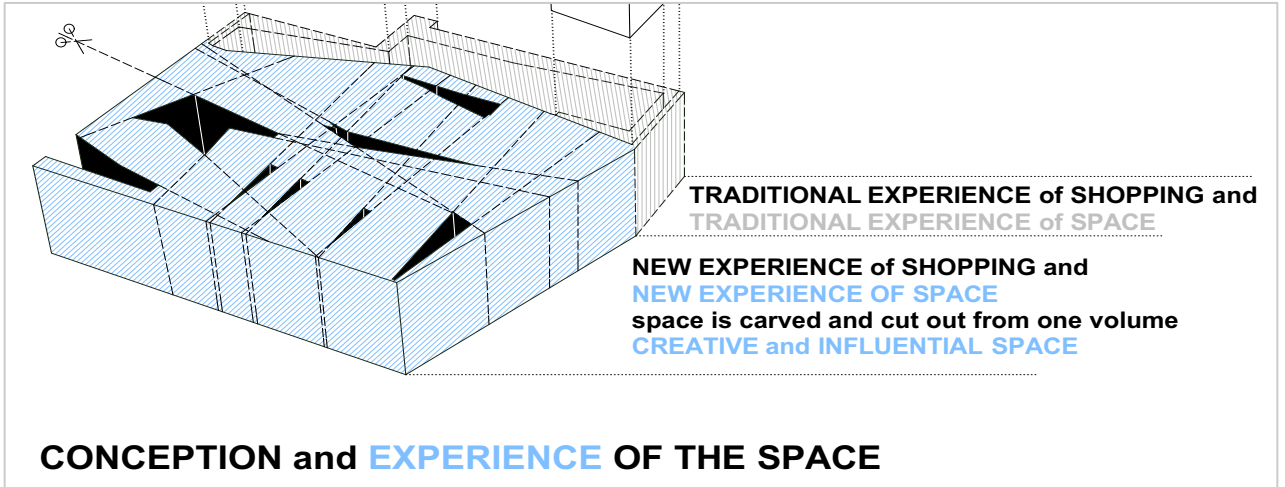
## InTime “The New Retail” Shop Interior Design

Hangzhou, Zhejiang, China

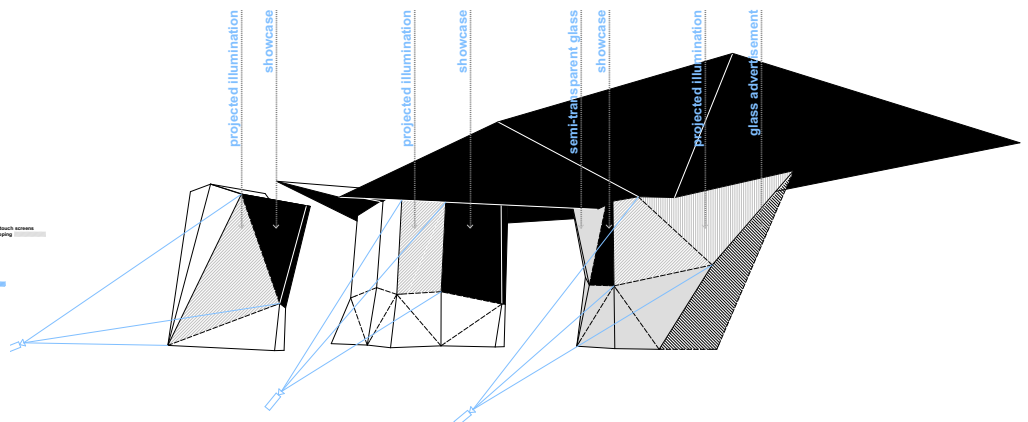
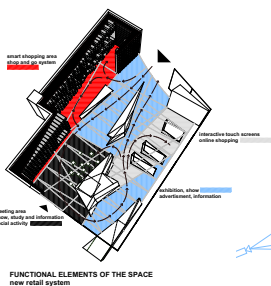
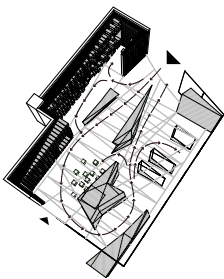
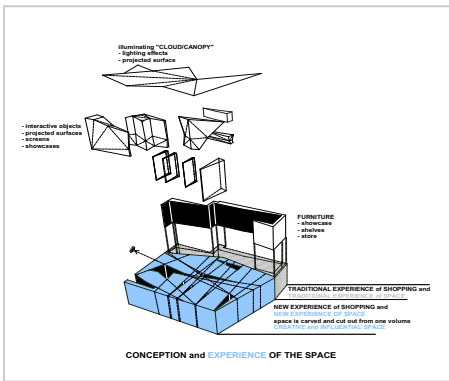
Autumn 2018

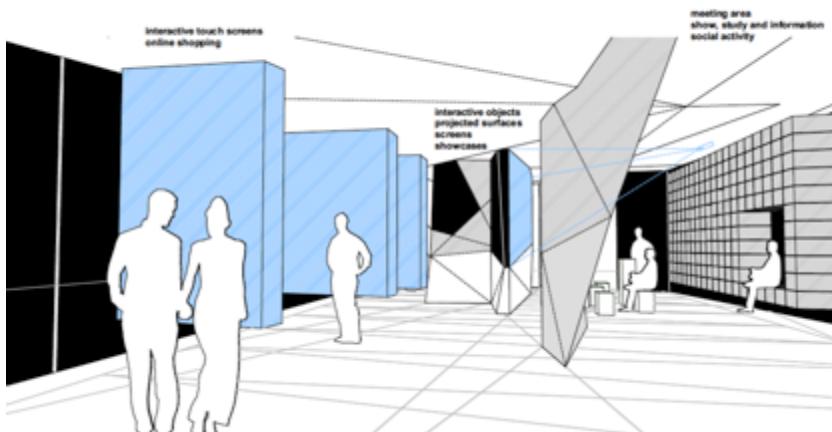
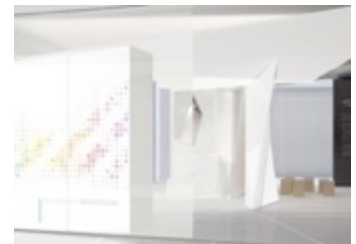
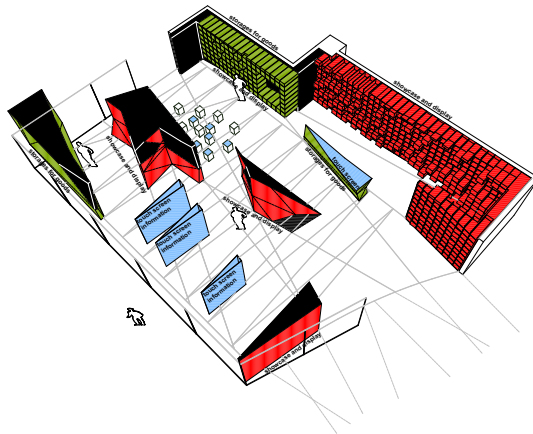
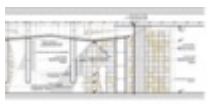
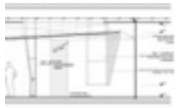
**W**e participated in “The New Retail” design competition of Intime department store, a national chain department store in China. We won the project, and the customer planned to realize it.

**B**ased on the sense of human’s experience and future shopping, This brand-new space container is designed as a composite of functional advantages of mobile shopping and the new special experience of traditional retail.



**NEW TECHNOLOGY ,NEW RETIL SYSTEM, NEW SPACE AND NEW EXPERIENCE**





# PROJECT 5



## PROJECT 5

### **Wuhan International Airport T3 Terminal Interior Design**

Wuhan, Hubei, China

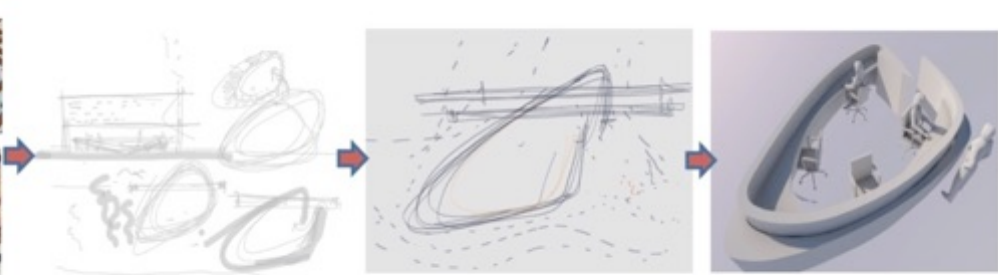
Summer 2018

**T**he customer hopes to create a new rest area for passengers in an open space next to the airport check-in area, and to present a experiential regional image.

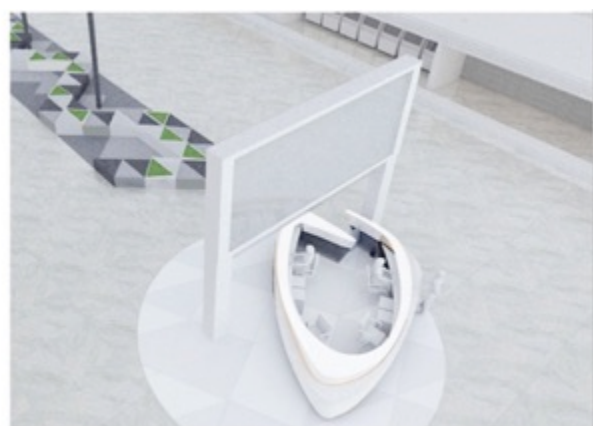
**T**he highlight of this design is that the traditional cultural background is integrated into the image of the modern airport. This contemporary design language brightens the whole area. Inspired by the triangular ceiling of the airport, and referring to the phoenix pattern of the ancient Chu culture in Wuhan, the information desk is smooth and free, and also presents the lightness and flexibility of modern aviation. The seats in the rest area of the white triangle unit symbolize the flexibility of the cloud dragon in the Chu culture. The white triangles with different heights also form different functions of plants, seats and decorative lighting.



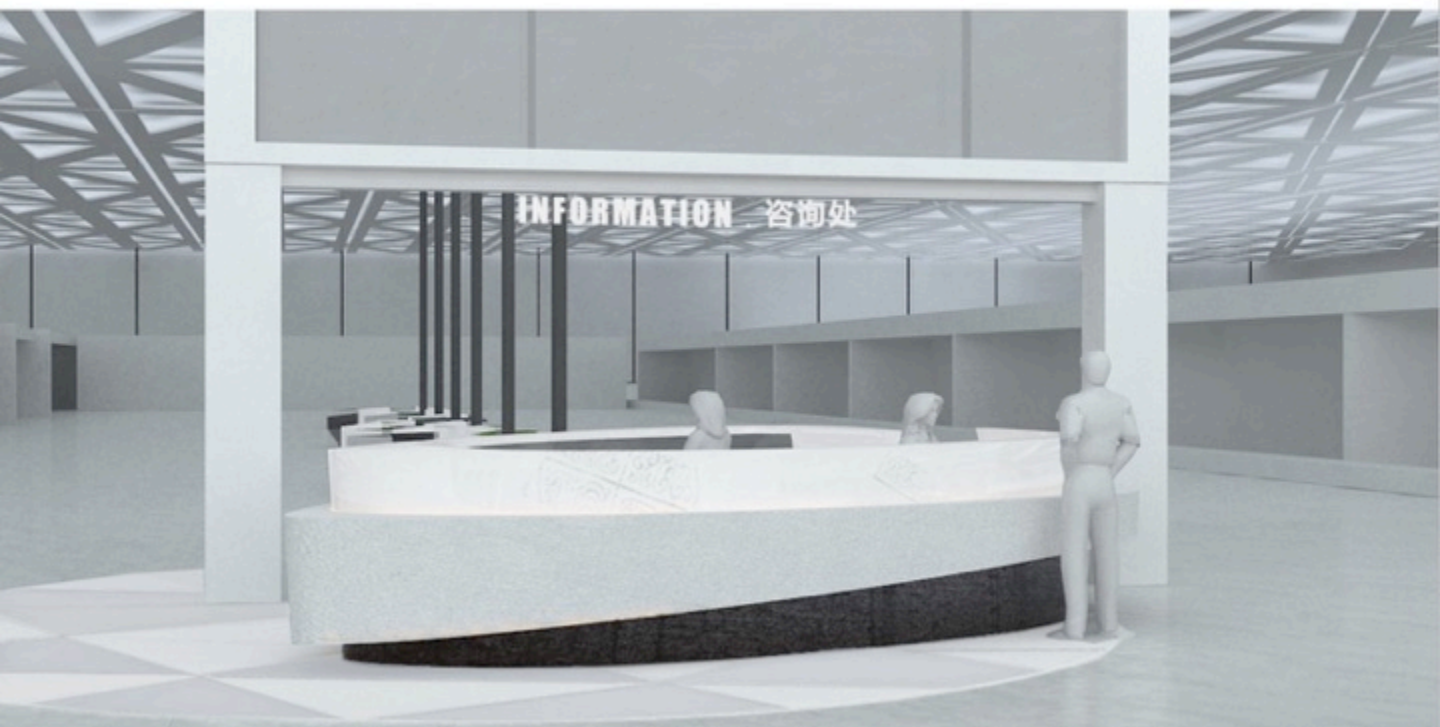
## CONCEPTION



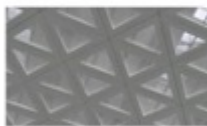
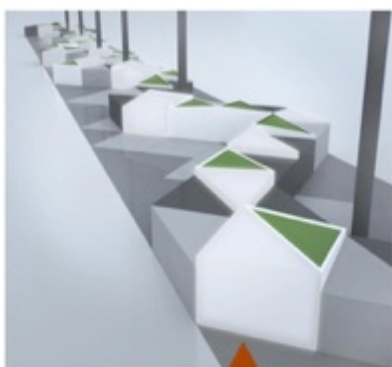
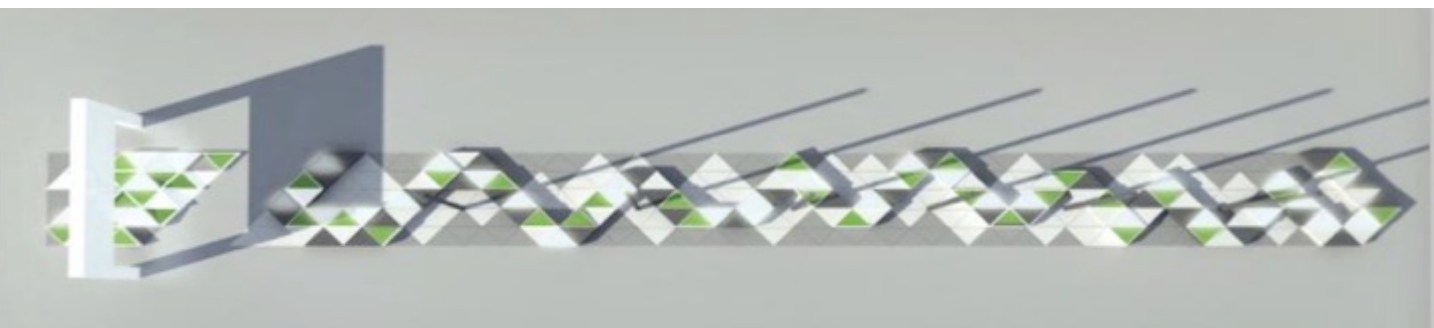
T3航站楼咨询台概念设计草图：流畅自由的形态，来楚文化的凤纹，也来自现代航空的轻盈与灵动



## AIRPORT INTERIOR DESIGN 机场航站楼室内设计



# Wuhan International Airport T3 Terminal Interior Design

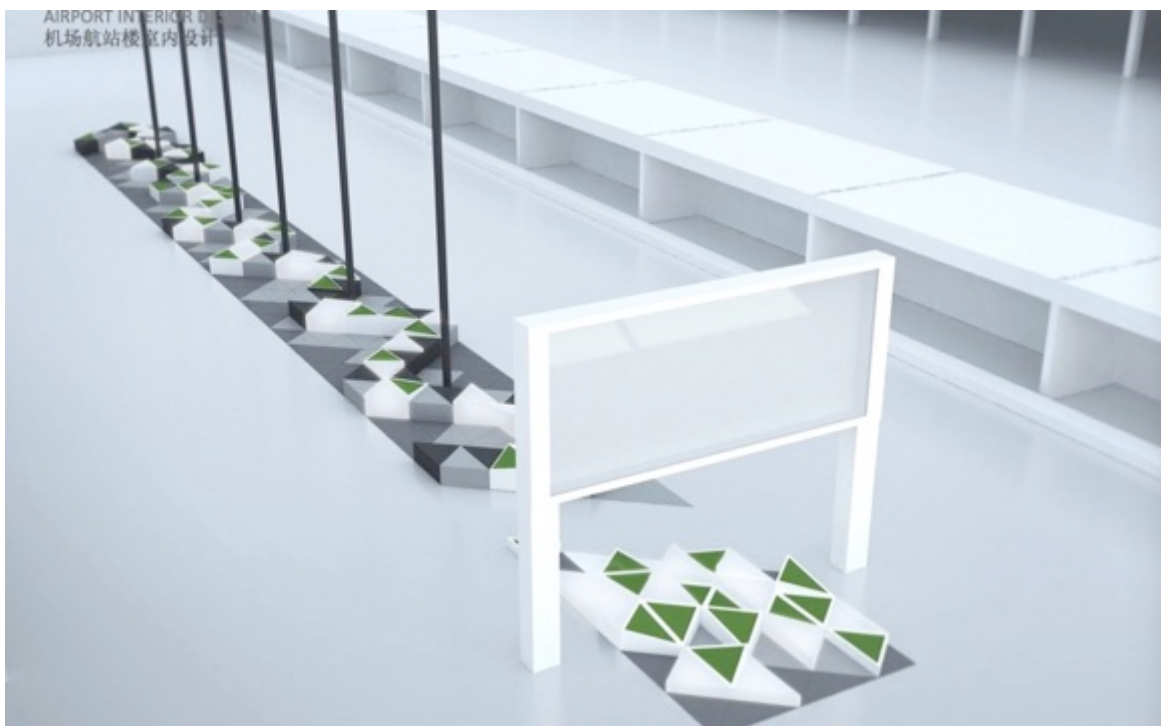


## CONCEPTION



白色的三角形單元構建出婉轉伸展的魏形景觀，象徵楚文化中雲龍的靈動，也代表溫玉的品質。

高低參差的白色三角，形成置物、座椅和裝飾照明的不同功能組合，用當代的设计語言提亮整個區域。



# PROJECT 6





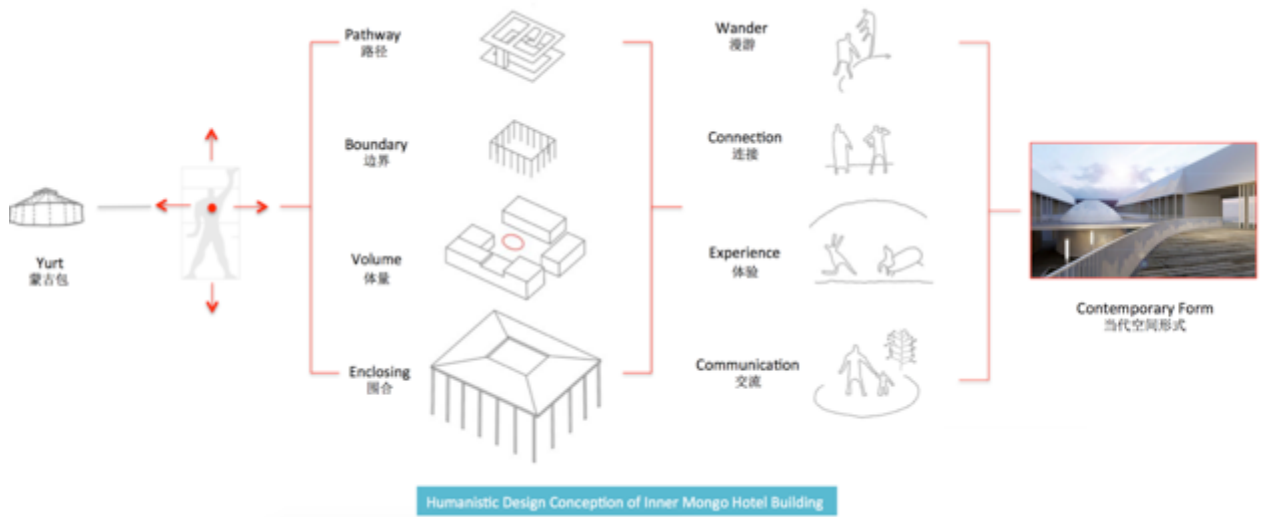
## PROJECT 6

### **Inner Mongolian Hotel Building Design**

Wuanghuagou, Huntengxile, China  
Autumn 2018

**T**his project is located in the natural grassland of Inner Mongo of China where is continental monsoon climate area.

**U**nique surrounding and traditional yurt provided great space for us to explore how the localism can work in the contemporary hotel architecture. Instead of simply copy the form of the traditional grassland yurt, this project derives from the local climate and terrain, and creates a contemporary spatial form.



The Humanistic Design Conception of Hotel building in in Huitengxile grassland of Inner Mongolia (Draw by Draw by Zhang Qian)



***CONCEPTION DESIGN OF HUANG HUA GOU HOTEL OF HUITENGXILE GRASSLAND***





FIRST FLOOR PLAN



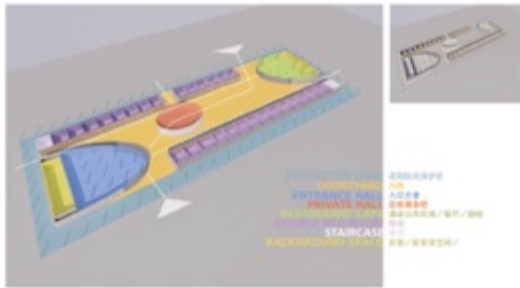
SECOND FLOOR PLAN



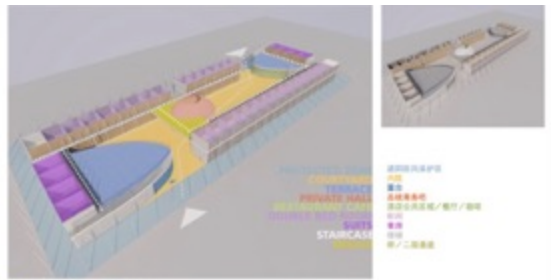




CONCEPTION DESIGN OF HUANG HUA GOU HOTEL



FLOW OF THE FIRST FLOOR



FLOW OF THE SECOND FLOOR

Based on experience of space, the main design method of this project was to return to the site and tradition to create the new ecological architecture form. Instead of simply copying the form of the traditional grassland yurt, this project was derived from the local climate and terrain, and created a contemporary spatial form. We based the design result on the study of the traditional Mongolian yurt form and yurt' group layout, and also taken the factor of limited area asked by the client into account.

CONCEPTION DESIGN OF HUANG HUA GOU HOTEL



# PROJECT 7



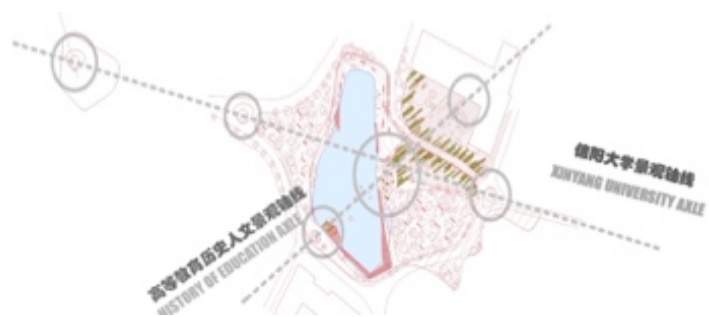
## PROJECT 7

### **Xin Yang University Landscape Design**

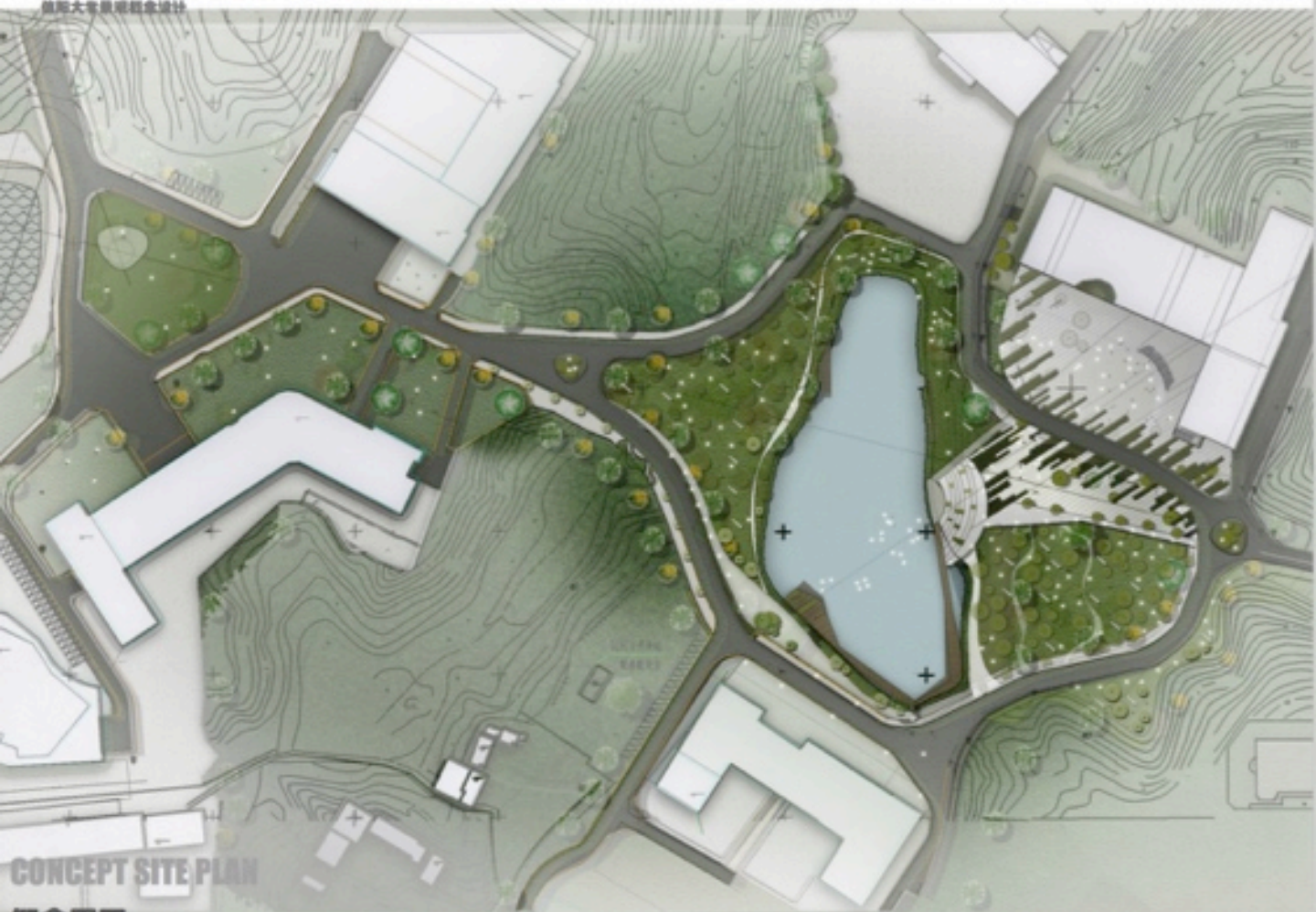
XinYang, Henan, China  
Autumn 2017

**L**andscape design of a local university. The task is to make the campus be more connected with the beautiful natural surrounding and more comfortable.

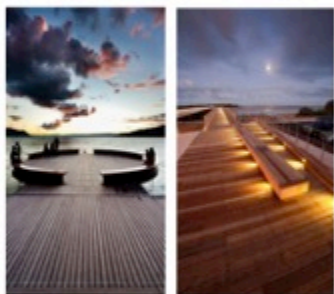
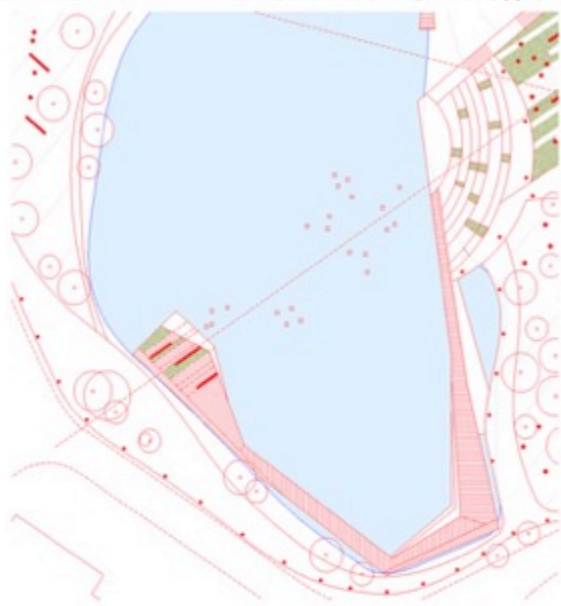
**H**umanistic care and spirit are the key of the whole design conception. The lake and following wooden path makes a new central bond for the whole campus landscape.



CONVERSATION BETWEEN XINYANG UNIVERSITY AND HISTORY OF EDUCATION  
信阳大学景观概念设计



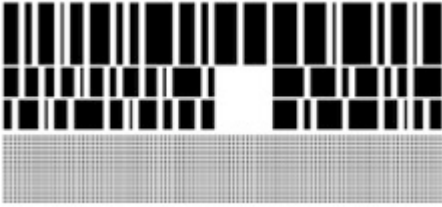




师法自然：

由湖面的自然景观开始，质朴的木质栈道环绕湖水，中间穿插着表达高等智慧的老子、孔子的语句，象征着高等智慧的源头和流动。

# PROJECT 8



PROJECT 8

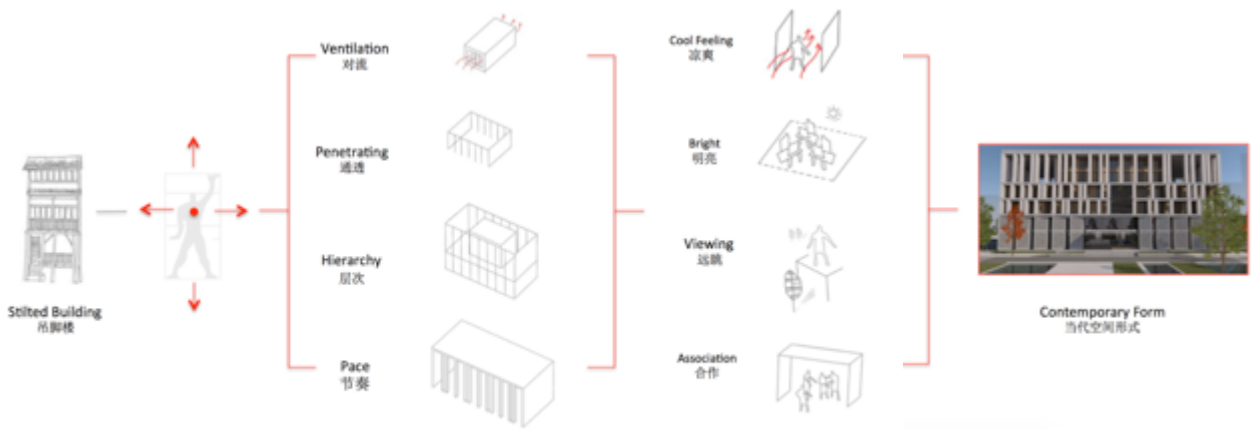
## Yulin Factory Office and Domintory Building Design

Yuling, Guangxi, China

Autumn 2019

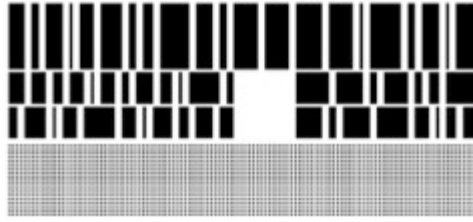
**W**hen we were asked to design the “head” buildings of an industrial area in a southern Chinese province in Guangxi, we knew that the first key of the project was to study the local architectural traditions, climate and environment.

**A**s the result of the study of local weather and tradition, the fundamental conception of both proposed buildings in this project were deeply influenced by the logical local architecture and body sense.



Humanistic Design Conception of Office Building in Guangxi

The Humanistic Design Conception of Factory building in Guangxi Yulin (Draw by Zhang Qian)



**Office building and dormitory . Yulin. Guangxi province**



**PROJECT SITE**  
项目场地

**AESTHETIC SYSTEM**  
美学体系

- GEOMETRICAL ELEMENTS VERTICAL/  
HORIZONTAL STRUCTURE  
垂直/水平的结构体系
- **CLEAR, OBVIOUS STRUCTURE**  
清晰明了的结构
- DIFFERENT TEXTURES  
不同质感的表现
- ELEGANT WHITE SURFACES  
优雅的白色立面
- TRANSPARENCY  
通透性



As the result of the study of local weather and tradition, the fundamental conception of both proposed buildings in this project were deeply influenced by the logical local architecture and body sense.





Office Building



The multiple façade layers and grilles wall surfaces enhance the ventilation effect of the whole building. Derived from the vibrant geometrical system of traditional timber frame structure, the specific performance of façade creates the shadows with the retracted opening. The new design draws a playful appearance for porches with the horizontal and vertical elements that were very common in this countryside in the past.







Concerning the comfort of body and local climate offers us great opportunities to explore the complex connection among function, material and technology. We created the new image of the natural ventilation and sustainable building to the site. And the most invigorative part of the design process was that we transformed the local traditional repetitive structural system into the contemporary structural form.

Model\_C

- REVISED FACADE plan with EXTRENAL SHADING
- with Cooling and Heating
- with Mechanical Ventilation



Model\_C

- REVISED FACADE plan with EXTRENAL SHADING
- with Cooling and Heating
- with Mechanical Ventilation



Model\_D

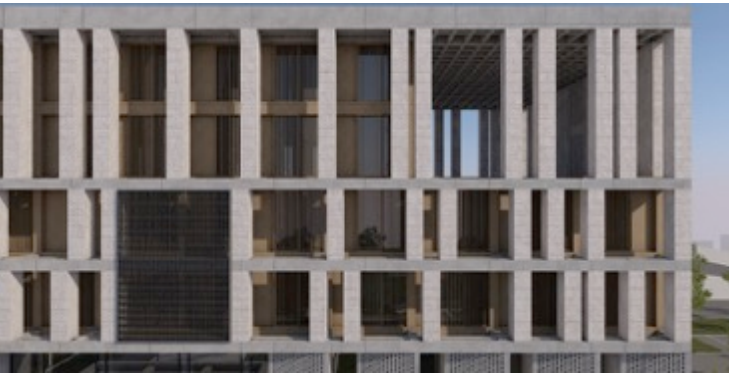
- REVISED FACADE plan with EXTRENAL SHADING
- with Cooling and Heating
- with Mechanical Ventilation and
- with NATURAL VENTILATION



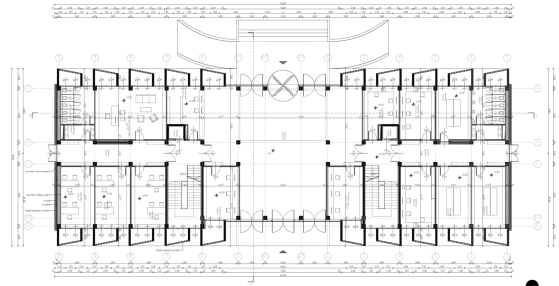
Model\_D

- REVISED FACADE plan with EXTRENAL SHADING
- with Cooling and Heating
- with Mechanical Ventilation and
- with NATURAL VENTILATION

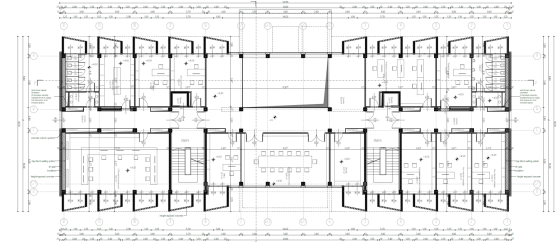




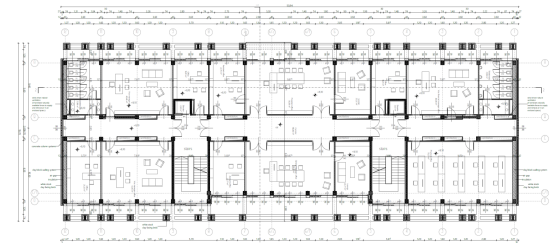
**Office Building**



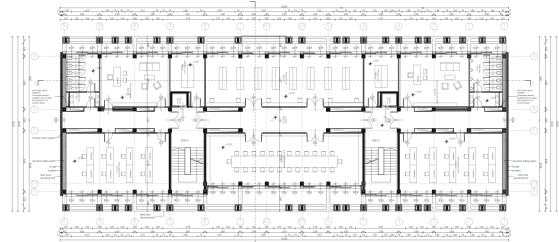
1st floor  
Office building



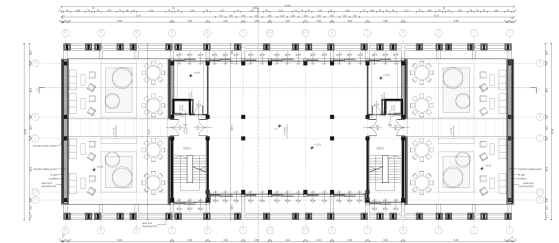
2nd floor  
Office building



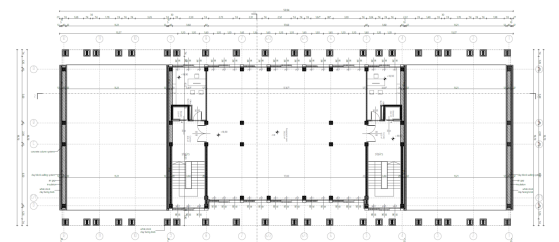
3rd floor  
Office building



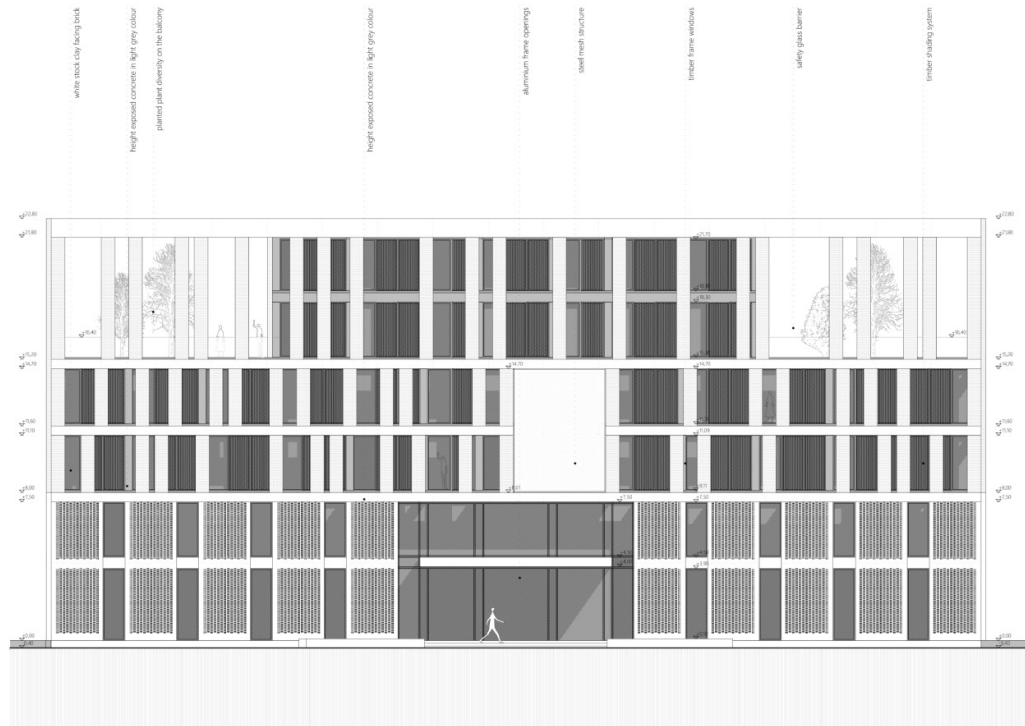
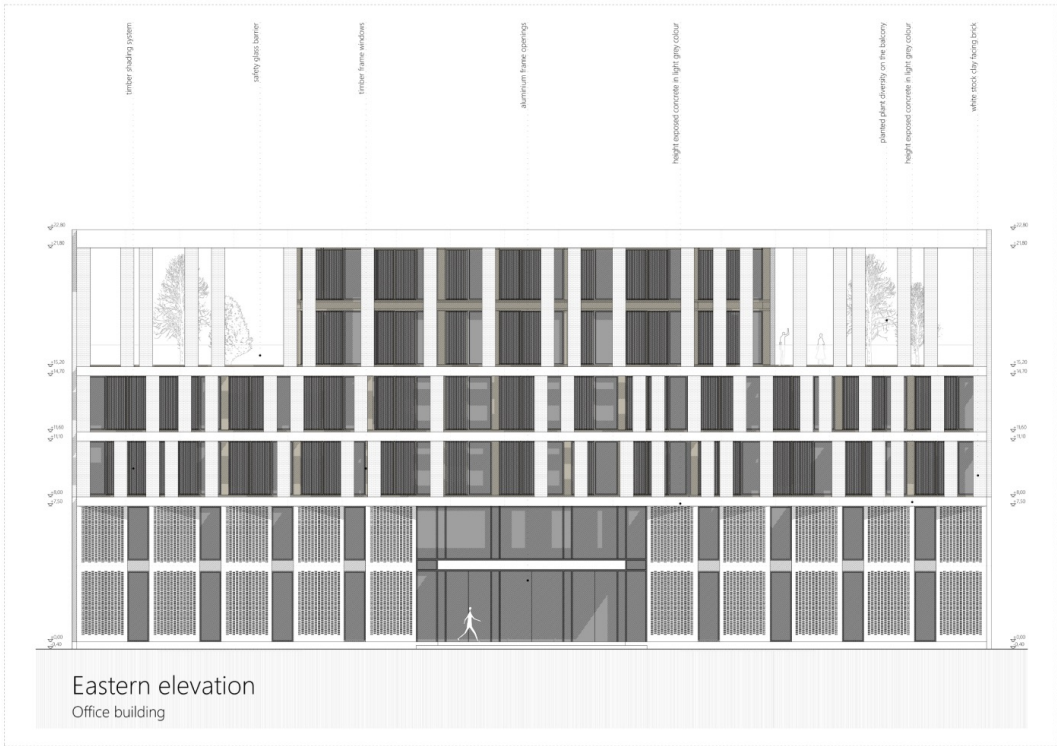
4th floor  
Office building



5th floor  
Office building

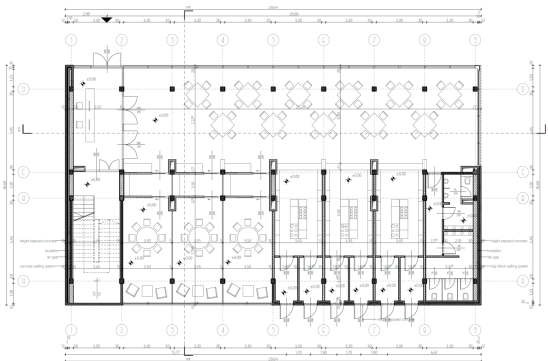
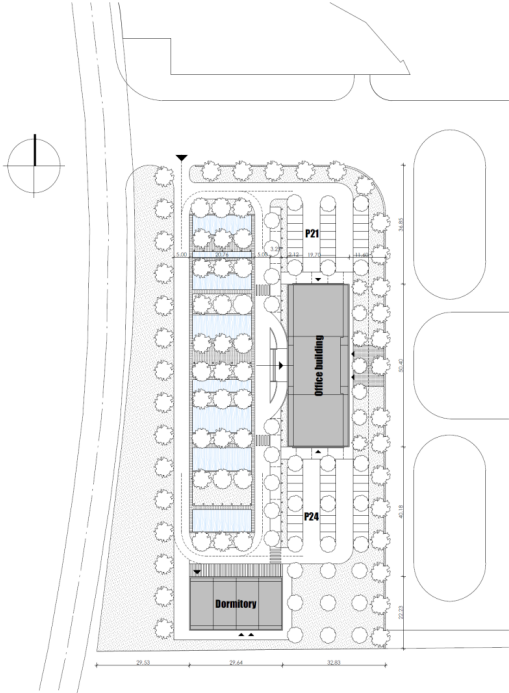


6th floor  
Office building

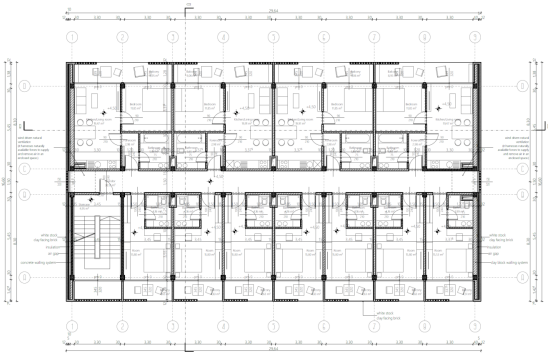




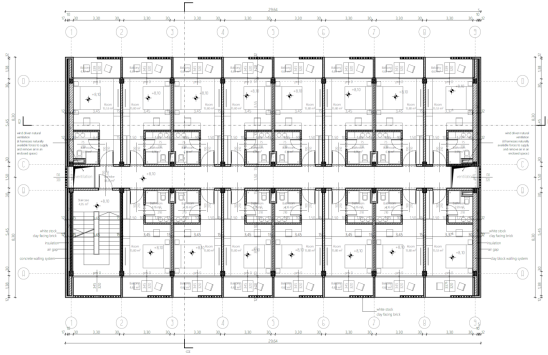
**Dormitory Building**



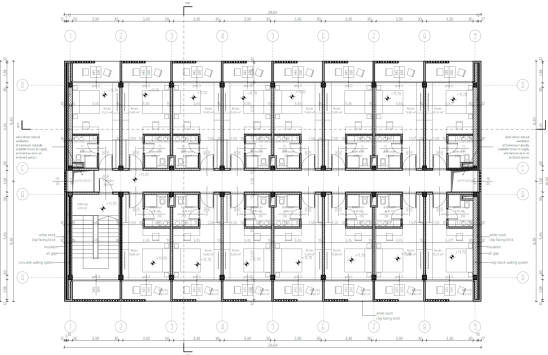
**1st floor**  
Dormitory building



**2nd floor**  
Dormitory building

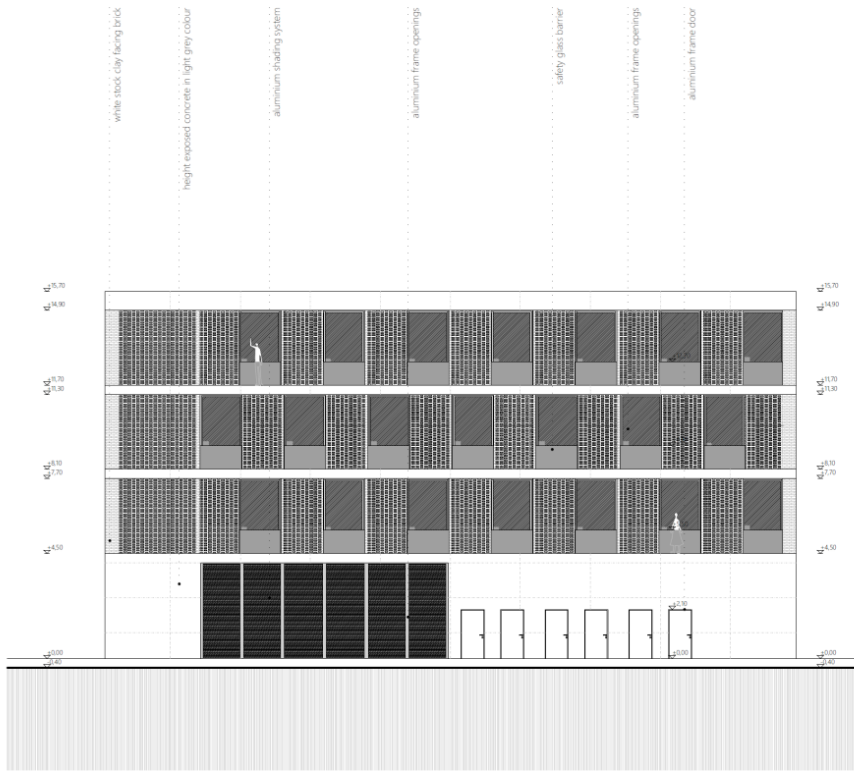


**3rd floor**  
Dormitory building

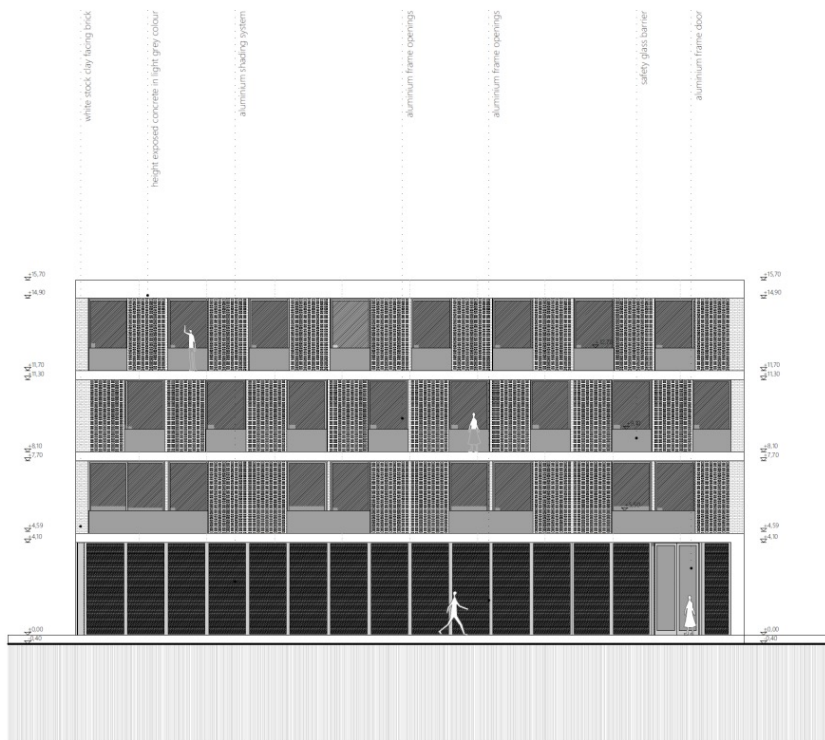


**4th floor**  
Dormitory building





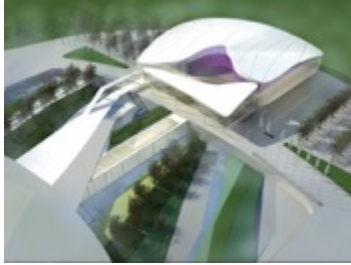
South elevation  
Dormitory building



North elevation  
Dormitory building

# PROJECT 9





## PROJECT 9

### **The Extension Architecture & Landscape Design of Wuhan Stadium and Center**

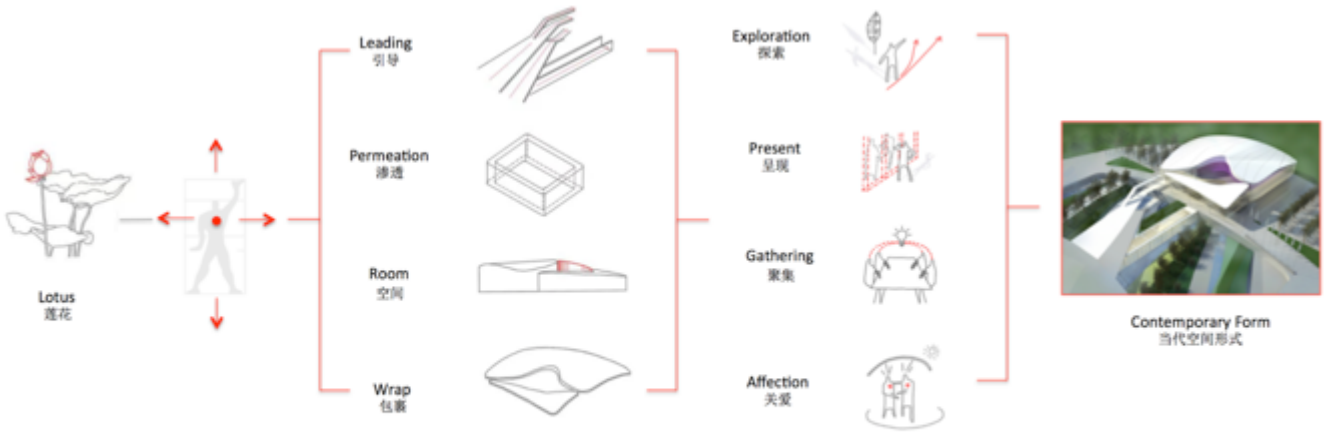
Group work

Wuhan, China

2017-2018

**T**he requirement of client is to establish a new VIP conference center for the 7th Military World Games, which was held in 2019. Traditional symbol “Lotus” inspired the conception of the proposal, and it also could arouse people ‘s affinity for the new contemporary form of the space.

**N**ew building presents a beautiful form and implication, and it has official appearance and strong functional connection with the existing stadium.



Humanistic Design Conception of Annex of Wuhan Sports' Center

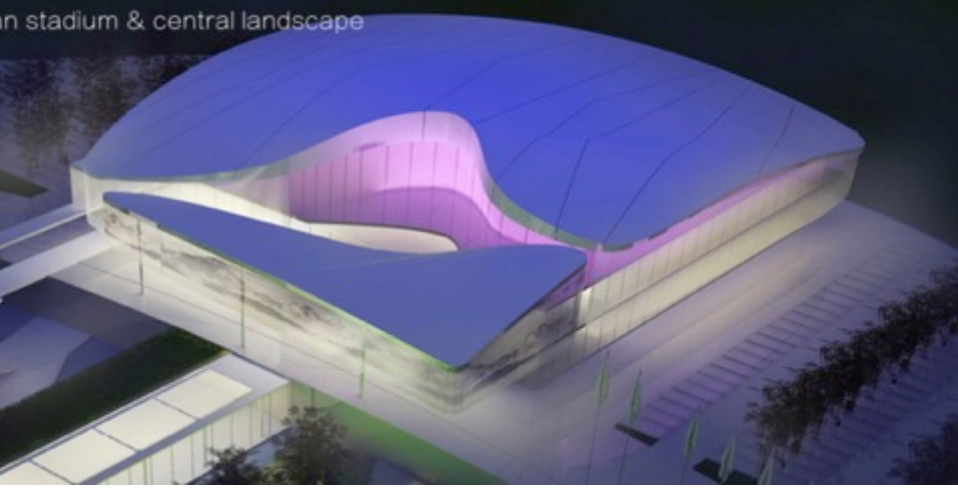
Fig.30. The Humanistic Design Conception of Annex of Wuhan Sports' Center (Draw by Zhang Qian)

# LOTUS FLOWER

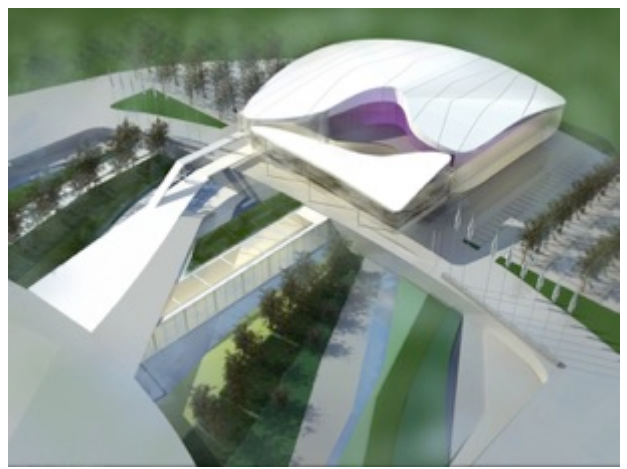
the extension architecture of the wuhan stadium & central landscape



Our design team used some contemporary methods to integrated Chinese style with the international visible communications ; in order to explained a balance between the biology together with the stadium , we considered the local geography , culture , and also we respect the humanity of the wuhan city .  
 Lotus flower will act a crucial status in this project ; in the conception of the Chinese people , lotus flower means peaceful and humble . It creates a very balanced environment for this stadium , but also for this city .



**project**  
 wuhan stadium extended vip architecture & landscape



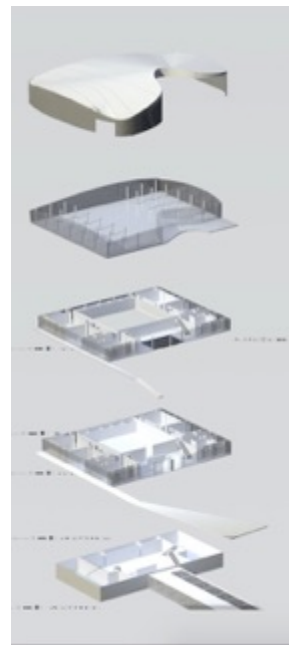
## Transformation of symbols

The proposed building together with the stadium are appeared in an organic system for which was created by a new landscape, a garden between them. The integral link between the main elements of composition is conceived as several branches of lotus flowers in traditional Chinese ink paintings. And the proposed new conference building is figured as bloom of the flower .



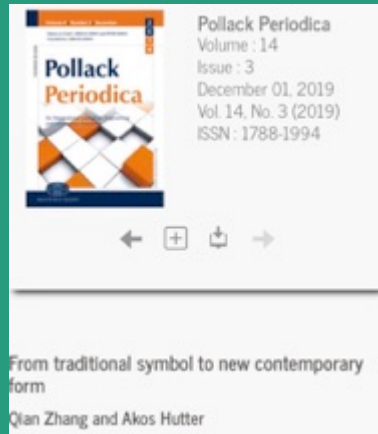
## Transparent and translucent

We applied the effect of Chinese brush painting to emphasize the main entrance of the building. The gently smooth shape of different roof partitions forms the petals of lotus flower and the white surfaces, and both parts can get different tones by illuminating colors.



## Sustainable energy conception





## PUBLISHING & AWARD

# 02

**PUBLISIONS**

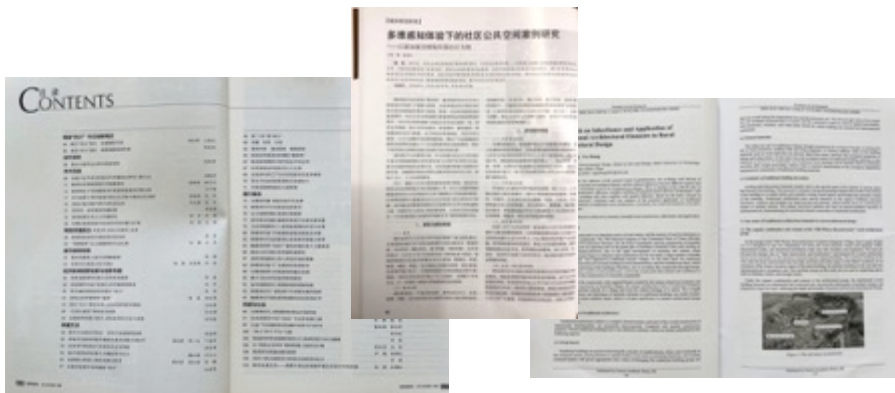
# | PUBLICATIONS



1. “From Traditional Symbol to New Contemporary Form”Architectural Conception of Conference Center at the Wuhan Sport Center, Pollack Periodica (ISSN 1788- 1994),Vol. 14, No.3, 2019
2. Research In Heritage And Application Of Traditional Architecture Elements  
In Rural Architectural Design ,Frontiers in Art Research , ISSN 2618-1568, 2021.4, pp.16-19
3. 基于城市再生的工业遗址空间再生策略研究(Research on the strategy of spatial regeneration of industrial sites based on urban regeneration), Da Zhong Wen Yi, ISSN 1007-5828, 2021.05, pp.96-98.



# PUBLICATIONS



- 4.日常都市主义视角下城市公共空间更新策略(Renewal strategy of urban public space from the perspective of daily Urbanism), MEI YU SHI DAI – City, ISSN 1003-2592, 2021.11, pp.34-36.
- 5.多维感知体验下的社区公共空间案例研究 (A case study of community public space under multi-dimensional perceptual experience), ISBN ISSN 1003-2592, 2021.11, pp.40-42.
- 6.新市场 新生活—新媒介表达在创新环境艺术设计中的实践 (New market, new life – the practice of new media expression in innovative environmental art design) , ISBN ISSN 100328277, 2019.11, pp. 110-112.

## AWARDS



★ 2019

“Excellent Bilingual Teacher” of the Hubei University of Technology  
“For the high level international educational program of design and architecture “

★ 2019

“Bronze Award of Wuhan Creative Design Contest” of Wuhan Design Biennale“ public space and landscape design of waterfront architecture of South lake in Wuhan

★ 2018

“Best Design Award of New Retail” of Intime Department Store Group “Interior design of New Retail flagship store of Intime Department Store”

# 造物者

## THE CREATORS. WE THINK WITH OUR HANDS.

### 实验性空间设计综合课程展

Hybrid courses exhibition of experimental space design.

### 展览班级：艺术设计学院20创新班

Exhibition class: 20 Innovation class of art design

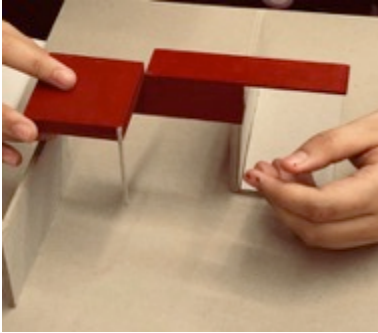
展览地点：浙江工业大学国际创新中心  
展览日期：2021.12.13—2021.12.24  
Exhibition Venue: International Innovation Center  
Industrial University of Technology  
Exhibition Time: 2021.12.13—2021.12.24

策展团队：策展 Aimin Han  
设计指导：Aimin Han 策展  
摄影指导：周文强  
摄影编辑：张健

Curatorial Designer: Zhang Qian Aimin Han  
Design Guidance: Aimin Han Zhang Qian  
Design Guidance: Zhou Wenqiang  
Photography Guidance: Zhang Jian



# PROGRAMME 1



Program 1

## **Innovation and international cooperation in environmental design teaching**

One of the main person in change,  
Major curriculum developer,  
Core teacher of the courses,  
Class tutor  
2018-

**E**ducation Program by Hubei University of Technology, Art & Design School \_ University of Pécs, Faculty of Engineering and IT, Institute of Architecture.

**T**his program began from September 2018, the first class graduated last summer and the second class “ 20 Innovation class” started last September.

# Background



- **“Innovation class of Architecture”**

University of Pécs, Faculty of Engineering, Institute of Architecture and Hubei University of Technology agree to launch a cooperation offering an international program called ‘ARCHITECTURE INNOVATION CLASS Program’ for students of HBUT School of Arts and Design.

- **Architectural Innovation teaching for environment design classes**

The freshmen of HBUT School of Arts and Design usually have qualities like art students, and they get one year’s painting, drawing and basis art design courses at the first year. In next three years, students usually learn environment design knowledge from technical and artistic perspective .

We have practiced innovation and international cooperation teaching for innovation classes and some environment design classes with undergraduate and graduate students in School of Arts and Design.

# AIM

## A

By creating vivid and fruitful learning process, to lead the students with art and design background being immersed in the professional architectural and environmental knowledge through various challenging practical and theoretical experiences, to guide the students to be more creative and more professional in space design field , and get more solid and impressive results .

## B

By Applying Innovation teaching methodology to remove the gap between architecture and environment art design education , between art and engineering, between comprehension and expression .







**Experimental Space Design**



**Building Structure Design**



**Cabin Design**



**Furnishing Design**

**Space Materials And Structures**



**Public Space Design**



**Experimental Space Design**



**Minimal Living Space Design**



**Graduation Design**



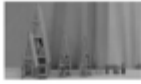


Solitude 小屋设计——一种极简、中性的设计，旨在为那些寻求宁静、独处和与自然连接的人们提供一个理想的避风港。它由坚固的木材制成，具有陡峭的三角形屋顶和开放式的内部空间，旨在营造一种宁静和宁静的氛围。小屋位于风景如画的自然环境中，周围环绕着壮丽的山脉和清澈的水域。它的设计灵感来自于传统的山间小屋，但采用了现代材料和建造技术。Solitude 小屋不仅是一个理想的度假胜地，也是一个完美的冥想和反思空间。它提供了一个远离喧嚣和压力的地方，让人们可以重新连接自己，并享受大自然的宁静之美。



# Solitude

Project name: Solitude cabin  
 Designer: ArchitectTOUR



## DESCRIPTION OF DESIGN

Solitude expresses a sense of being alone, and a sense of being part of something bigger than oneself. Alone in body, but incorporated in spirit. It's a modern, minimalist, and functional design. It's a place to retreat to, a place to recharge, and a place to connect with nature. The cabin is designed to be a sanctuary, a place where you can escape the noise and the stress of the world. It's a place where you can find peace and tranquility. The design is inspired by traditional mountain huts, but with modern materials and construction techniques. Solitude is not just a cabin, it's a lifestyle. It's a way of living that values solitude and connection with nature. It's a place where you can find yourself again, and where you can enjoy the beauty of the natural world.



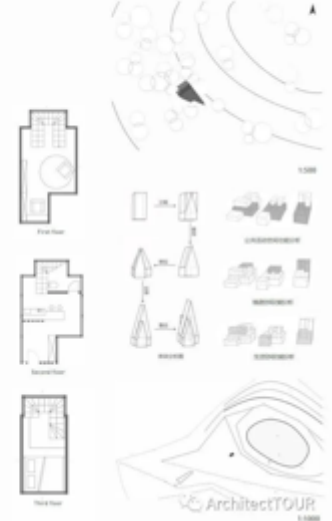
# SOLITUDE

## ——疗愈小木屋设计

IN THE NOISE, ENJOY THE SOLITUDE

第一个声音 清晨风和过云层了少影 晨曦于 破晓 晨光透过云层洒下 让大地一片生机 鸟鸣虫鸣 风声雨声 这一切都构成了大自然的声音 在这片宁静中 人们可以感受到大自然的伟大和美丽 也可以感受到自己的渺小和脆弱 这种体验是一种心灵的洗礼 也是一种灵魂的升华 让人们在喧嚣的世界中找到一片属于自己的净土 让人们在孤独中找到一种内心的力量 让人们在自然中找到一种真正的快乐和满足。

The white dove slithered the water over a need perched on it. And the need had just prepared a song enough to love this broken, muddy earth.



# 藏身之地

Project name: Small holiday cabin design  
 Designer: ArchitectTOUR

## ——小型度假木屋设计

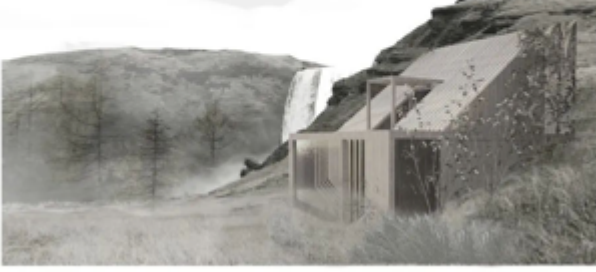
small holiday cabin design



The total area is about sixty square meters. Basically sitting north facing south and can accommodate 1 to 4 people. The main activity area consists of a living room, dining room, bathroom and bedroom. 总建筑面积为六十平方米，基本坐北朝南，可容纳1至4人居住。主要活动区域由客厅、餐厅、卫生间和卧室构成。

The living room is separated by a raised terrace and the dining room. The dining room is integrated with the kitchen. The bathroom consists of a shower room and a toilet in the space under the stairs on the south side. The atrium covers the staircase and entrance. The second floor is home to the bedroom as well as the outdoor deck. The middle consists of a semi-open grey space as a transition.

客厅与餐厅的划分由平台与餐厅区分。餐厅与厨房一体，卫生间在楼梯下方完成淋浴间和厕所。中庭覆盖楼梯和入口。二楼是卧室以及室外平台。中间由半开放的灰色空间作为过渡。



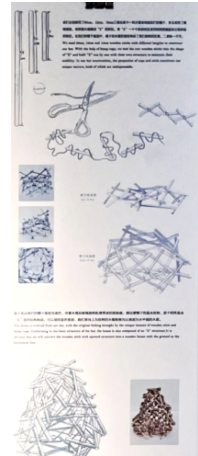
# Cabin Design Course

2022





**Space, material & Structure**  
**Course 2021**



# Architecture Drawing Course

2019



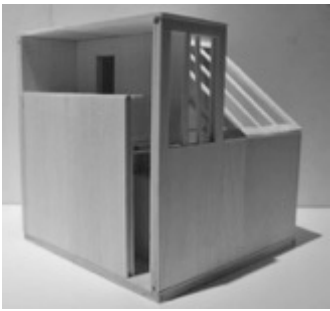
**Objectives:** The main task of this course is to make students pay attention to the relationship between hand drawing and architectural drawing, understand different types and expressions of architectural drawing, and develop the ability to express design concepts on paper with lines. Through the study and practice of this course, students can realize the importance of hand-drawing in architectural design, and use the expression of lines to help the generation and expression of design concepts.





## ***Minimal Living Space Design Course***

2018



# PROGRAMME 2





Program 2

## “New Normal, New City Life”

### Blanding International Workshop & Exhibition

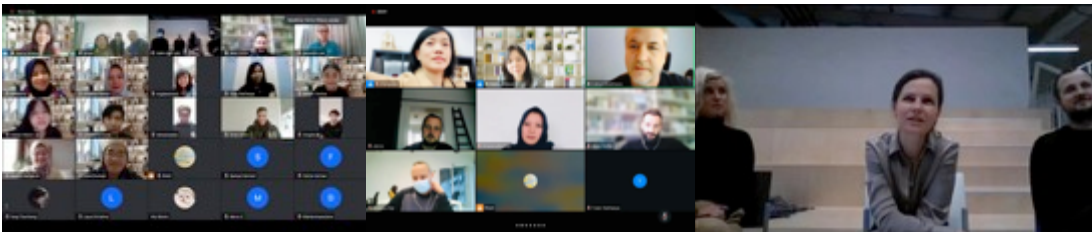
One of the main Planners,  
Organizers and tutor  
2020, 2021

**We** organized the blending international workshop with four universities, Hubei University of Technology, University of University of Pesc, École Nationale Supérieure d'Art de Dijon and BINUS University.

**S**ince the beginning of 2020, the epidemic has affected the lives of almost every city in the world. The workshop focuses on the how this new normal influence the public life of city.

## Workshop activities and exhibitions

The international blending workshop was jointly organized by Hubei University of Technology, University of Pécs, BINUS University and ENSA Dijon. In three weeks, we did cloud classroom, online open lectures, offline and offline workshops, cross-disciplinary teamwork and online and offline exhibitions.

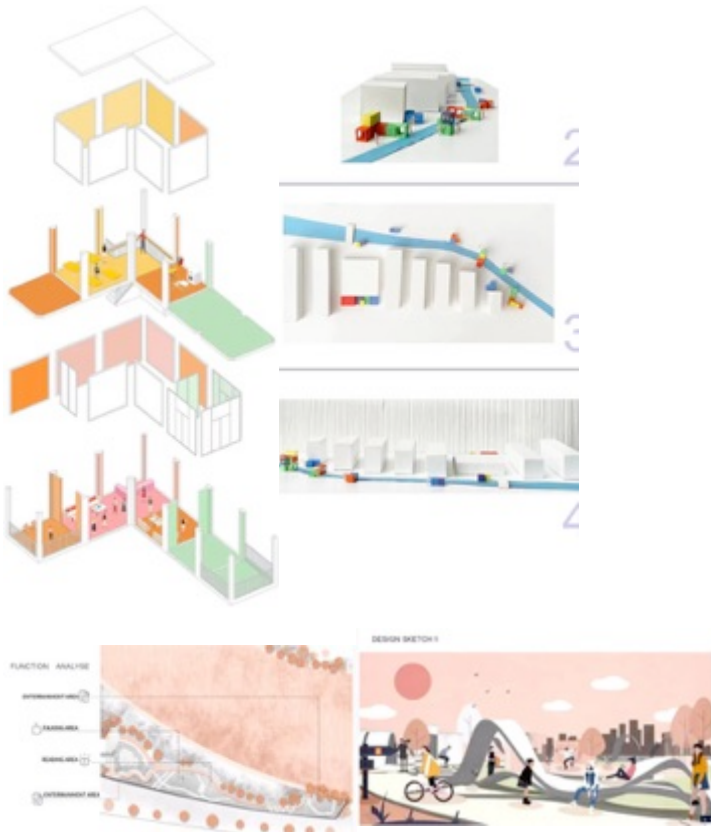




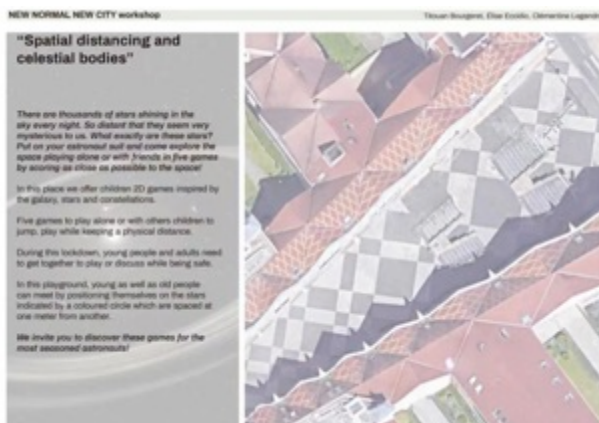
Undergraduate and graduate students from Hungary, China, Indonesia and other countries majoring in design discussed the new normal and new distance between urban public space and urban public life in the post-epidemic era from different perspectives, including urban design, architectural design, interior environment, visual design and public art.

Students discussed the change of urban public space use mode under the influence of the epidemic and the problems of new urban social distance. Participating students' group choose one public location of the four countries to explore the design.

## Students' works



Under the new international context of workshop and the global pandemic situation, more than 100 students from all over the world under the guidance of the tutors, had been gathering together offline and online to explore "New normal, New City life". In several weeks, all groups created remarkable works.



# PROGRAMME 3



## Program 2

**“New Normal,  
New City Life”**

**Blanding International  
Workshop & Exhibition**

Workshop tutor

2022

**T**he International Design Workshop is a diversified, experiential 5-week online design workshop for global design colleges. The activity is organized by GIMD, an American college design education institution. It is a highly international annual online college design education and exchange activity. The theme of 2022 is “Genius Loci” .

**G**EL — Lab in 2022 is composed of 40 design teams, 40 tutors and 400 students from all over the world. Including the United States, European countries, Asian countries, African countries, Australia, New Zealand, Canada and other countries. Including different design disciplines: architectural design, environmental design, visual design, product design, animation design, photography, multimedia design, etc.

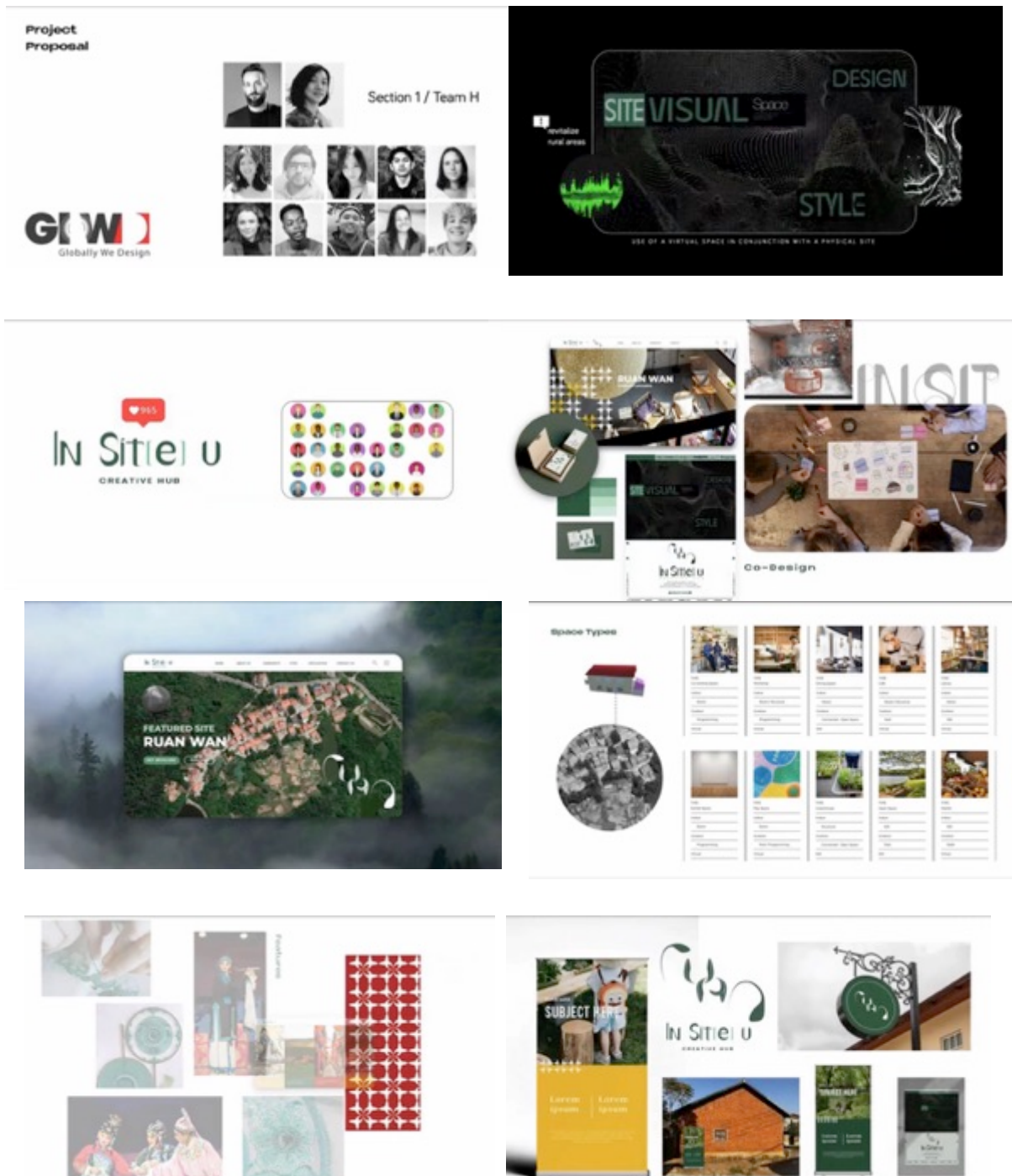




*Guiding Group*



## Video Captures of Our Students' Group Work



*“In Site|e|u” 8 minutes Video:  
Taking the revitalization of a Chinese village as a comprehensive design goal*



Special thanks to  
**AKOS HUTTER**  
Gabriella Medvegy  
Balazs Kokas  
Balint Baranyai

For their guidance, help and cooperation

**THANKS**

**CONTACT**

918880856@qq.com  
sinead2001@gmail.com

**PORTFOLIO**  
2023.01