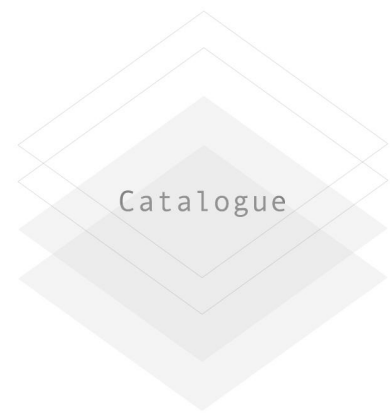


The portfolio of Qiang Gu

顾强作品集



- 01 Yin House Architectural Design Project 2018
- 09 Chaoyang Street Museum Design Project 2017
- 15 Space Transformation Bookstore Design Project 2019
- 23 Yantai Daily Newspaper Office Design Project 2019
- 31 Old Chinese-made Camera Museum Design Project 2020



Yin House Architectural Design Project 2018

Dezhou City, Shandong Province, China



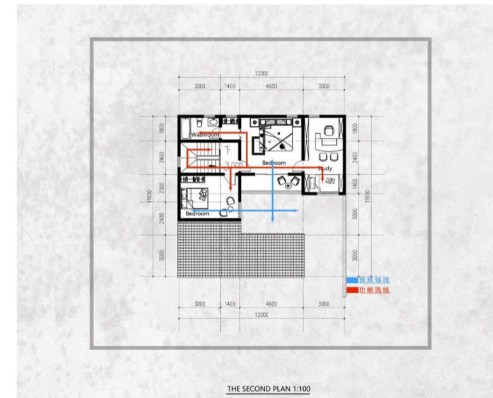
Design Background:

The 2018 China International Solar Decathlon Competition (SDC2018) was jointly sponsored by the China National Energy Administration and the US Department of Energy, which organized by the China Overseas Industry Development Association, and supported by The Central School Department of the Communist Youth League. Twenty-two teams from 41 universities in 10 countries and regions around the world were invited to participate in this competition in Dezhou, Shandong Province in 2018.

Gu Qiang and Zheng Bin, Zhang Lingling participated in the architectural design of "Yin House". Gu Qiang is responsible for the overall design and interior design of the building project. Zheng Bin is responsible for contacting the sponsors and manufacturing and transportation of the building modules in the factory. Zhang Lingling is responsible for the design and installation of all energy-saving devices.

In total, Gu Qiang contributed 55%, Zheng Bin 25% and Zhang Lingling 20% to the whole project.

Floor Plan and Traffic Streamline



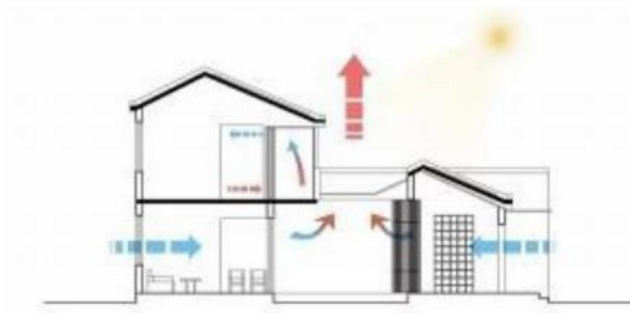
Section Plan



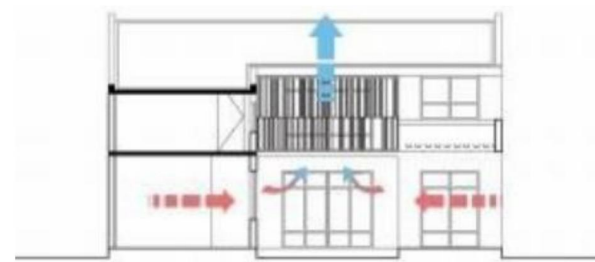
Building function and ecological node

合院是一个特有的民居形态，我们也尝试从合院的布局出发，力图将传统建筑的形态优势加以创新。	建筑北侧二层南侧一层，并形成一个整体的坡式屋顶，最大化的提供太阳能板所需的面积。	建筑功能形体为一简洁的“L”型，最大化的降低建筑的形体系数，降低热消耗。	中庭设置自然景观，并将东侧形体打开，将外部景观与中庭景观互相呼应。	置入车库并在居住经常活动或休憩的地方位置分别设置了遮阳设备，以达到遮阳辐射的目的。
The courtyard is a unique residential form, and we try to innovate the advantages of traditional architecture from the layout of the compound.	On the north side of the building, a single slope roof is formed to maximize the area required for solar panels.	The functional form of the building is a simple "L" type, which maximizes the shape coefficient of the building and reduces the thermal consumption.	The atrium sets up the natural landscape and opens the eastern body, echoing the exterior landscape with the atrium.	The shading device is installed in the garage and in the place where the regular activity or rest is located, so as to achieve the purpose of shading radiation protection.

Microclimate Feng Shui layout and ecological integration



The trade wind in summer of Yin House Design Project

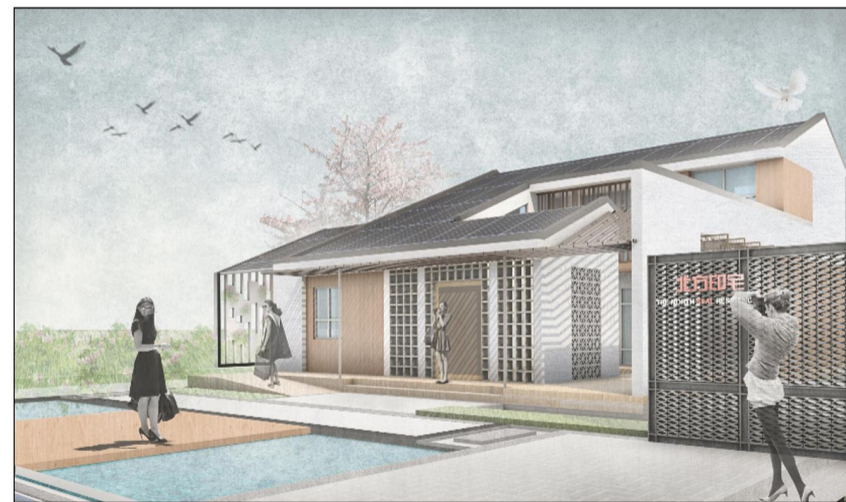


The trade wind in summer of Yin House Design Project

Rendering Perspective



ENTRANCE PERSPECTIVE



入口景观作为前后空间的界限
单坡屋顶最大化的提供太阳能板所需的面积
Entrance wall—Space boundary
Single slope roof—Maximum solar energy

COURTYARD PERSPECTIVE



车库山墙的垂直绿化防止大面积西晒
西侧的大面积绿地提供了公共活动的场所
Greenland—Public activities
Vertical greening—Shade the sunshine

GARDEN PERSPECTIVE

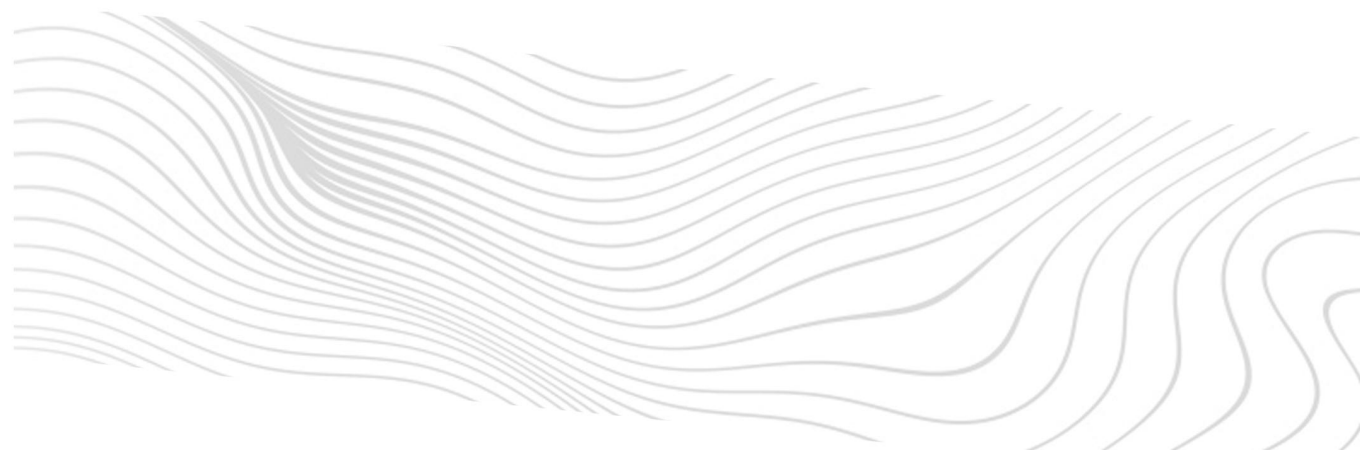


小花园为
主人休闲活动的场所
半公共空间
Garden —leisure activities
Semi public space

ATRIUM PERSPECTIVE



建筑整体平面呈围合式天井院的模式
中庭设置自然景观，东侧形体打开，外部景观与中庭
景互相呼应。
Enclosed courtyard — Half private space



LIVING ROOM PERSPECTIVE



现代手法与起居模式融入到新建筑形体
创造符合新中国居住模式与体验方式
Modern technique — New architectural form
Living mode — New residence model

BEDROOM PERSPECTIVE



定制化居住空间
新的空间体验和更好的舒适度
Customization — Shade the sunshine
Space experience — Comfort degree

Chaoyang Street Museum Design Project 2017

Yantai City, Shandong Province, China

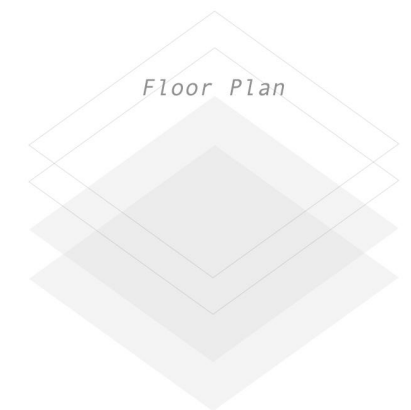
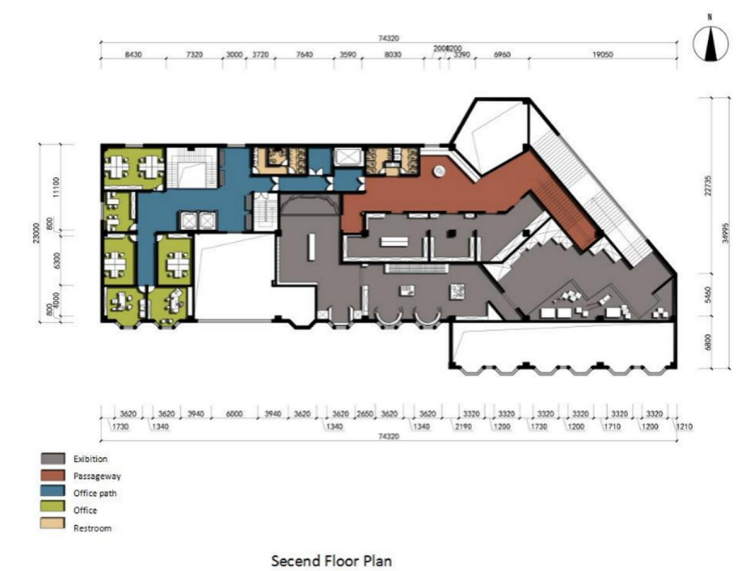
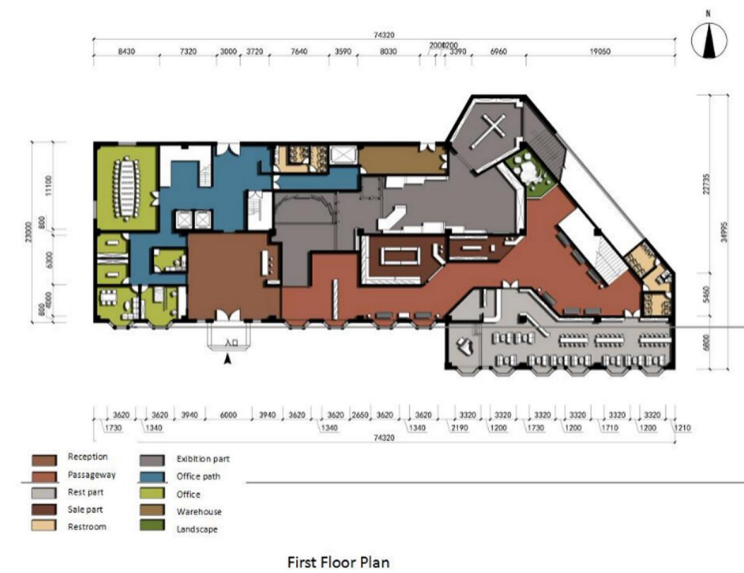


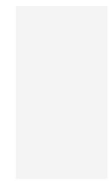
Design Background:

Chaoyang Street is located in front of Yantai, was built in 1872 (Qing Tongzhi eleven years). Its length is 400 meters. Because of its north-south direction, it was named Chaoyang Street in 1912. In 1923 the street paved asphalt pavement, this is the first asphalt road in Yantai.

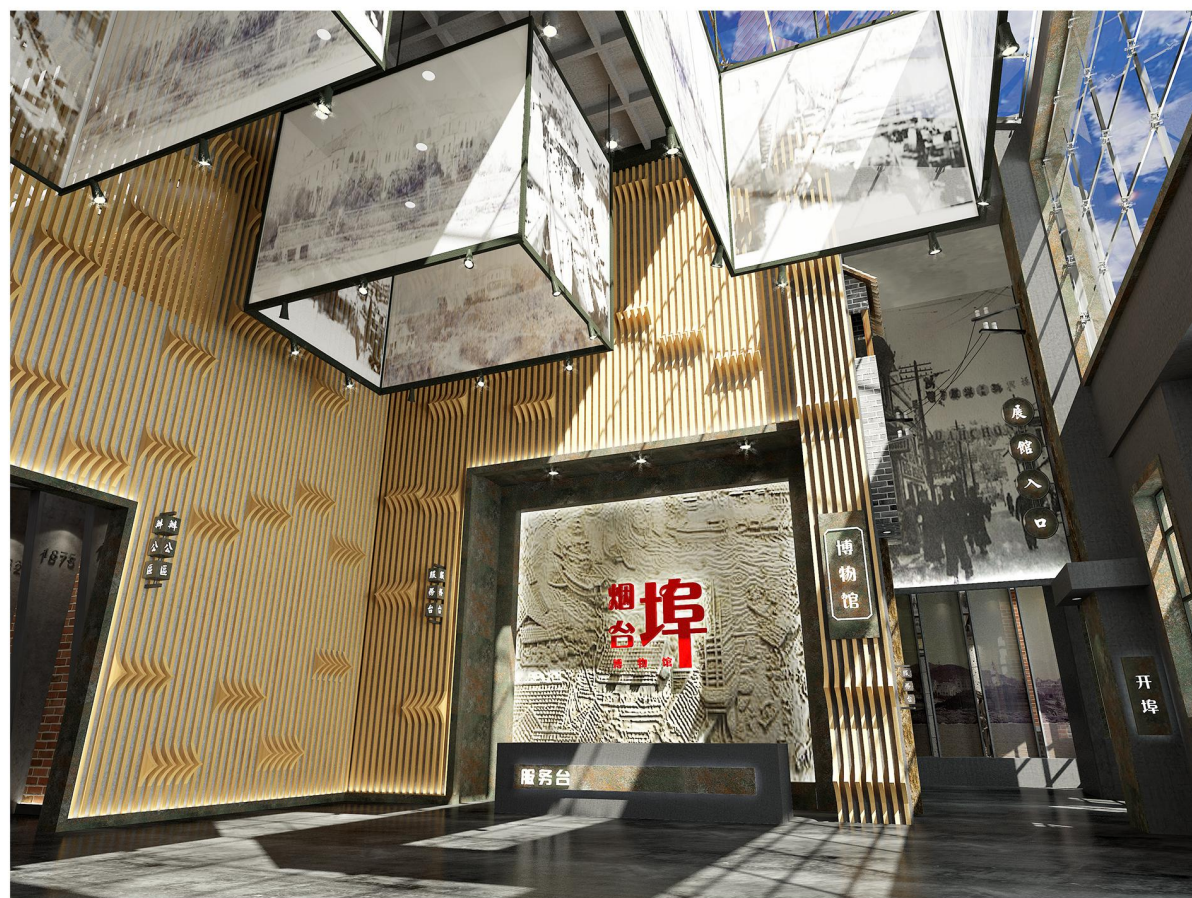
Design concept:

The design concept of this museum mainly comes from the sea, ships and waves and other marine elements into the design, because the beginning of the port culture is that the foreigners through the ocean by ships, and then came to the mainland, and then the development of the port makes Yantai city development more rapidly. Many areas of the space using the polyline shape, such as the wooden wall modeling, undulating ceiling, discounted showcase, etc., to express the meaning of the waves, most of the lights used are also blue lights. At the same time also with some Chaoyang Street European-style architectural elements to design. Most of the material selection is the original materials from Chaoyang Street, red bricks, green bricks, mushroom stone, concrete, rusty iron, logs and so on. The use of raw materials, can give a more intuitive sense of the vicissitudes of life; a sense of history, can better bring tourists into the environment. Most of the modeling uses modern styling, the original material attached to the modern style, giving people a sense of history at the same time, nor lack of modern flavor.

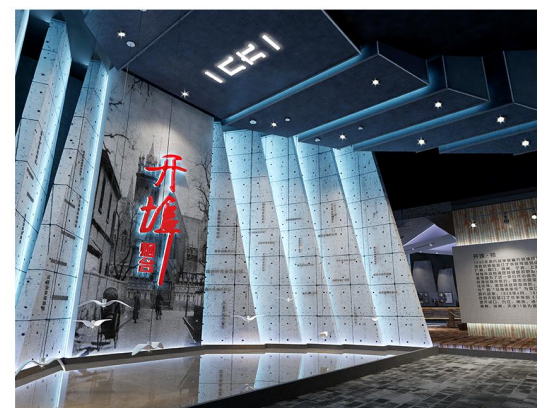




Rendering Perspective



Reception



Introduction exhibition



Preliminary exhibition

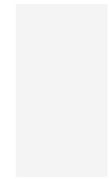


Final exhibition



Christian exhibition





Rendering Perspective



Cafe



Souvenir Shop



Space Transformation Bookstore Design Project 2019

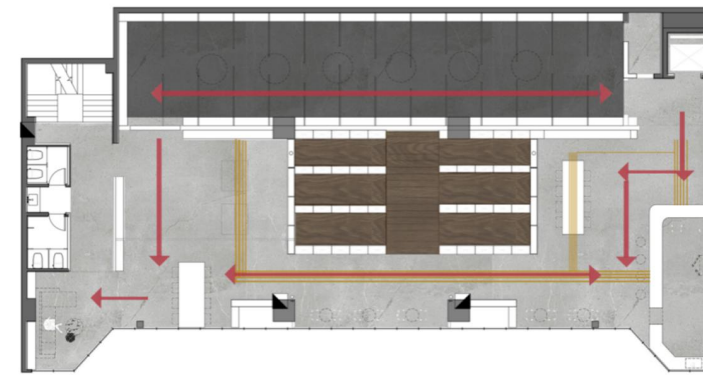
Yantai City, Shandong Province, China

Design Background:

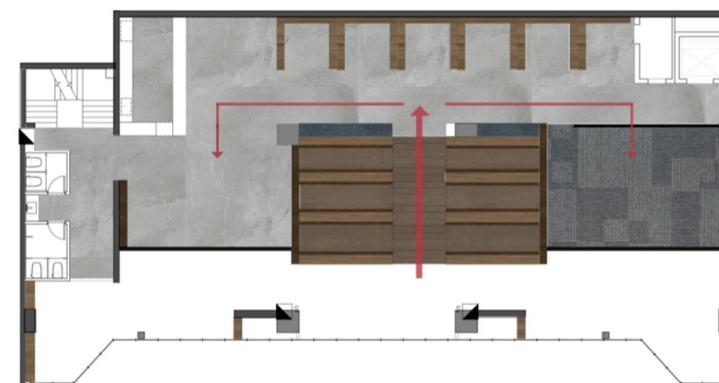
This design project is located at Wanda Business street in the center of Yantai city. The clients required me to redesign a restaurant to be a book store to offer a good experience of reading in the interior space. A good traffic streamline and the combination of different culture are required.

Design concept:

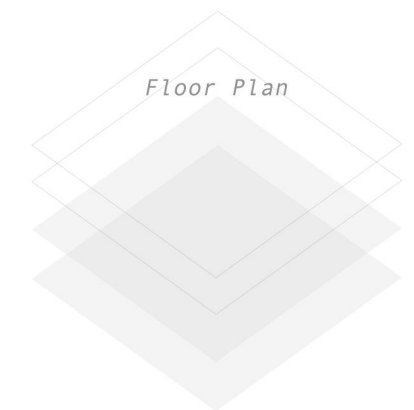
The design concept of this book store mainly comes from the Chinese traditional reading materials and habits. With adding these elements in this interior space, this interior space will let the customer have the desire to read and the resonance of thought. There are many modelings made by wood and bamboo. Based on different desire of reading requirement, there also have different style of space to enrich the experience, such as the universe and the stars. Through the space transformation design project, my goal is to using a design method to combine the traditional local culture elements and modern style in one space. Try to find a suitable design method to keep the balance of tradition and modern in one space is my final purpose. For the development of my research topic, an acceptable design project is more convincing. Also, this results can support the conclusion that traditional local culture is still widely acceptable in local place in my thesis.



First Floor



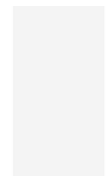
Second Floor



Rendering Perspective



Entrance

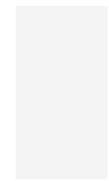


Rendering Perspective



Passageway

Space Transformation Bookstore Design Project 2019



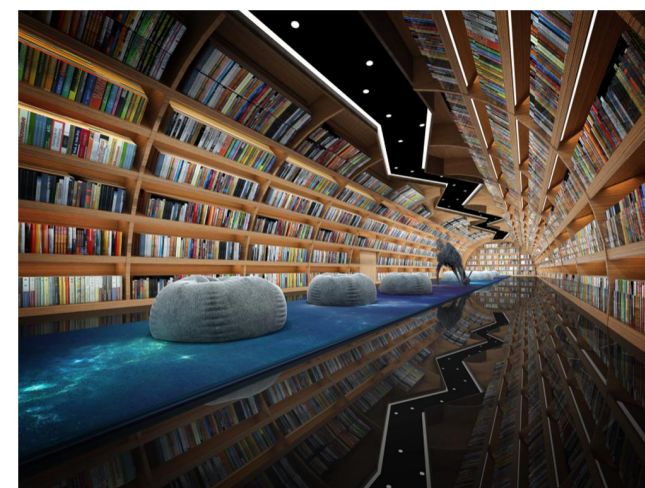
Rendering Perspective



Stair Book shelves



Leisure areas



Arch Book Shelves



Space Transformation Bookstore Design Project 2019

Yantai Daily Newspaper Office Design Project 2019

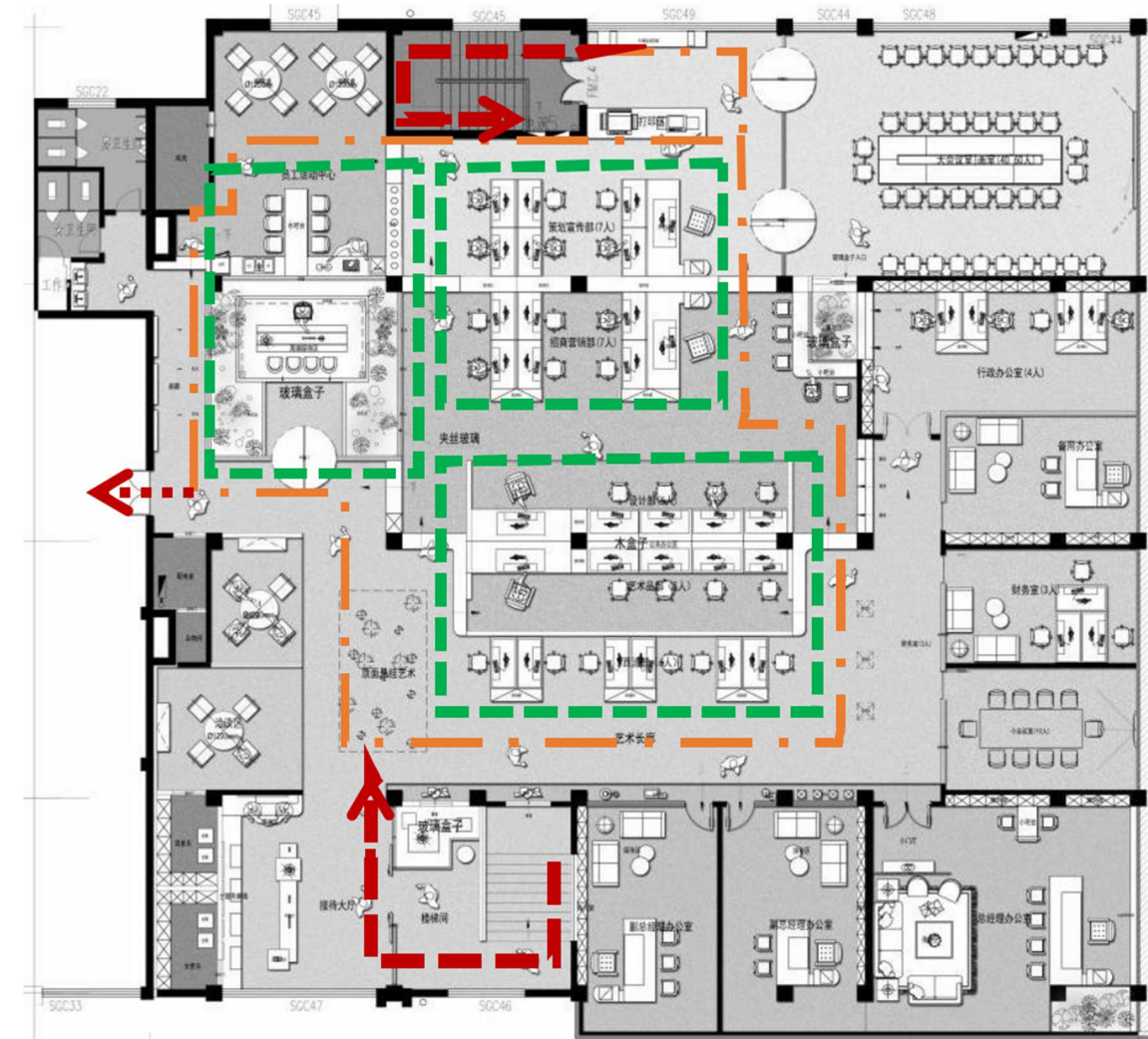
Yantai City, Shandong Province, China

Design Background:

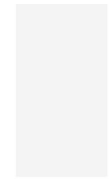
Founded in 1995, Yantai Daily has a history of 25 years. The office area of Yantai Daily is located in the downtown area of Yantai, near the harbor. It is a modern media group with a long history and vigorous vitality. Since the old office area is not properly partitioned and the old office area can no longer meet the current office needs of the daily newspaper, this design project is mainly designed and planned for the office area of the news department of the daily newspaper according to the requirements of the customer. On the basis of satisfying the needs of modern office, integrating the characteristics and history of the daily's own corporate culture, to design a relaxed, comfortable, efficient office space with corporate culture connotation.

Design concept:

The design of the office space of Yantai Daily is inspired by the marine landform of Yantai. Because Yantai is a famous seaport city, the office building of Yantai Daily is close to the seaport and can overlook the sea scenery from afar, so the Marine elements with regional characteristics are integrated into the office space. According to the company's demand for flexibility of office space, modular spaces of different scales are embedded into the space to create three independent box Spaces -- ecological box, cultural box and art box. The location of the three boxes enables employees to enjoy the scenery or culture created by at least one box from any angle of the office area, creating a relaxed and comfortable office environment.



Floor Plan and Traffic Streamline



Rendering Perspective



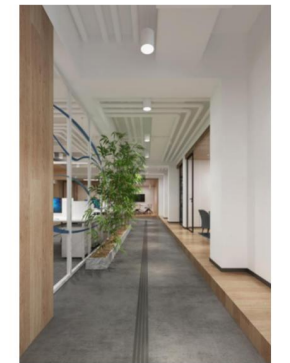
Reception



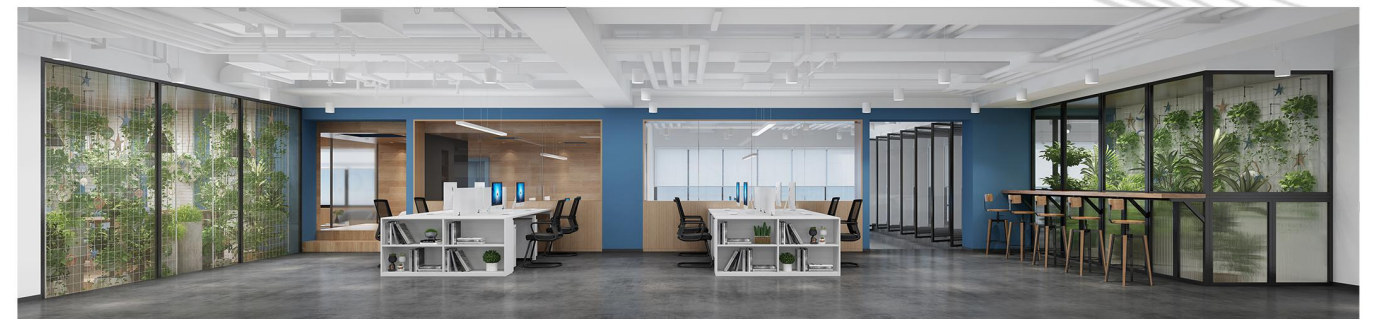
Recreational area



Art Module Office Area

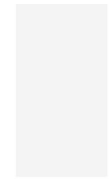


Art Passageway



Office area and ecological module, art module

Space Transformation Bookstore Design Project 2019



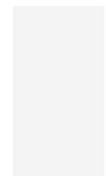
Rendering Perspective



Cultural Module Area



Space Transformation Bookstore Design Project 2019



Rendering Perspective



Meeting Room



Discussion Area

Space Transformation Bookstore Design Project 2019

Old Chinese-made Camera Museum Design Project 2020

Shanghai, China

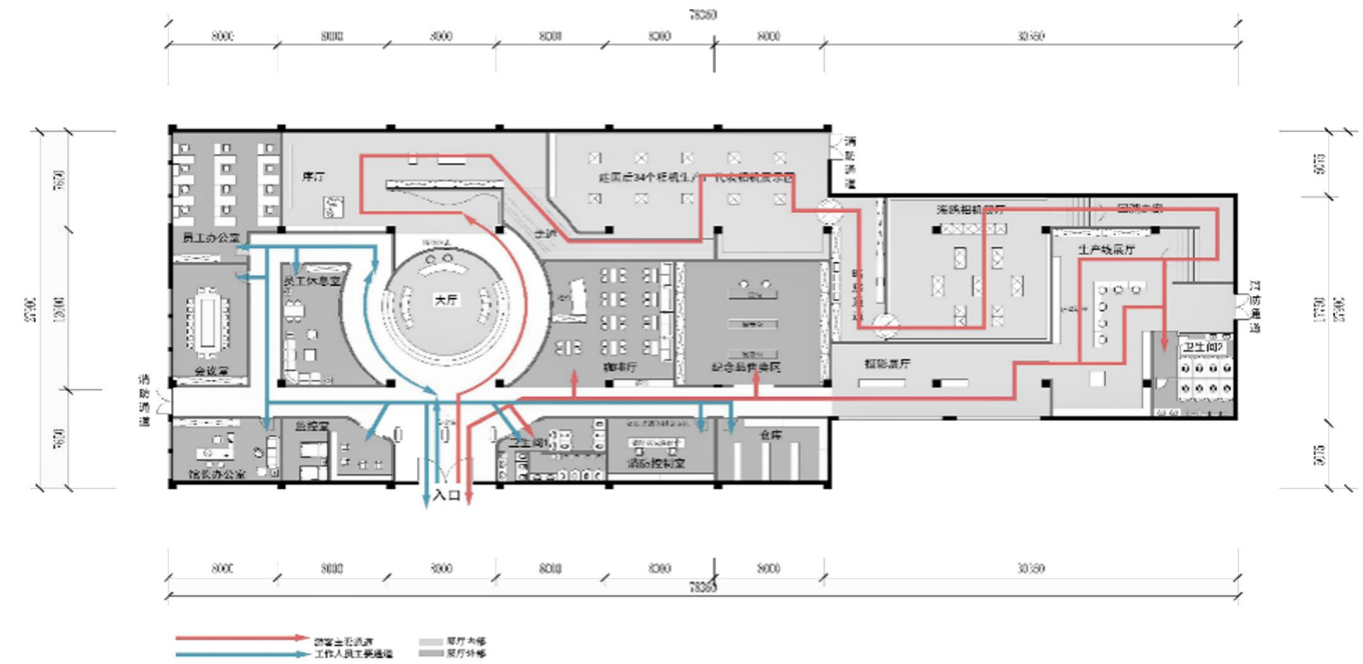
Design Background:

This design project is located at South Suzhou Road, which is an east-west road in Jing 'an district and Huangpu District, Shanghai, China. The Building became the production department of Shanghai camera Factory, where China's own cameras and lenses and other precision instruments were born.

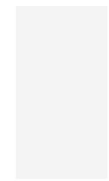
Design concept:

By grasping the regional characteristics, the regional culture of Shanghai, the site of the museum, is integrated into the design. Design the museum as a whole by using camera shapes and elements. The development history and culture of camera are used to form the theme of the exhibition, reflecting the cultural deposits of camera.

Through this design project, my goal is to using a design method to combine the traditional local culture elements and modern style in one space. Try to find a suitable design method to keep the balance of tradition and modern in one space is my final purpose. For the development of my research topic, an acceptable design project is more convincing. Also, this results can support the conclusion that traditional local culture is still widely acceptable in local place in my thesis.



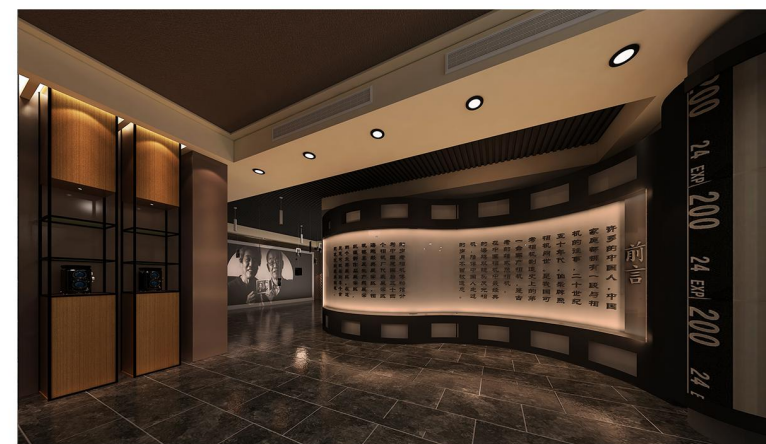
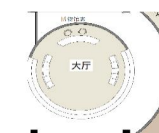
Floor Plan and Traffic Streamline



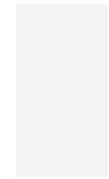
Rendering Perspective



The Lobby



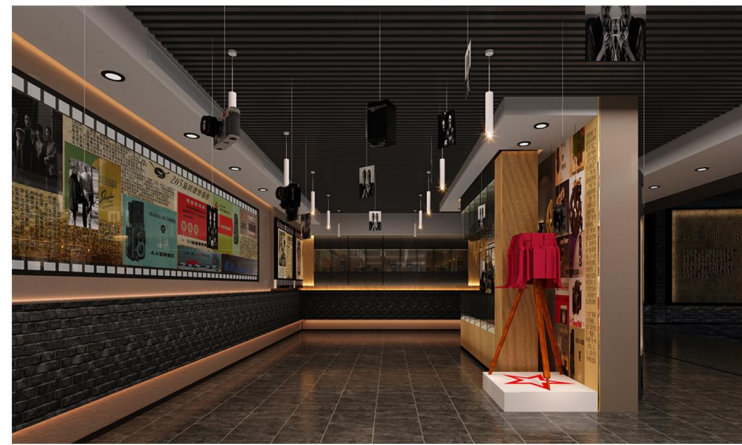
Old Chinese-made Camera Museum Design Project 2020



Rendering Perspective



34 Camera factory show



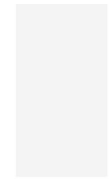
Introduction Exhibition



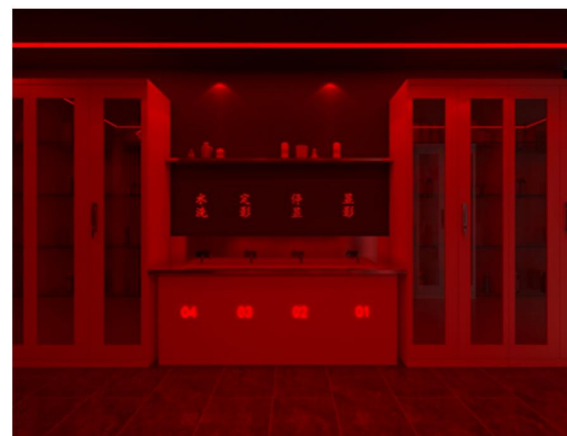
Passage way 1



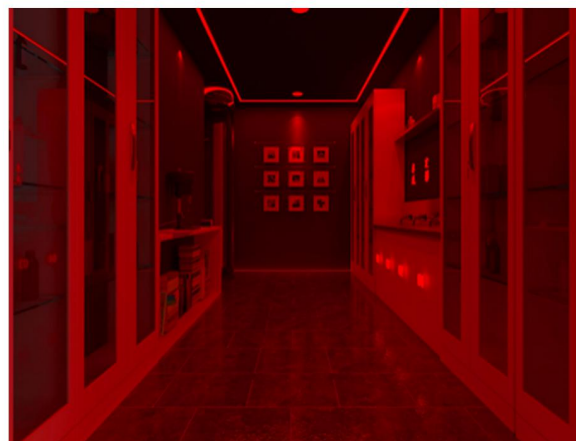
Old Chinese-made Camera Museum Design Project 2020



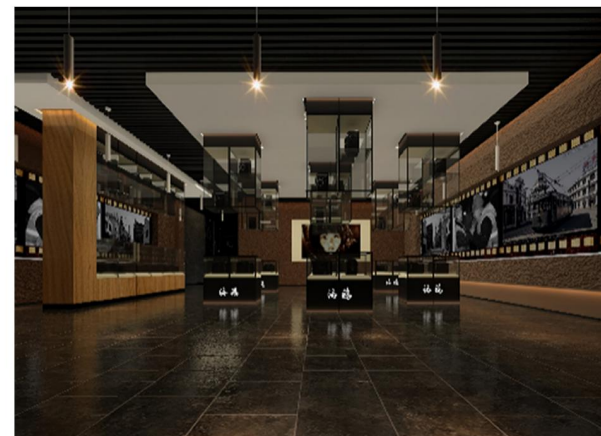
Rendering Perspective



Darkroom passage way



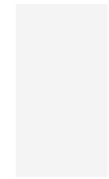
Seagull Camera Exhibition Hall



"Old time experience" hallway



Old Chinese-made Camera Museum Design Project 2020



Rendering Perspective



Production Line exhibition



Old Chinese-made Camera Museum Design Project 2020

Rendering Perspective



Photography exhibition hall



Shanghai Old Street Hallway

Old Chinese-made Camera Museum Design Project 2020

Thank you for reviewing

Qiang Gu

TEL: 18660577928

Email: 877277771@qq.com

Address: Taiwan village 27-1-4, Laishan District, Yantai City, Shandong Province, P. R. China 264001

