



Wang Jie, DLA Portfolio
Supervisor: Dr. Gabriella Medvegy
Associate Professor, Dean





EDUCATION

Bachelor Degree on Furniture Design

SEP 2003 - JULY 2007 Nanjing Forestry University, China.

Master Degree on Artistic Design

SEP 2007 - JULY 2010 Nanjing Forestry University, China.

DLA Studies

SEP 2015 - JUNE 2018 Breuer Marcell Doctoral School of Architecture, Faculty of Engineering and Information Technology, University of Pecs.

PROFESSIONAL EXPERIENCE

SEP 2010 - NOW

Engaged in teaching and research in College of Art and Design, Inner Mongolia University of Science and Technology (IMUST)

- The main research areas include furniture design and interior design;
- Participate in a research project of educational reform in 2011: Construction and Practice of Landscape Design Course in IMUST
- Participate in the research of IMUST in 2014: Decoration design for commercial multiple-use building – themed hotel design;
- Be involved in writing the 12th five-year plan textbook, *Principles of Interior Design*, in 2013. ISBN 9787517008682
- Participate in a research project of interior design in 2014: Commercial Building's interior design
- Participate In China University Uion “Four-Four” Workshop in 2015

WANG JIE



ABOUT ME

Date of birth: 22.10.1983,
Hohhot, China

Nationality: Chinese

Email: 34244119@qq.com



SKILLS

Microsoft Word
Microsoft PowerPoint
Auto CAD
Autodesk 3D Max
Photoshop
In Design



INTEREST



PUBLICATIONS

1. Aug. 2016

Applied Expansive Research on Tendon-and-Mortise Structure in Modern Furniture Design, Pollack Periodica (ISSN 1788-1994), Vol. 11, No.2, 2016, pp.165-172

2. June 2018

交互建筑的发展与实践探究 —— 感知与回应 (The Exploration on Development and Practice of Interactive Architecture - Perception and Response, Architecture & Culture, ISSN 1672-4909, 2018.5.

3. Feb. 2010

浅谈住宅室内设计中的人性化设计原则 (Research of the Humanized Design Principles in Residential Interior Design), Da Zhong Wen Yi, ISSN 1007-5828, 2010.2, pp.121-122.

4. Sep. 2012

家具设计与符号学浅析 (Furniture Design and Semiotics), Da Zhong Wen Yi, ISSN 1007-5828, 2012.9. pp.94-95.

5. May 2013

室内设计原理 (Teaching Material Book, Textbook, Interior Design Theory, chapter 8, Furniture Design), ISBN 978-7-5170-0868-2, 2013, pp.138-151.

ACHIEVEMENTS & AWARDS

Dec. 2010

Obtained the third prize on teaching competition in College of Architectural & Civil Engineering of IMUST.

Oct. 2012

Carried off the second prize on teaching competition in College of Art and Design of IMUST

Aug. 2012

Be awarded '2012 China design education achievement' by China Designers Association

In 2011

Guided students to attend the Formica 100%Design exhibit design collection competition in which we won one first-place prizes and an honorable mention.

In 2012

- Guided students to obtain 'Shortlisted the prize of excellent design work' in the third GSSP (Jin Xi prize) international design competition;
- Guided students to participate in the Chinese architectural art 'young designer award' and obtain a 'bronze medal';
- Guided students to attend the 6th national design art grand prix - 'creative China' in which we won one first-place prizes, one second-place prizes, seven third-place prizes, thirty four honorable mentions.

Oct. 2016

I participated in the competition "Design for China" that was held by China Artists Association. I submitted two works, the restaurant design won the first prize, and the club design won the second prize. And the winning works were published in a book

CONTENTS

01

KunHe Private Club Design

industrial style interior design



02

KunHe Salon Design

industrial style interior design



03

Restaurant Design

regional style interior design



04

Noodle Restaurant Design

regional style interior design



05

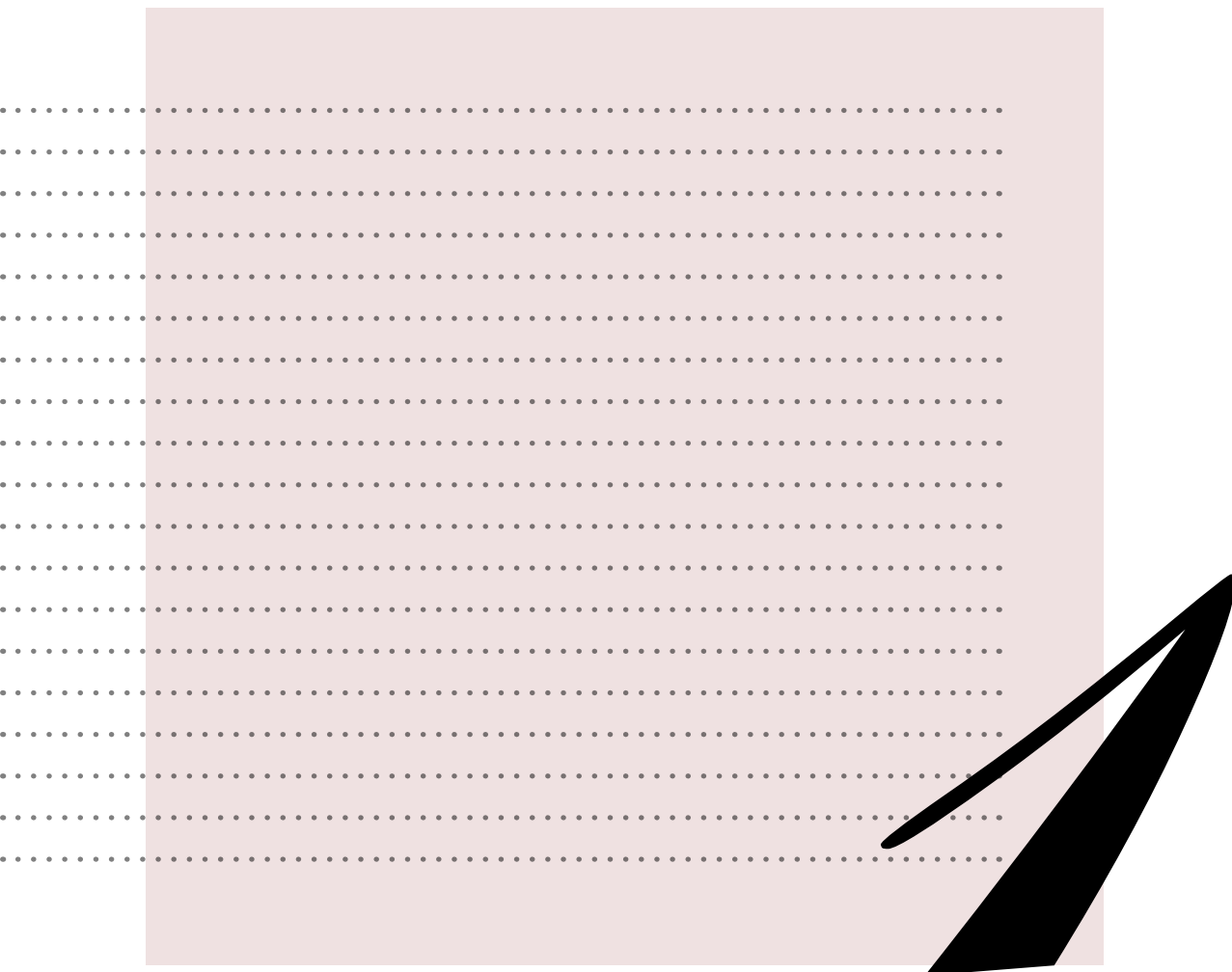
Furniture Design

Traditional Chinese style



06

Awards & Publications



KunHe Private Club Design

December 2015

Project Overview: The KunHe Club is located in Baotou City, Inner Mongolia, near to BaoTou Steel Group & Industrial Park. It is a one-story building, with a usable area of 350 square meters.

Club owners hope to create a high-end private space for business dinner and leisure time. The plan is distribute into the living room, dining room, tea room (office), bedroom, and reconstruct a part of interior area into steel structure sunshine room to form an ecological garden. In the design, in order to better reflect the steel industry features, extract a large number of industrial and steel design symbols , so that the whole space is full of industrial atmosphere.



Inner Mongolia



Bao Tou City



BaoTou Steel Group
& Industrial Park



This club is located in Baotou, Inner
Mongolia, near to Baotou Steel Group
and Industrial Park



Original Site

Design Background——BaoTou Steel Group

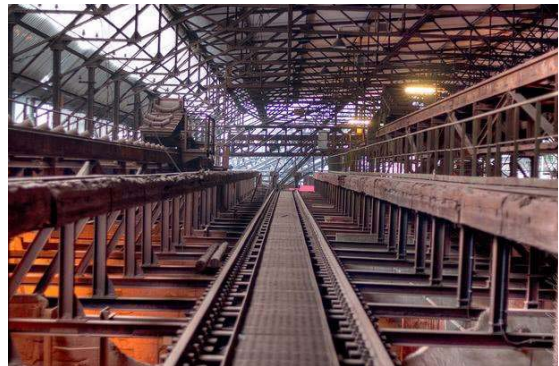
Founded in 1954

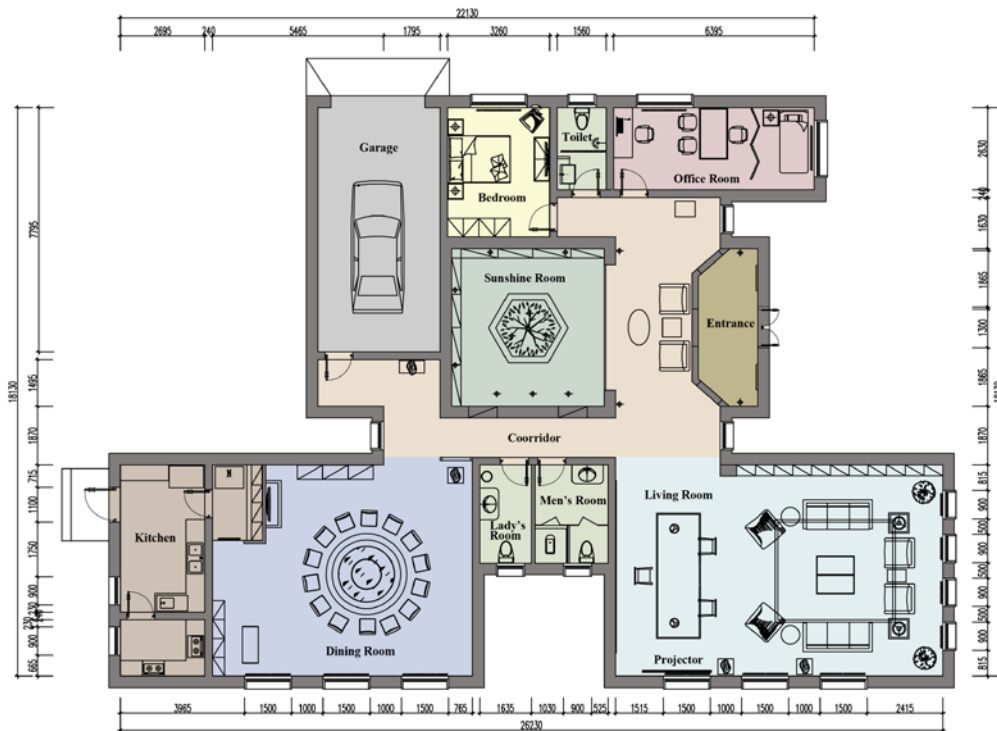
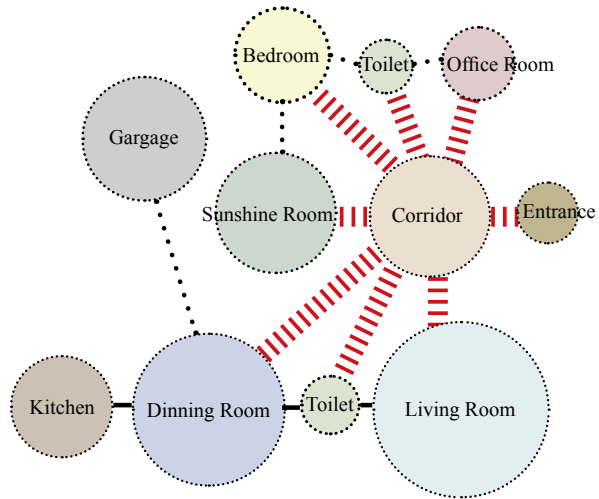


1998



Today





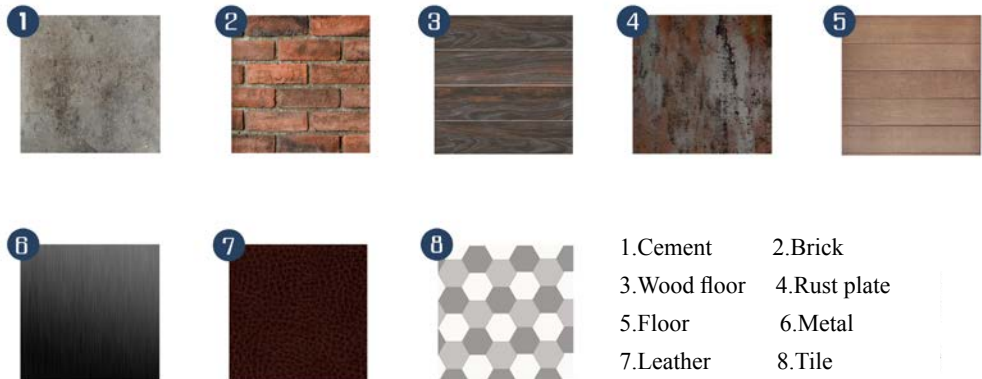
Plan

Design symbols -- metal and industrial symbols

The design concept comes from the memory of the history of Baotou Steel Group. The project site is near to the Baotou Steel factory, common sight in people's vision are blast furnace, railroad track, steel pipe, red brick factory and workshop. So in the design, I extract metal pipe, iron plate, bolt, elbow, rust iron plate, valves, etc. as design symbols, combined with the old factory photo, arouse the user's unique memory of the region, and form a unique cultural atmosphere and industrial style.



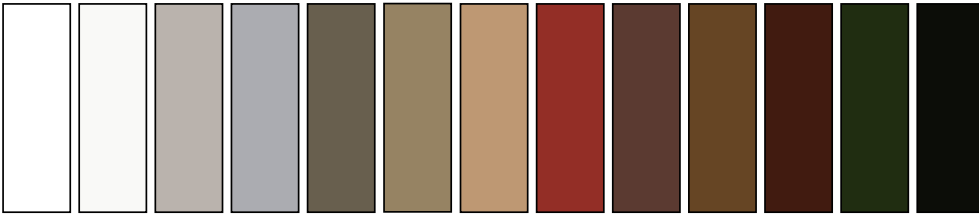
Analysis of Material Symbols



Color symbol in industrial style

Although the interior design of industrial style is simple in material and color selection, it is necessary to give full consideration to the user's personality and hobby in the choice of colors to meet the needs of different groups of people. The design of industrial style does not make the interior space into a factory, reasonable color matching is the key to "warm" the industrial style.

The first impression that industrial interior style brings to most people is the appearance of cold because of the deep, neutral interior color. It is undeniable that many of industrial style of interior decoration indeed use the low tones colors to highlight the industry features, brown, ocher, dark blue are calm colors commonly used.







Construction Phase

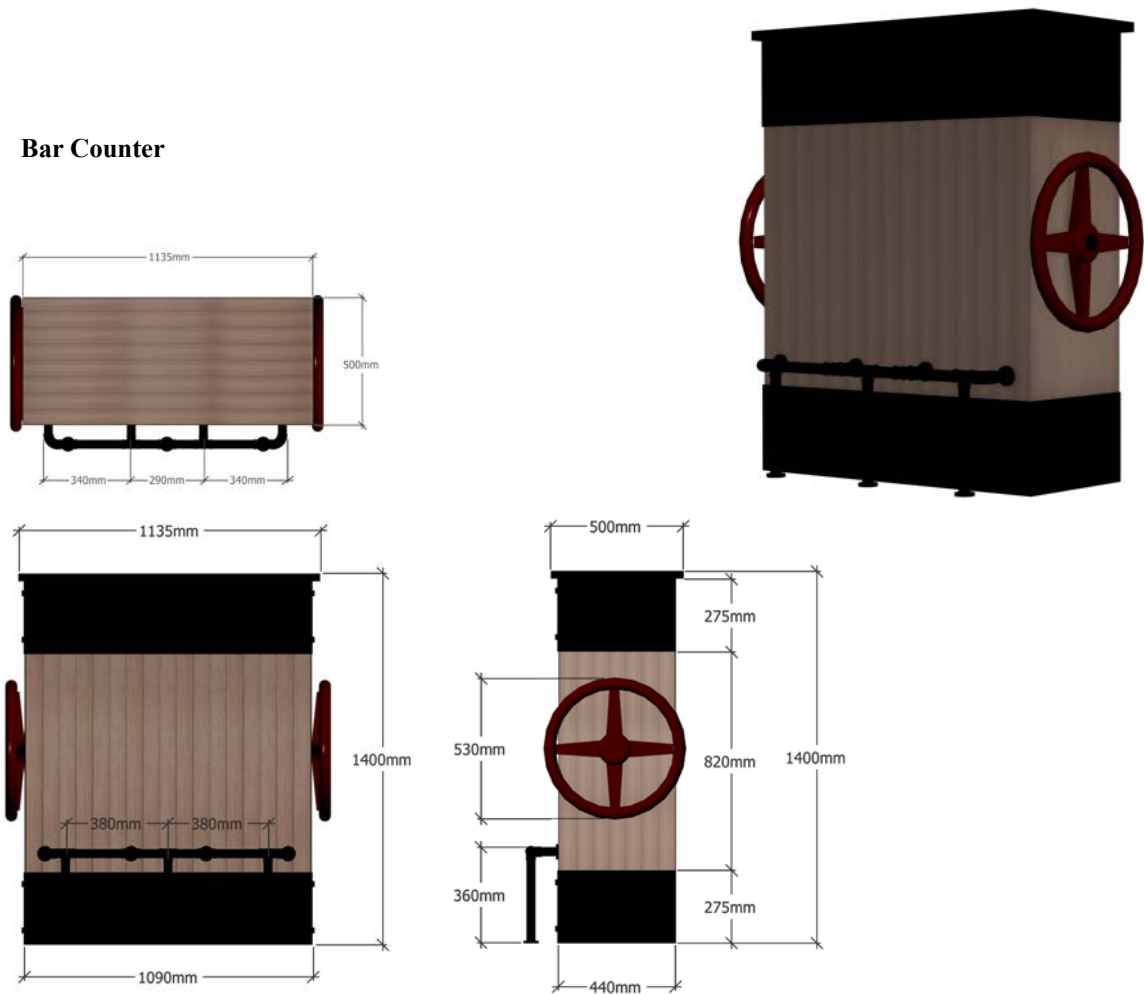
The usage of rusty steel panels on the door frame to show the history of precipitation and industrial civilization memory, its artistic value was re-interpreted.



Metal custom-made furniture

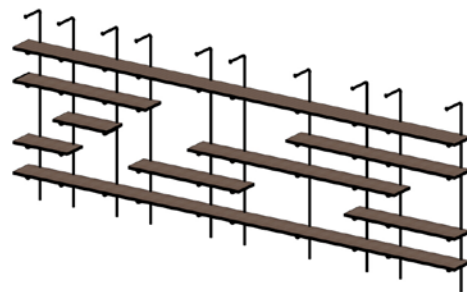
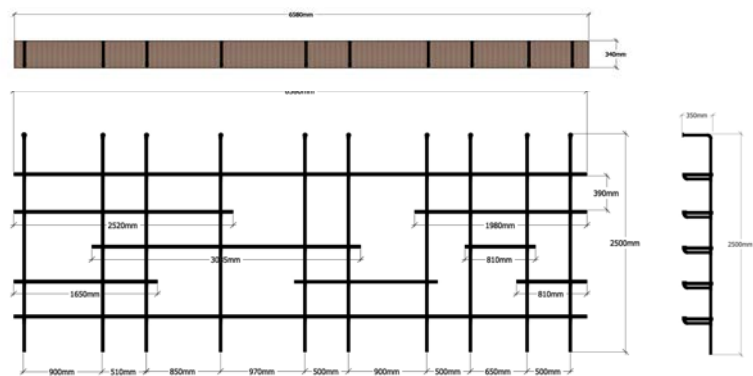
The metal material as the main structure, together with wood, various types of wood-based panels, glass, stone, etc., can be processed into various shapes and styles of metal furniture, that is simple structure, durable and unique furnishings, and with traces of human civilization, is a expression of combination of natural and humanistic. Pure metal in the style is too cold, the method of mixing and matching metal with wood can realize both of the temperature sense and the coarse expansion. For example, many iron-made tables and chairs will use wood as the desktop or chair surface, its role is to fully reveal the depth and variation of wood, and to complement with cold metal.

Bar Counter

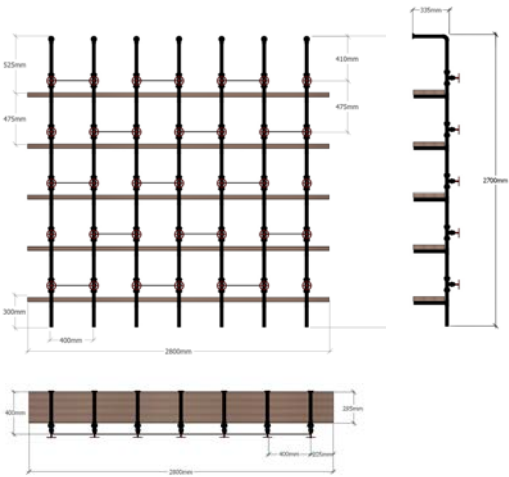




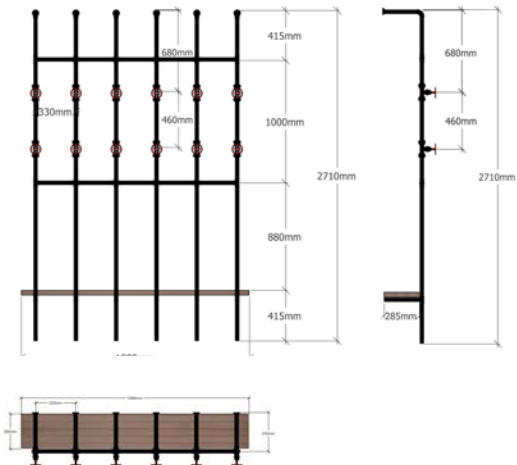
Living Room Shelf



Dining Room Shelf



Clothes Rack



Custom-designed Table

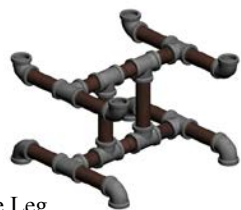
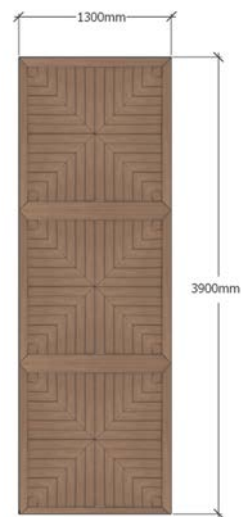


Table Leg



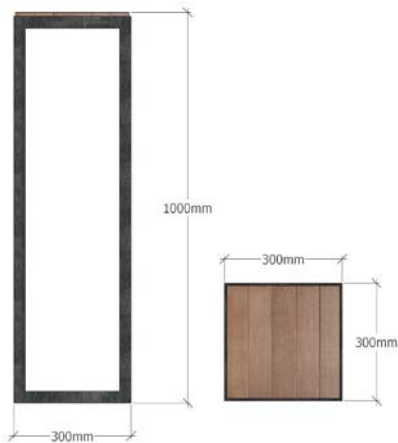
Table Top





This is a big table used in living room, it length is nearly 4m, used wood sticks to form the table top, and some steel components to form the table leg.

Table



Designers use wood with metal to construct a variety of tables and chairs of different sizes and shapes, and these different sizes of tables and chairs, arranged, placed in different indoor spaces, and assume different functions. As the most common industrial design symbol, wood and metal frames, designers use it as a basis for design to create a strong visual perception of industrial style.





Metal Lamps: The industrial-style lamps and lanterns are relatively free and unconstrained in the usage of materials, all the available industrial symbols can be easily processed into lamps and lanterns, nostalgic industrial-style lamps are used by a combination of different industrial symbols. The lamps with obvious industrial features have a metallic texture and distinctive industrial manufacturing features. The metal skeletons and double joint lamps greatly reflect the characteristics of industrial style.

Metal ornaments





The emergence of new industrial style is related to the industrial buildings, most of the industrial style interior space is transformed from the abandoned plant, so the original space was retained, and as a new industrial-style symbols of interior design. Industrial style design just make basic necessary changes and simple foundation decoration based on the original building, it's not only shorten the construction period, save costs, but also to maximize avoid the secondary pollution of interior space caused by excessive decoration materials, followed by access to economic and environmental design results. In the later furniture purchase and decorative furnishings and other details, mainly with metal products, attributed to its beautiful and durable special properties.

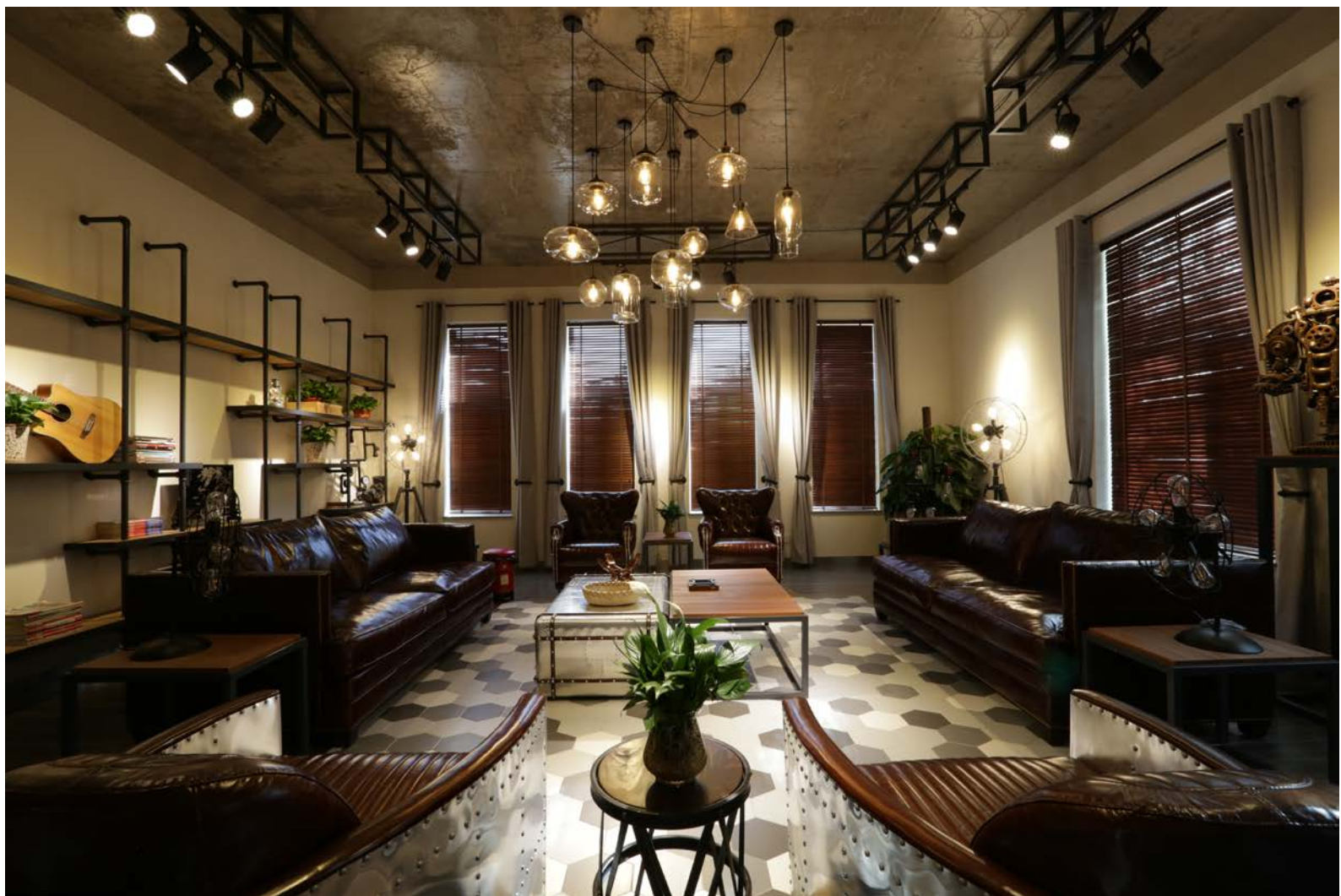
At the entrance, designers implanted a locomotive left in the old industrial era, showing strong industrial characteristics, so that users can once again exposure to burning years.





LIVING ROOM

Cement is an important design symbol that reflects the industrial style. In this design, there is no special treatment on the ceiling, allow the real material to exert its original intrinsic beauty and create a rich industrial style; and using the metal frame lights on the original cement ceiling to create the overall industrial atmosphere.





LIVING ROOM

Interior design is inseparable from the rational use of furniture and lamps, furniture and lamps in addition to meet their basic functions, but also has the decorative artistic features. In the design of furniture, lamps and lanterns into the industrial style features, can be more strongly demonstrated the characteristics of space industry theme.

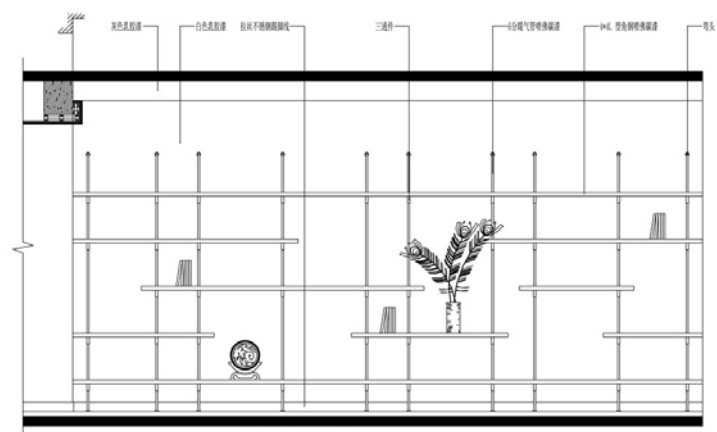




In the industrial style space can be some appropriate softening treatment, such as in the middle of the tough imitation wood flooring, laying a black and white and gray colored tiles, through this "soft" design can adjust and make it more eye-catching



The original space with historical and cultural symbols, such as: slogans, old photos, etc. can be completely preserved as furnishings and accessories directly used to express the atmosphere and theme of the space.



Shelf Elevation 1:10



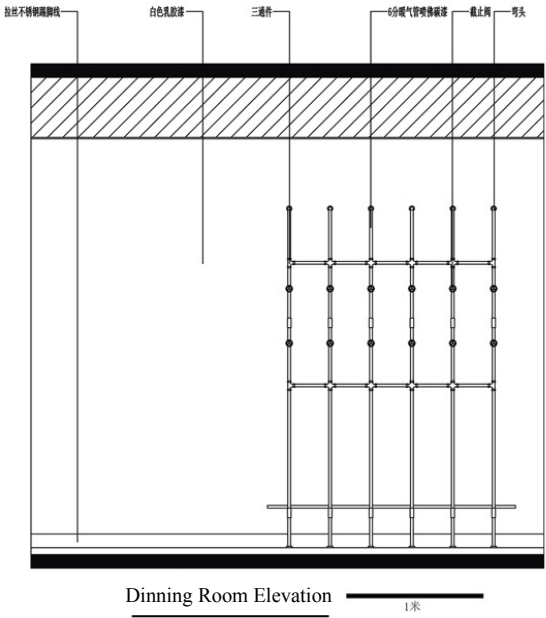
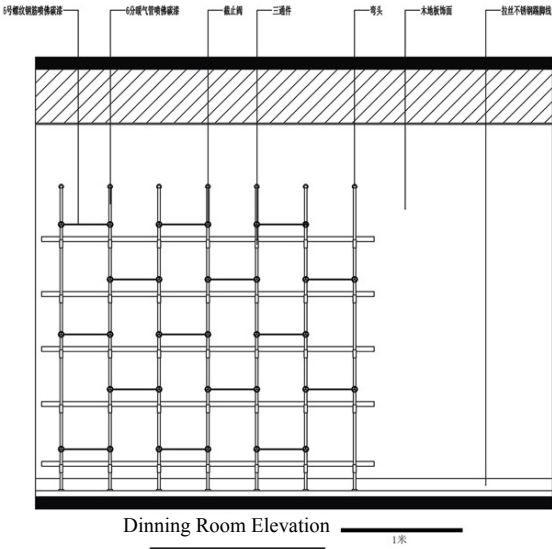


Dining table and dining chair is a combination of leather and wood, use lots of metal pushpin in details.

DINING ROOM

The design form adopts the combination of the industrial symbols, points, lines and plates to form the conceptual composition of the plane structure and the three-dimensional structure, and the relationship between the movement and the area is divided and the function is used. The industrial design method is cleverly embodied on the furniture design and decorations, so that space is more interesting effects, and simple materials become vivid and stylish.

In the walls, roofs, floors, etc. are the use of industrial style material, with the lamps on the industrial design theory will be integrated into the design of lighting, the use of metal and glass and other materials oblique oblique shape on display industrial colors, reproduce Large-scale industrial era of mass production, repeated manufacturing features, making the entire interior space of industrial-style visual effects to further enhance.









The sunshine room with steel structure add a touch of green in the entire industrial space, it's a unique ecological garden, is the combination of industry and ecological innovation.

Lay the red brick neatly on the entire wall and combine with the actual function of the sunshine room to well match with the lamps, metal flower stands and green plants to show the natural warm and nostalgic retro atmosphere naturally .

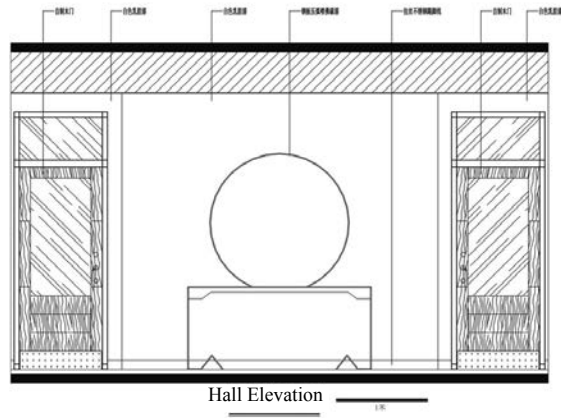
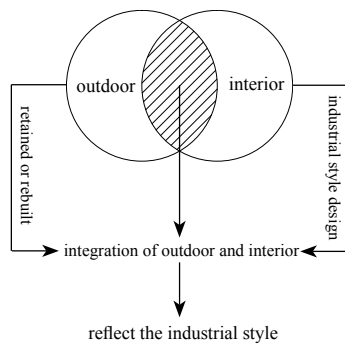
SUNSHINE ROOM

In the sunshine room, it ensures the greenness of the four seasons, taking into consideration both practicality (vegetables, fruits) and ornamental quality (flowers and trees). In order to reduce the cold feeling of steel, designers use a large number green plants and lights. Green plants, the integration of warm white light and various ornaments to enrich the design symbols of the space, but also to soften the steel frame, wall and other industrial style symbols caused by the overall space dull and depressed feeling, increased the flexibility of space.





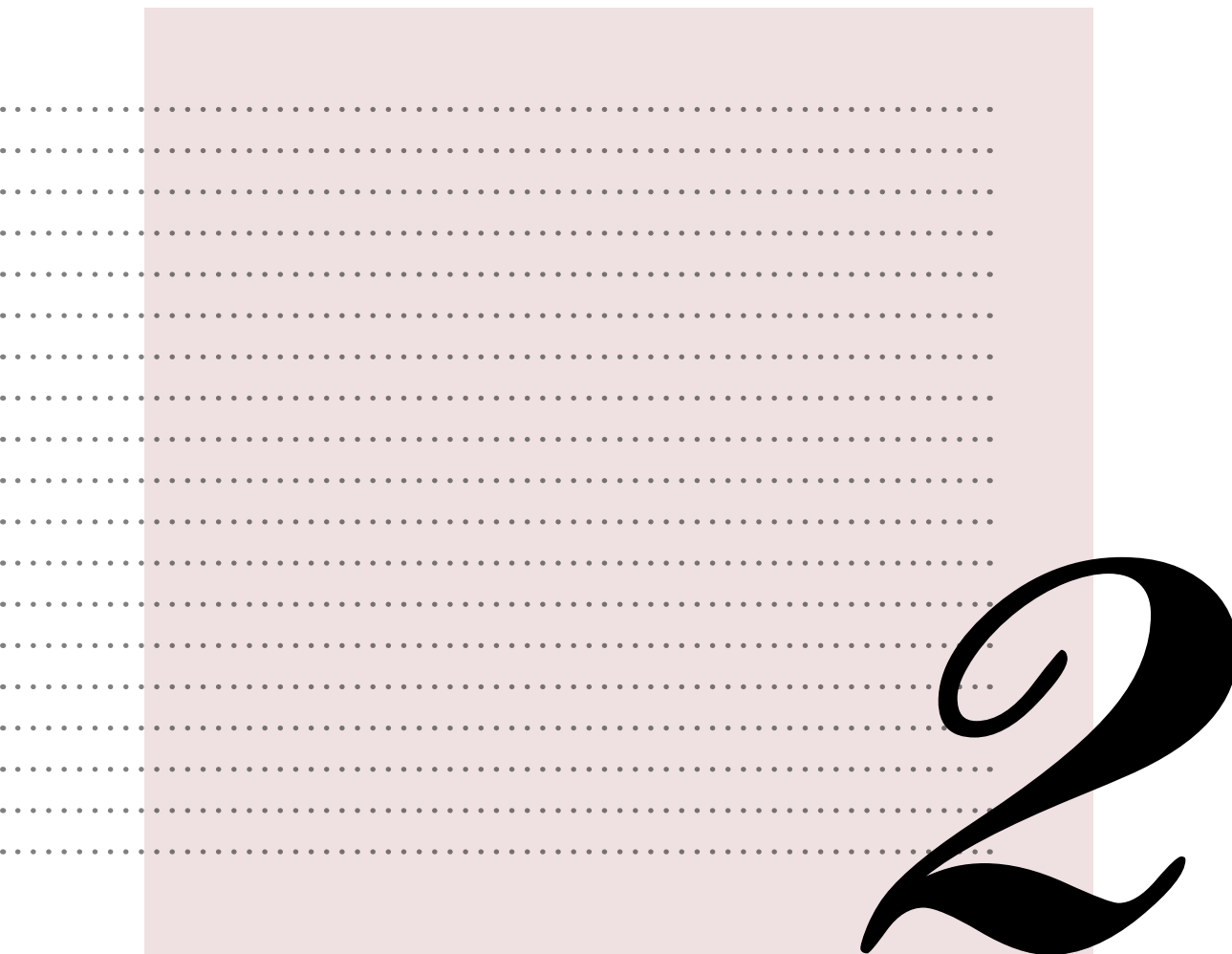
Outdoor space design can be seen as an extension and re-creation of the interior environment , according to the functional properties of buildings, and design requirements, re-design the outdoor space, on the basis of fully preserve in the outdoor environment of the original, to coordinate the outdoor and indoor space, to show the overall space of the industrial culture.





Combination of old wood and steel modeling, people have new and old collision association and recall, this industrial material deduced by modern means of space, but also can be said turning waste into treasure, people have intriguing art Effect, enhance the sense of experience, so that the experience of memory, unforgettable.





KunHe Salon Design

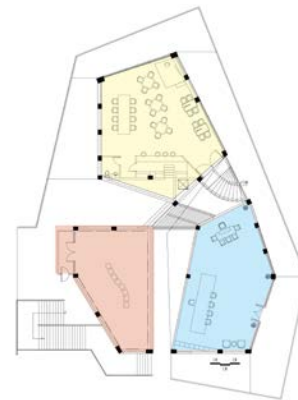
August 2016

KunHe Salon, the site is very near from ahead project, we want to continue a series of design with before one, so I applied much similar design characters to this project. it's usable area of 700 square meters and divided into exhibition area, art studio, office, two- storeys' restaurant.

The highlight of the design is the interlayer, because of the Storey Height is 4.4m, it's very high, so I add this interlayer, and it served as a private dining room for customer



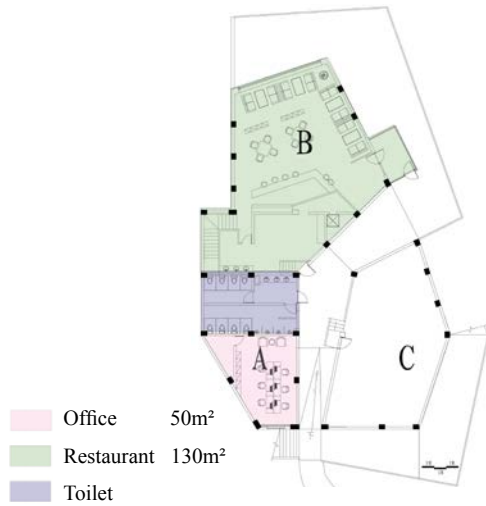
The First Floor Plan



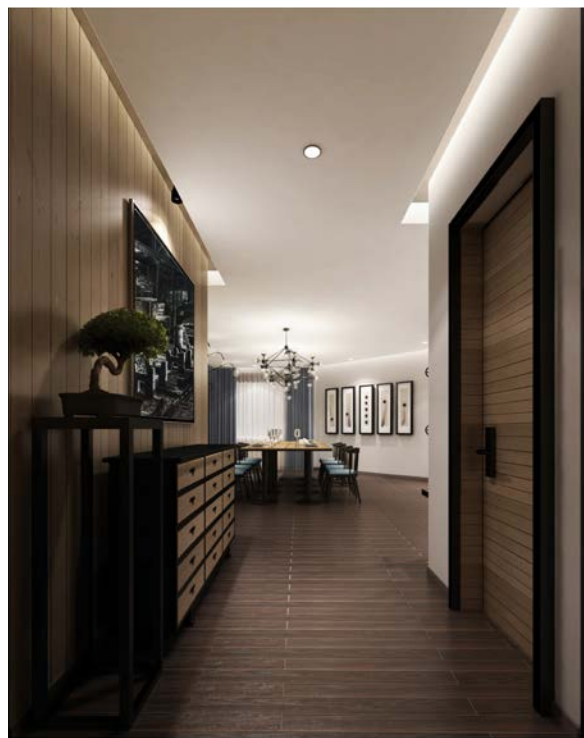
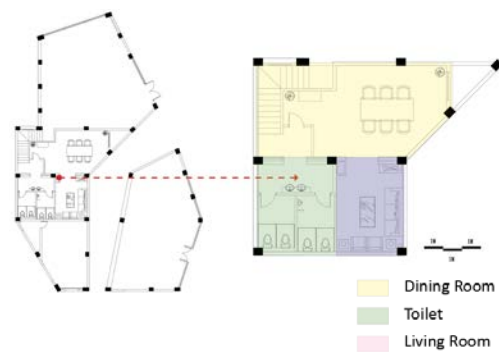
Exhibition Area	80m ²
Restaurant	130m ²
Art Studio	115m ²



The Underground Floor Plan



The interlayer is totally a private space for some special customers, it's usable area is 95m², the storey height is 4.4m. there are entrance, dining room, living room and toilet.



Main Materials



wooden floor



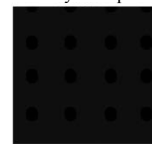
rusty steel plate



cobblestone



wooden floor



black steel plate



cement



wooden floor



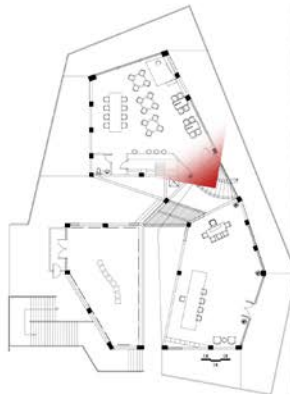
glass



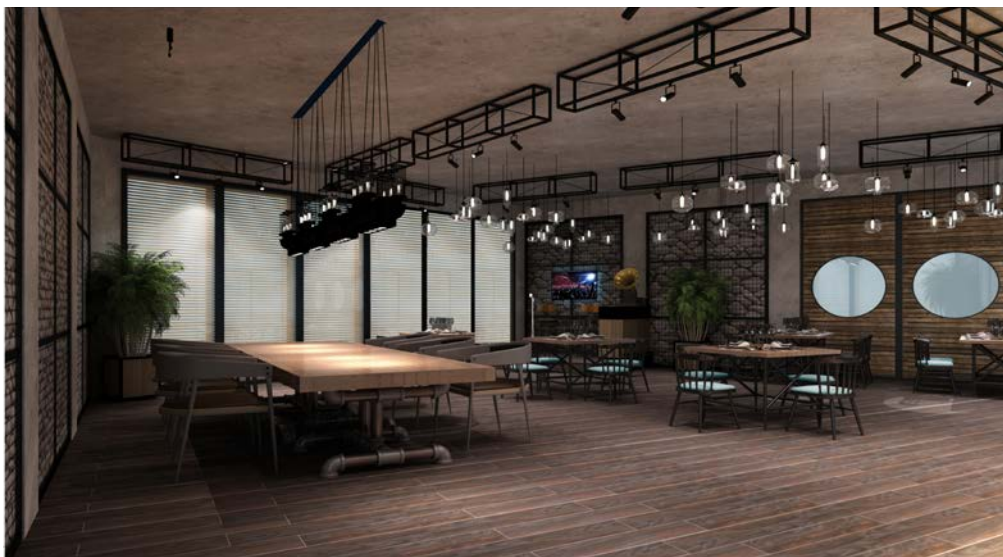
tile



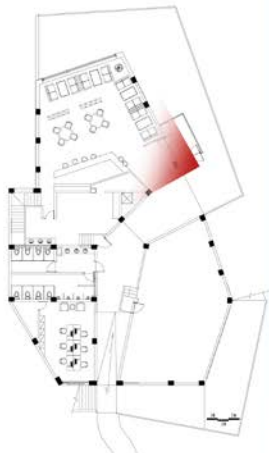
The First Floor Restaurant



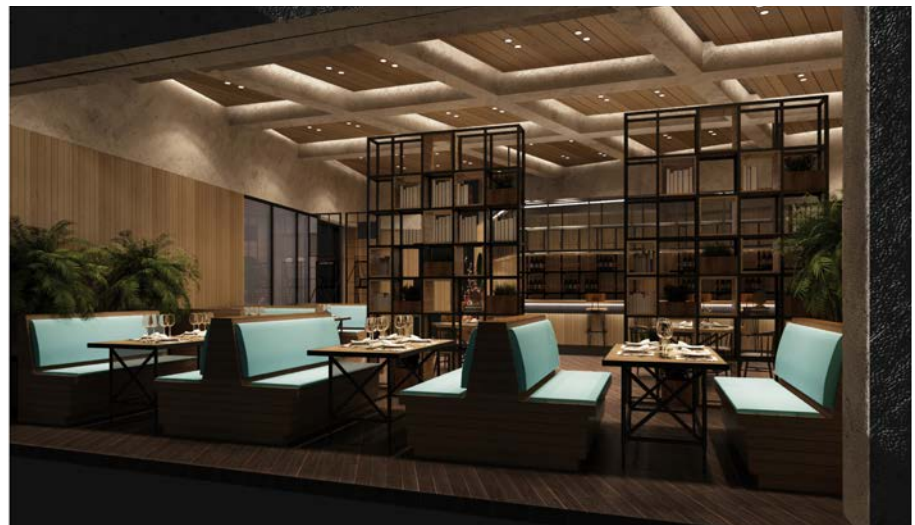
Some part of the wall, embedded the pebble into it, then fixed them with steel net from the surface.



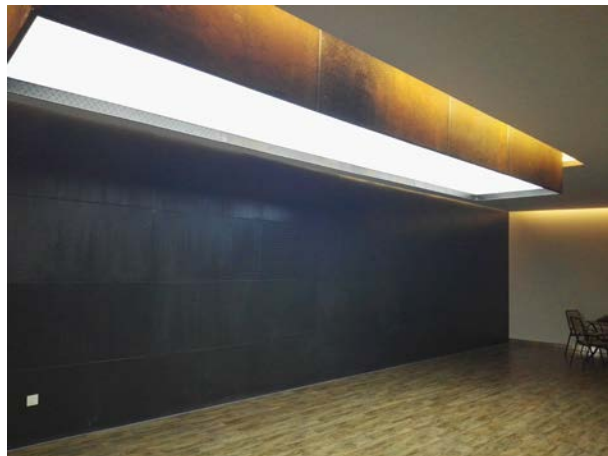
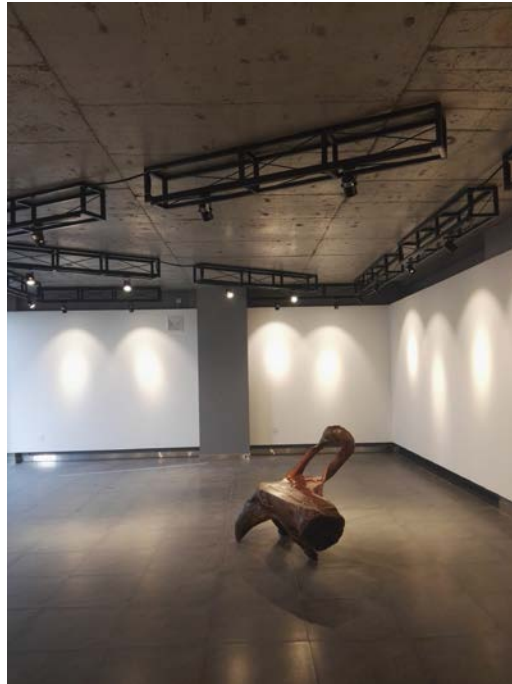
The Underground Floor Restaurant



Usage of the steel frame structures to form partition, shelves and the light on the top of bar counter.



Construction Phase







Restaurant Design

October 2016

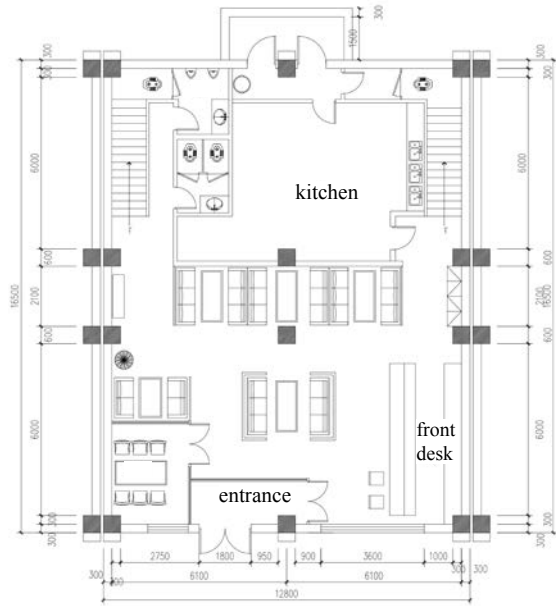
It is a two-storeys building, with a usable area of 400 square meters.

It's located the suburbs, back in the days, the common scene of here is large wheat field, red willow and red brick house, so in this design, I extracted some very local and typical materials as design character, such as wheat shell, red brick, the branch of red willow, old pictures, to recall the resident's memory and form special local design symbol.





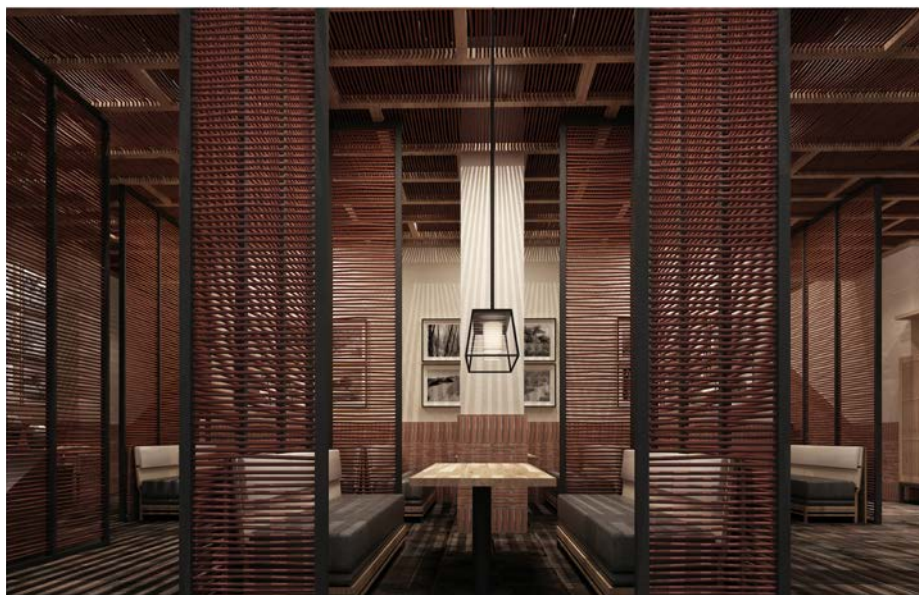
These are the facade effect pictures in the day and night

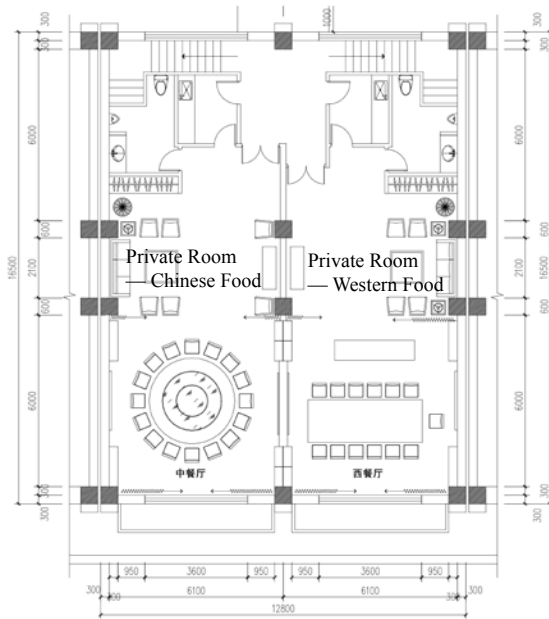


The First Floor Plan



This is the entrance area, used the branch of red willow in the ceiling and partition, the front desk is made of red brick.

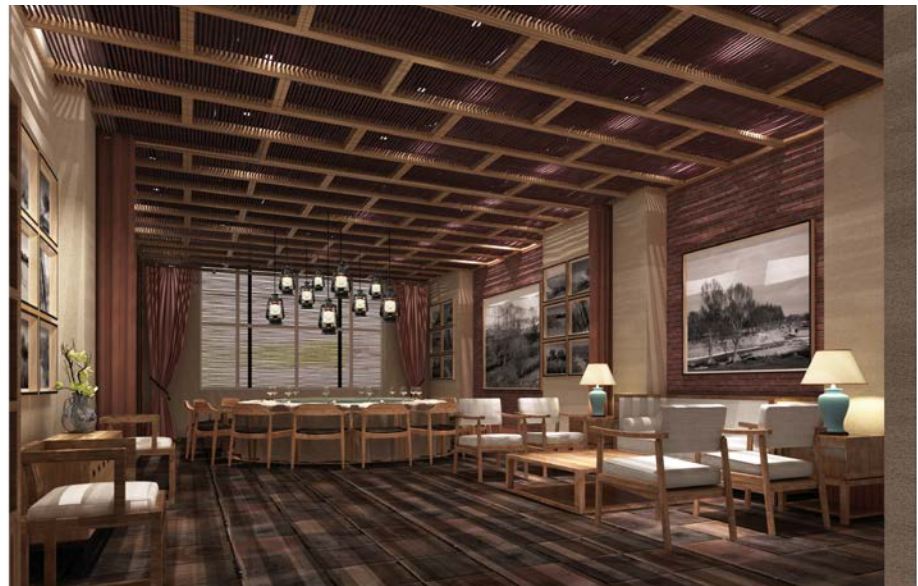




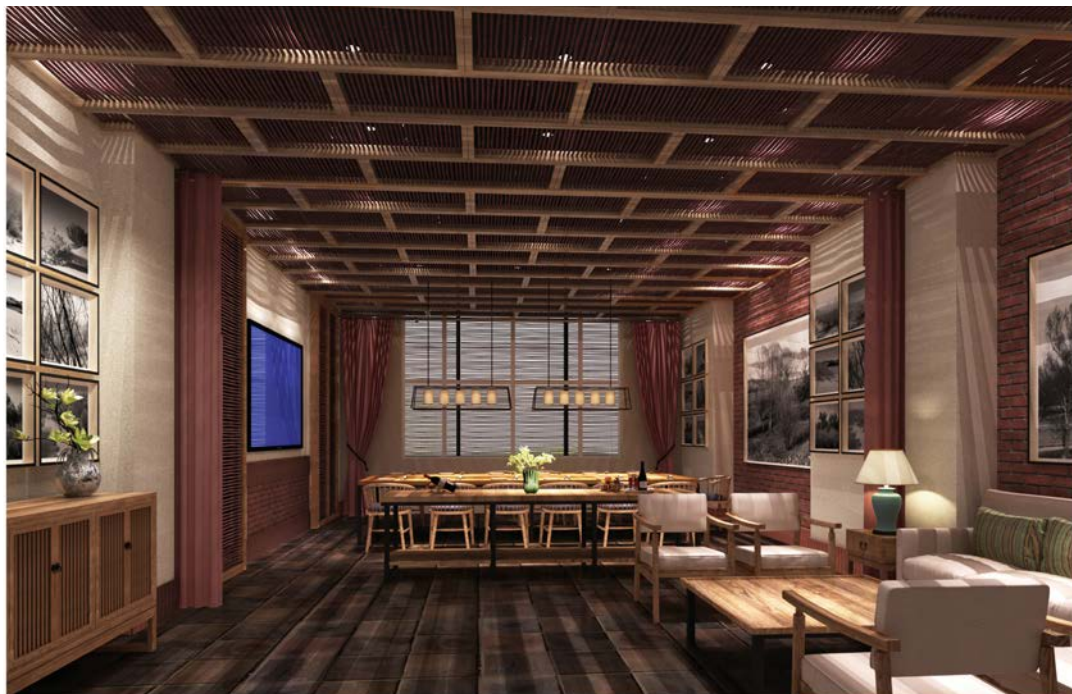
The Second Floor Plan

The private dining rooms are separated into Chinese food and western-style food, place a round table and rectangular table respectively.

Private Room — Chinese Food
Round Table



Private Room — Western Style Food
Rectangular Table





In the corridor we could see the awesome shadows form from the branch ceiling and partition.



中餐餐椅



西餐餐椅



休闲单椅



西餐玄关柜



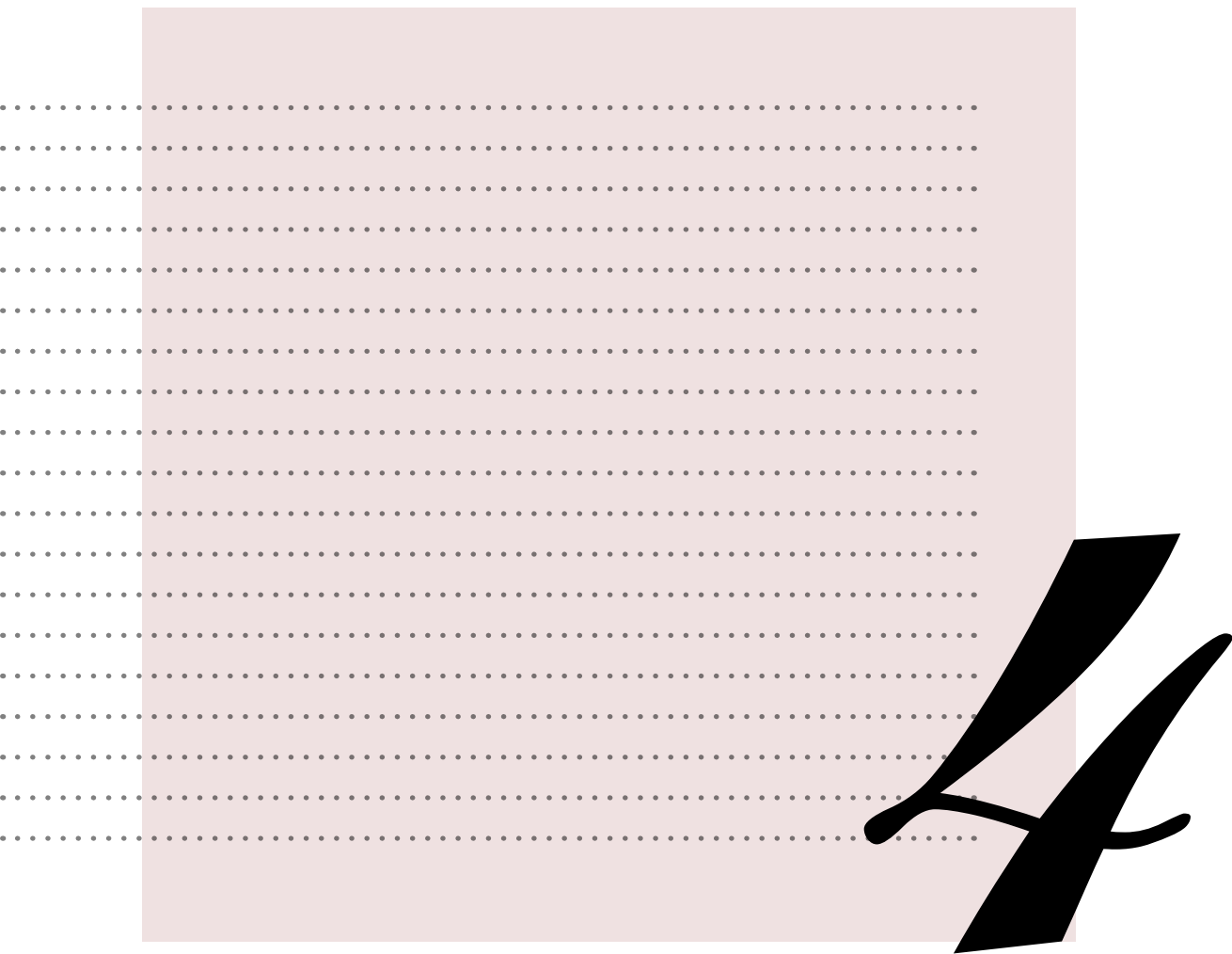
西餐边几



中餐休闲椅



These are the furniture would be used in this design



Noodle Restaurant Design

March 2017

It's a small two-storey building, with a totally usable area of 150 square meters.

In this project, I extracted some very typical and traditional symbols of the northern part of china, such as the special window form, furniture, tool of making noodles and several kinds of cereals in the bottles, applied them as design characters, they are marvelous symbolization of this region.

Design symbols

Chinese dwell in the northern part of china, process of making noodles, and wheat field. These are very typical living scene in northern china, so I want to recall customer's memory.



design symbols in northern residence



design symbols in regional daily life



design symbols in regional wheat



This is the facade, we designed the logo, the circle looks like a bowl, and the curve looks like the noodles or steam. We applied the wheat pattern, for the noodle is made of wheat.



This is a traditional northern noodle restaurant, folk noodle has been popular with the people in northern China for hundreds years. According to legend, this kind of noodle was popular during the reign of Emperor Kangxi of the Qing Dynasty, it's delicious and low price, it's the most common diet in northern China, and requires a specialized noodle making tool.



Original Site



Construction Phase --
this is a reconstruction project

Furnishings symbols

The old tiles, old iron lamps, noodles tools, bottles, old scenes pictures, tables and chairs are closely linked to history and customs, reflecting the regional symbols and folk culture

Square stool: modeling simple, rough and powerful, generally furnished in the bedroom bedside, can also be placed next too the table, as a seat or place clothing, sometimes due to the need to move to the yard, it has simple structure, flexible and convenient, small footprint, four sides sitting, and can also be stacked and spliced into other shapes. This reflects simplicity and flexibility of folk life.



Square stool



noodles tools



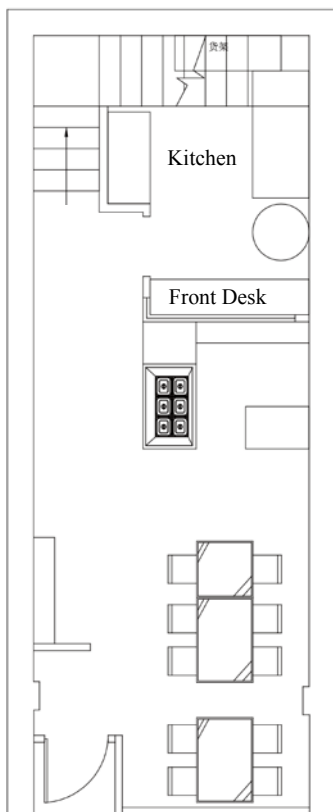
bottles



furniture



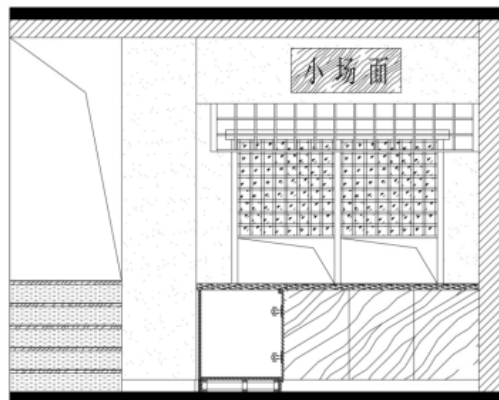
iron lamp



The First Floor Plan

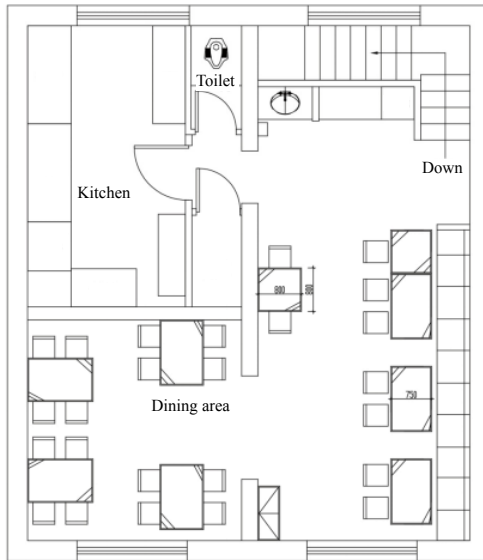
Front Desk

This is The First Floor, this part is unclosed kitchen and front desk, customers could see the process of making noodles. This is a very special ornaments, because it also a tool for making noodles that be used in the past.

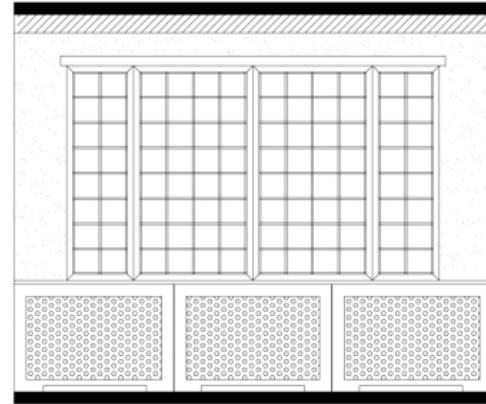


This is a very special ornaments,
because it also a tool for making
noodles that be used in the past.





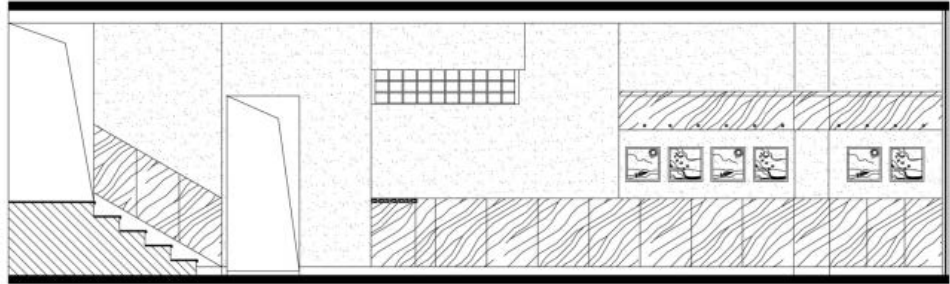
The Second Floor Plan



This is The Second Floor, I extracted some very typical and traditional symbols of the northern part of china, such as the special window form, furniture and several kinds of cereals in the bottles, applied them as design characters, they are marvelous symbolization of this region.



choose the same color finished paint-free board, as wainscot and coat rack, both in harmony with the interior space, but also play a role in protecting the wall and easy to clean.

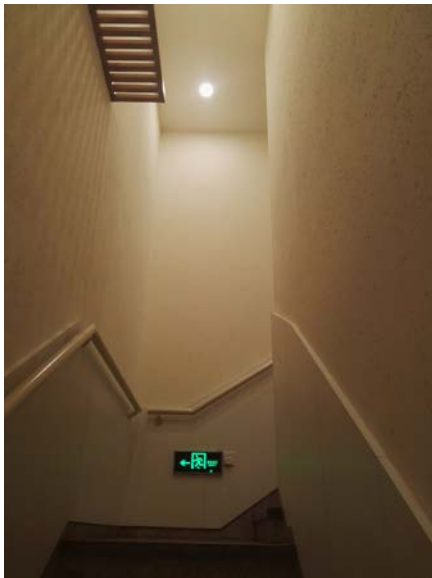


Hall Elevation





Table with drawer, which can put in chopsticks, cups, bowls



staircase



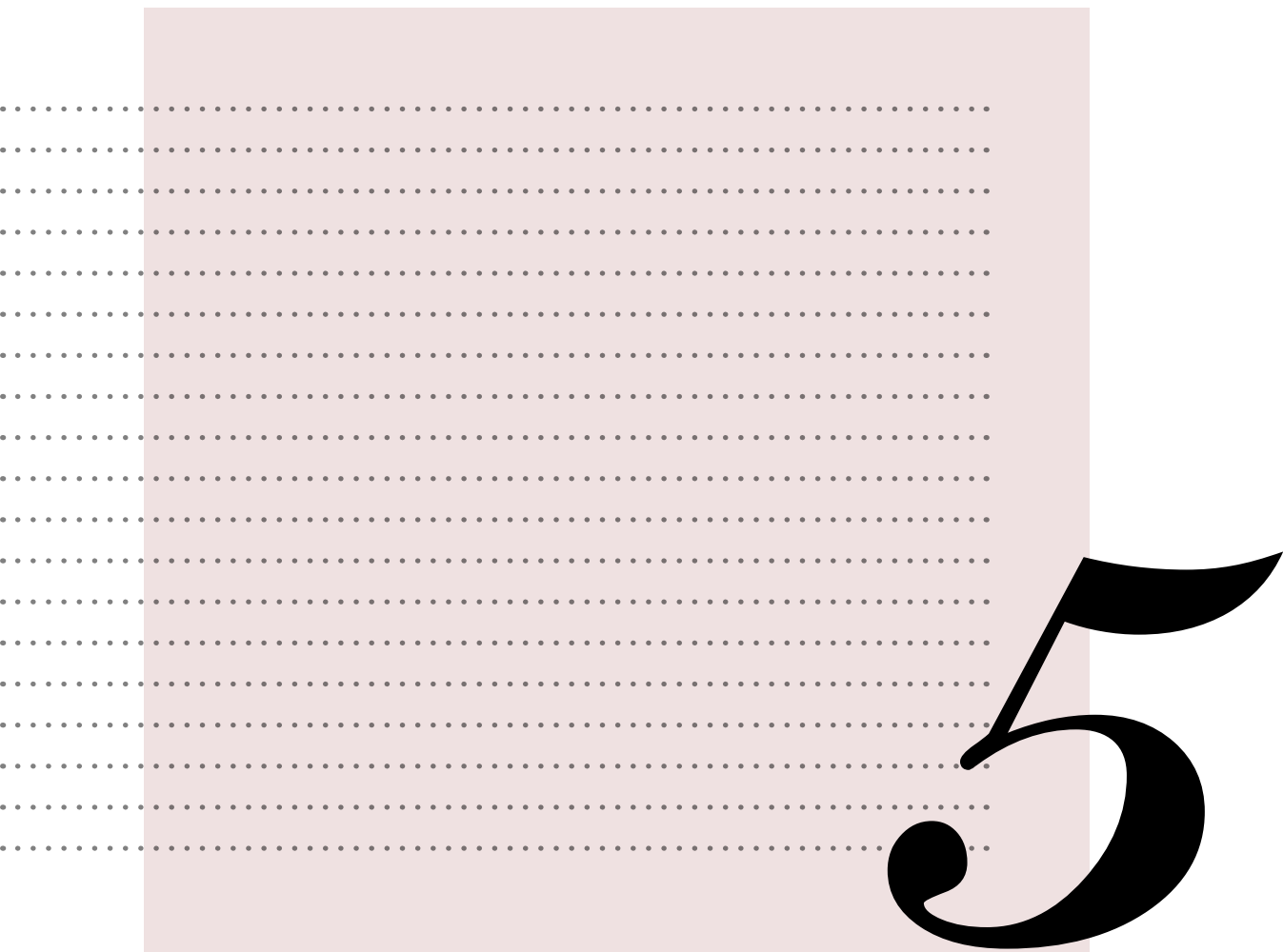


The symbols of northern style residence were used for windows, doors and partition wall decoration, strengthen the regional characteristics

The color is dominated by beige, emphasizing the character of wheat, at the same time embodies the clean characteristics of modern environment and meet people's psychological needs of the health environment.

Use wheat shells and putty powder to do wall and ceiling surface decoration. Not only reflect the traditional residence features of the wall, but also highlight the content that noodle made from wheat





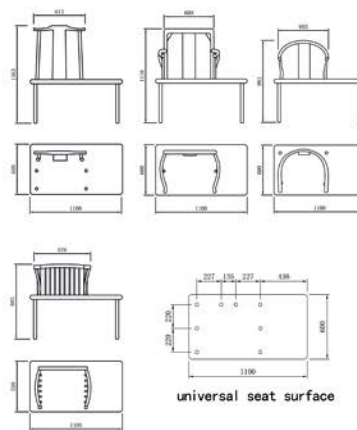
Traditional Chinese Furniture Design Ming Chair

December 2015

This design was named Ming Chair. The seat has the most typical symbols of the Ming-style furniture, the design of the chair back extract symbols from traditional Ming style furniture and simplify it. The highlight of the design is to design a universal seat surface that can connected with the chair back through the unified wood joints, and the scale of the seat surface is a little larger than common, so that the seat can become lounge chair, the sideward space can be used to put something, or when you reading you can put a beloved book and a cup of coffee on it.



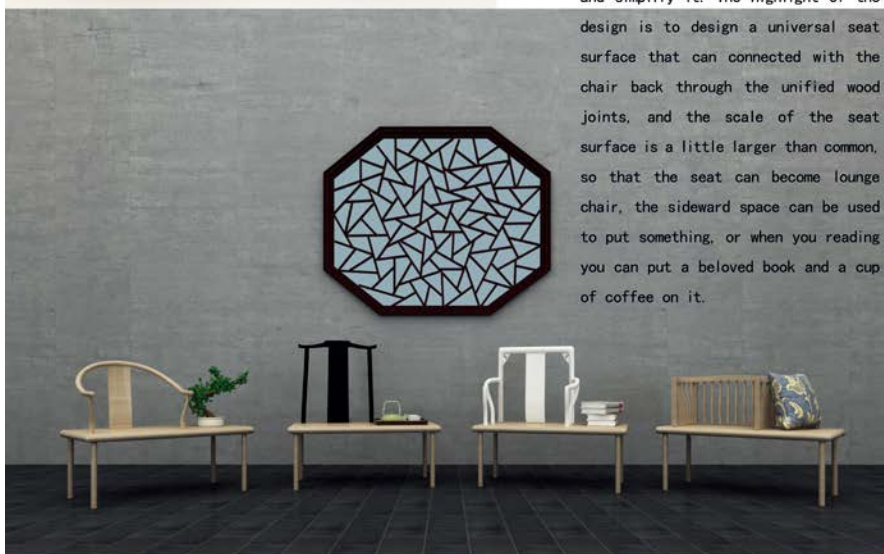
RIM DESIGN AWARD

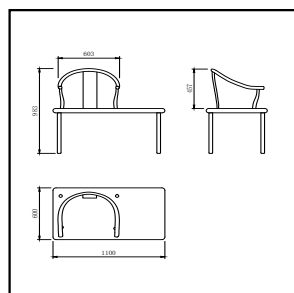
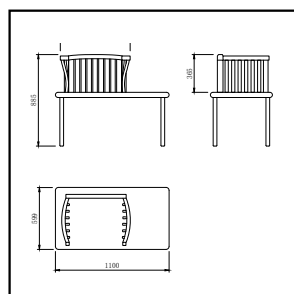
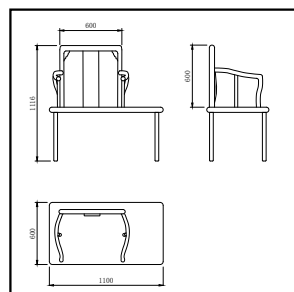
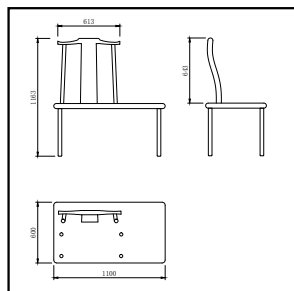


Ming Chair

CONCERT DESCRIPTION

The seat has the most typical elements of the Ming-style furniture, the design of the chair back extract elements from traditional Ming style furniture and simplify it. The highlight of the design is to design a universal seat surface that can connected with the chair back through the unified wood joints, and the scale of the seat surface is a little larger than common, so that the seat can become lounge chair, the sideward space can be used to put something, or when you reading you can put a beloved book and a cup of coffee on it.



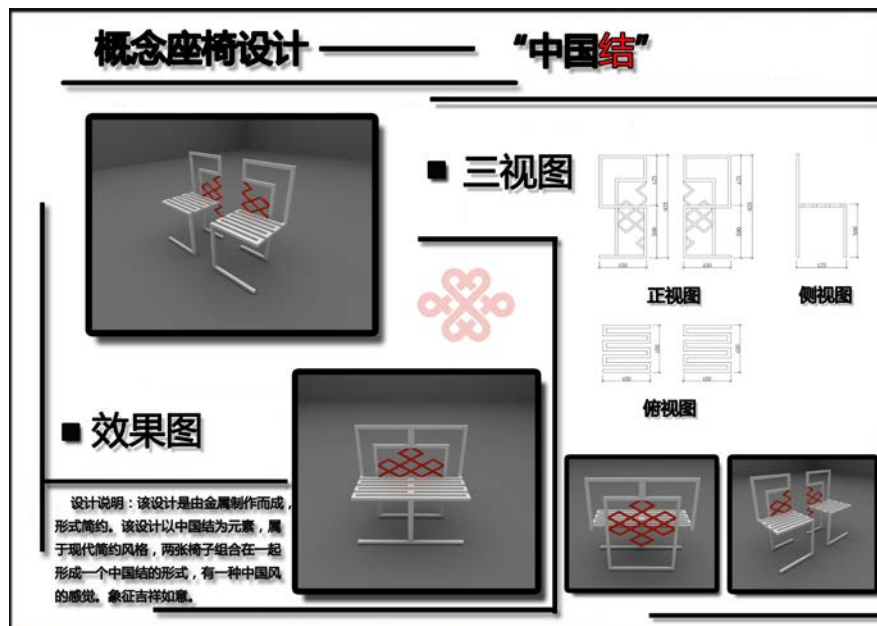




This couch is named "yin-yang". This modern seat cleverly incorporates the traditional Chinese symbol "Tai Chi", a unique combination of fashion and fun, full of personality, and also reflects the mental state of "tai chi", and the unity of dynamic and static.



The whole design does not directly use the traditional symbols, but through the abstract and extraction, just to convey the form of Chinese blue and white porcelain



In this design cleverly applied the traditional auspicious patterns in our country - "Chinese knot", the direct reference of this classic traditional symbols for this modern furniture has brought a rich Chinese style.



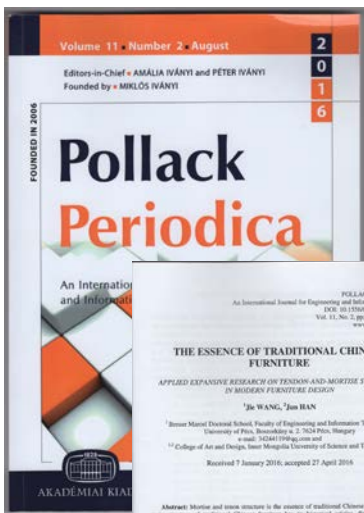


Award

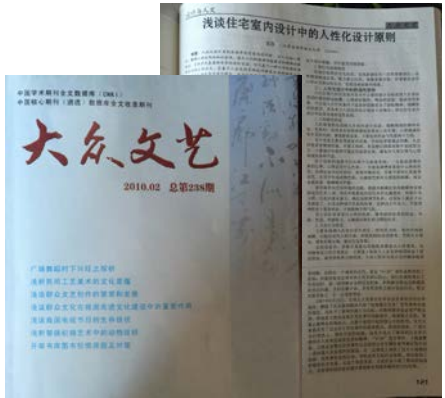
I participated in the competition “Design for China” that was held by China Artists Association in October 2016. I submitted two works, the restaurant design won the first prize, and the club design won the second prize. And the winning works were published in a book



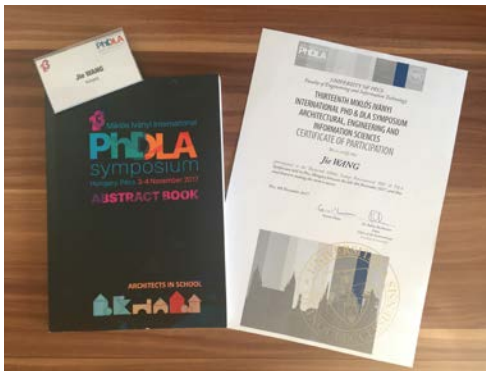
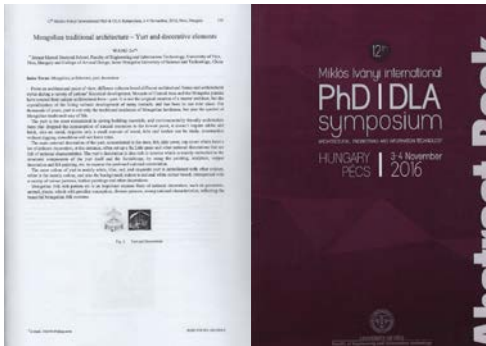
Publications



第1章 绪论	1
1.1 绪论	1
1.2 绪论	1
1.3 绪论	1
1.4 绪论	1
1.5 绪论	1
1.6 绪论	1
1.7 绪论	1
1.8 绪论	1
1.9 绪论	1
1.10 绪论	1
1.11 绪论	1
1.12 绪论	1
1.13 绪论	1
1.14 绪论	1
1.15 绪论	1
1.16 绪论	1
1.17 绪论	1
1.18 绪论	1
1.19 绪论	1
1.20 绪论	1
1.21 绪论	1
1.22 绪论	1
1.23 绪论	1
1.24 绪论	1
1.25 绪论	1
1.26 绪论	1
1.27 绪论	1
1.28 绪论	1
1.29 绪论	1
1.30 绪论	1
1.31 绪论	1
1.32 绪论	1
1.33 绪论	1
1.34 绪论	1
1.35 绪论	1
1.36 绪论	1
1.37 绪论	1
1.38 绪论	1
1.39 绪论	1
1.40 绪论	1
1.41 绪论	1
1.42 绪论	1
1.43 绪论	1
1.44 绪论	1
1.45 绪论	1
1.46 绪论	1
1.47 绪论	1
1.48 绪论	1
1.49 绪论	1
1.50 绪论	1
1.51 绪论	1
1.52 绪论	1
1.53 绪论	1
1.54 绪论	1
1.55 绪论	1
1.56 绪论	1
1.57 绪论	1
1.58 绪论	1
1.59 绪论	1
1.60 绪论	1
1.61 绪论	1
1.62 绪论	1
1.63 绪论	1
1.64 绪论	1
1.65 绪论	1
1.66 绪论	1
1.67 绪论	1
1.68 绪论	1
1.69 绪论	1
1.70 绪论	1
1.71 绪论	1
1.72 绪论	1
1.73 绪论	1
1.74 绪论	1
1.75 绪论	1
1.76 绪论	1
1.77 绪论	1
1.78 绪论	1
1.79 绪论	1
1.80 绪论	1
1.81 绪论	1
1.82 绪论	1
1.83 绪论	1
1.84 绪论	1
1.85 绪论	1
1.86 绪论	1
1.87 绪论	1
1.88 绪论	1
1.89 绪论	1
1.90 绪论	1
1.91 绪论	1
1.92 绪论	1
1.93 绪论	1
1.94 绪论	1
1.95 绪论	1
1.96 绪论	1
1.97 绪论	1
1.98 绪论	1
1.99 绪论	1
1.100 绪论	1



1. Applied Expansive Research on Tendon-and-Mortise Structure in Modern Furniture Design, Pollack Periodica (ISSN 1788-1994), Vol. 11, No.2, 2016, pp.165-172
2. 交互建筑的发展与实践探究 —— 感知与回应 (The Exploration on Development and Practice of Interactive Architecture - Perception and Response, Architecture & Culture, ISSN 1672-4909, 2018.5.
3. 浅谈住宅室内设计中的人性化设计原则 (Research on the Humanized Design Principles in Residential Interior Design), Da Zhong Wen Yi, ISSN 1007-5828, 2010.2, pp.121-122.
4. 家具设计与符号学浅析 (Furniture Design and Semiotics), Da Zhong Wen Yi, ISSN 1007-5828, 2012.9. pp.94-95.
5. 室内设计原理 (Teaching Material Book, Textbook, Interior Design Theory, chapter 8, Furniture Design), ISBN 978-7-5170-0868-2, 2013, pp.138-151.



I participate in the 11th, 12th, 13th Miklós Iványi International PhD & DLA Symposium, made the presentation and the abstract have been published in the Book of Abstracts.

1. Applied expansive research on tendon-and-mortise structure in modern furniture design, Pollack Periodica (ISSN 1788-1994), Vol. 11, No.2, 2016, pp.165-172
2. Mongolian Traditional Architecture--Yurt and Decorative Elements, the 12th Miklós Iványi International PhD & DLA Symposium Abstract Book (ISBN 978-963-429-094-0), 2016, 125.
3. The characteristics of traditional Chinese dwelling, the 13th Miklós Iványi International PhD & DLA Symposium Abstract Book (ISBN 978-963-642-780-1), 2017, 140.

特别感谢

Special thanks to

Gabriella Medvegy

Balint Bachmann
Erzsebet Bachmann
Yuan Bo

悉心指导与帮助

for their guidance and help.



